

REV.	ECN.NO.	DATE
A	RELEASED	11/12-'07
D	Modify Tolerance	07/16-'08
E	Change Notes	02/21-'12

Pin NO.	Power Name	Pin NO.	Power Name
P1	V33	P9	V5
P2	V33	P10	GND
P3	V33	P11	DAS/DSS
P4	GND	P12	GND
P5	GND	P13	V12
P6	GND	P14	V12
P7	V5	P15	V12
P8	V5		

Pin NO.	Signal Name
S1	GND
S2	A+
S3	A-
S4	GND
S5	B-
S6	B+
S7	GND

**NOTES:**

**\*Material**

Housing: LCP+50%G.F, UL 94V-0 rated;  
 Color: Black.  
 Contact: Phosphor Bronze  
 Plating: Au Plating on Contact Ared,  
 Sn (100u" Min.) plating on solder tail,  
 Ni (40u" Min.) underplating overall.  
 Harpoon: Brass  
 Plating: Sn(100u"Min)Plating Over Ni(40u"Min)

**\*Mechanical**

Insertion Force: 45N max.  
 Withdrawal Force: 10N min.  
 Durability: 500 cycles

**\*Electrical Specification**

Current Rating: 1.5 Ampere per contact;  
 Contact Resistance: 30 Milliohms max.  
 Insulation Resistance: 1000 megohms min.  
 Dielectric Withstanding Voltage: 500 V AC.

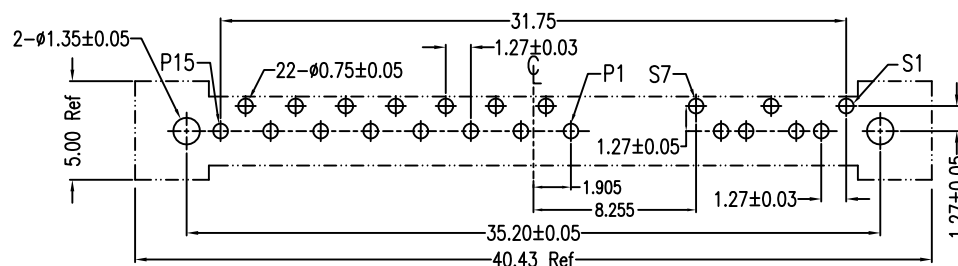
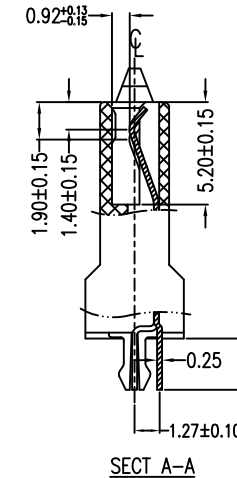
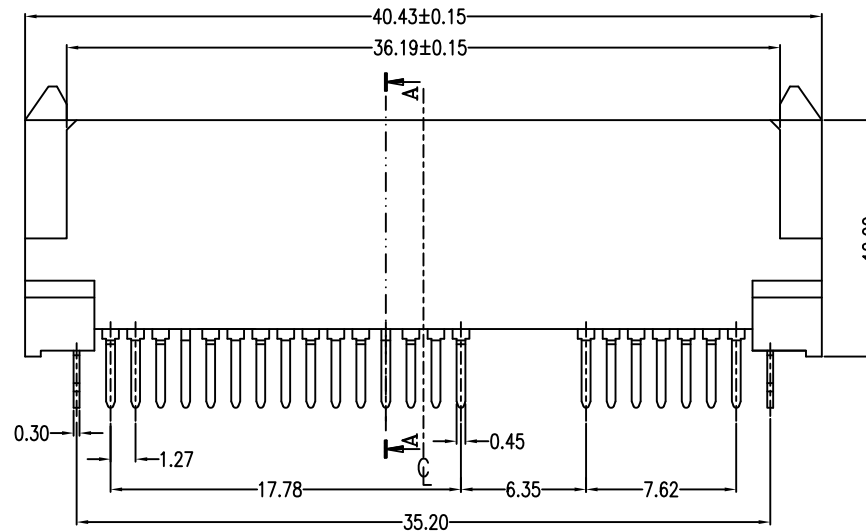
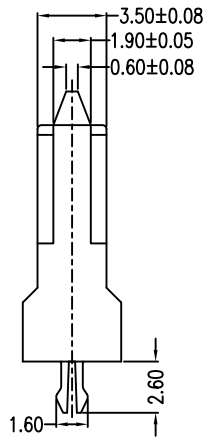
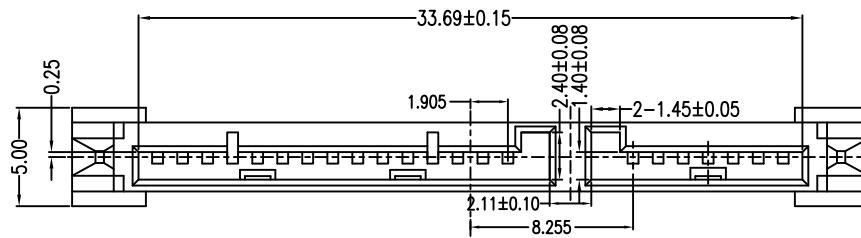
**\*Environmental**

Operating Temperature: -55°C to +85°C

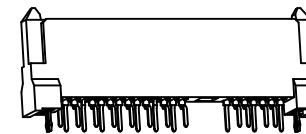
**\*How to order**

2SAT-F22-V5D-H7

Au F:Flash 5:15u"  
 Number of Contacts  
 Series No.



PCB Layout(T=1.6±0.05mm)  
 COMPONENT SIDE



Units	mm Scale	5:2	Drawing By	Date	SINGATRON U.S.A.			
Tolerance Unless Otherwise Specified			May	02/29-'12				
.X	~	±0.38	Reviewed By	Date	Date	02/21-'12	Title	SATA 7+15P Double Row DIP Type(12.0) Female
.XX	~	±0.20	Sharon	03/01-'12	Sheet	1 of 1		
.XXX	~	±0.15	Approval By	Date	Third Angle Projection			
Angle	~	± 3°	Jason	03/01-'12	Drawing No.	2SAT-F22-V5D-H7	REV	E