

REV.	DESCRIPTION	DATE
A	RELEASED	04/10/03
E	Change Dimension	08/30-'12
F	Modify Insertion Force & Withdrawal Force	10/01-'14

Pin NO.	Power Name	Pin NO.	Power Name
P1	V33	P9	V5
P2	V33	P10	GND
P3	V33	P11	DAS/DSS
P4	GND	P12	GND
P5	GND	P13	V12
P6	GND	P14	V12
P7	V5	P15	V12
P8	V5		

Pin NO.	Signal Name
S1	GND
S2	A+
S3	A-
S4	GND
S5	B-
S6	B+
S7	GND

Notes:

*Material

Housing: LCP, UL94 V-0; Color: Black
 Contact: Phosphor Bronze
 Plating: Au Plating On Contact Area,
 Sn(100u" Min.) Plating On Solder Tail,
 Ni(40u" Min.) Underplating Overall.

Harpoon: Brass
 Plating: Sn(100u"Min)Plating Over Ni(50u"Min)

*Mechanical

Insertion Force: 20N Max.
 Withdrawal Force: 4N Min.
 Durability: 500 Cycles

*Electrical Specification

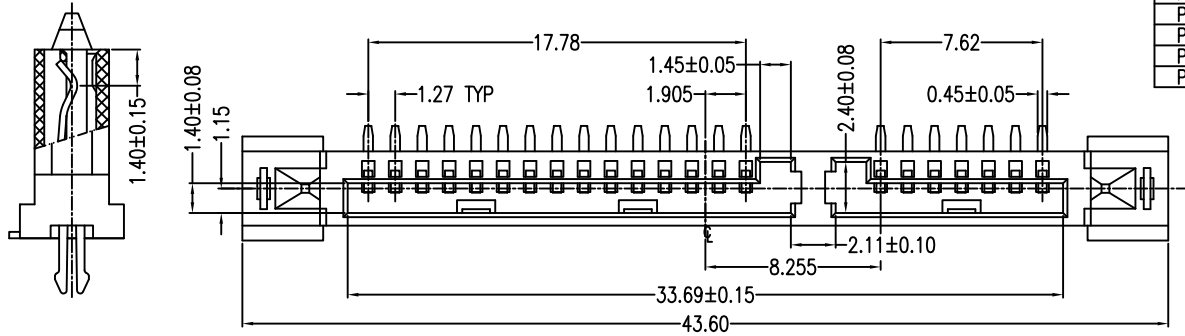
Current Rating: 1.5 Ampere Per Contact
 Contact Resistance: 30mΩ Max.
 Insulation Resistance: 1000MΩ Min.
 Dielectric Withstanding Voltage: 500V AC

*Environmental

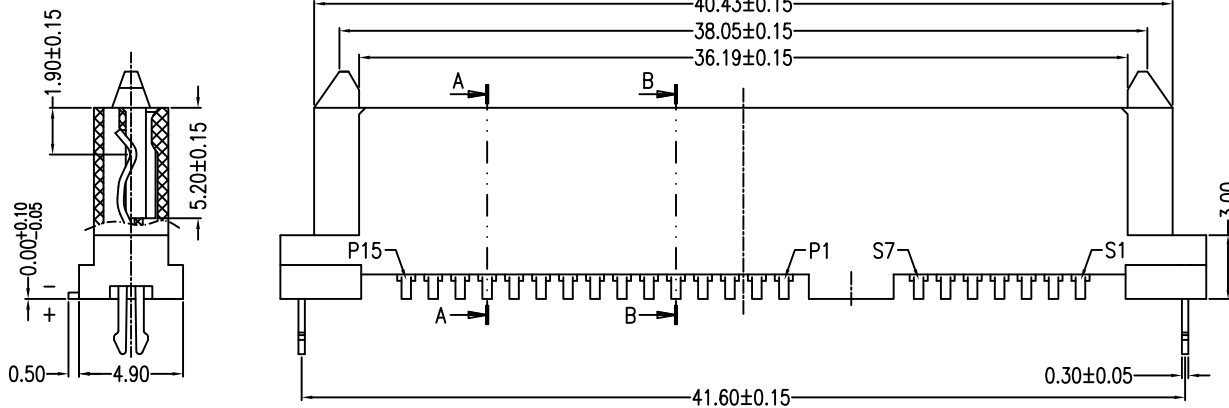
Operating Temperature: -55°C To +85°C

*How to Order

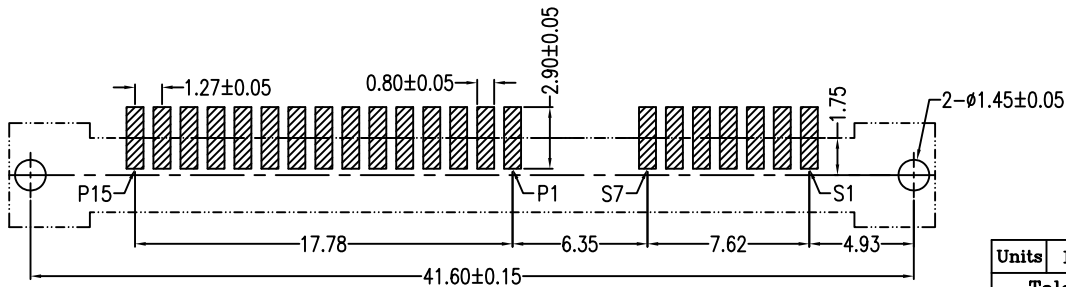
2SAT-F22-V5S-00
 Au F:Flash 5:15u" 3:30u"
 NO. Of Contacts
 Series No.



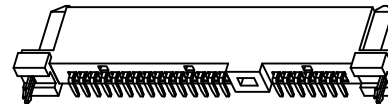
SECTION A-A



SECTION B-B



PCB LAYOUT(T=1.60mm)
 COMPONENT SIDE



Units	mm	Scale	Drawing By	Date	SINGATRON U.S.A.				
Tolerance Unless Otherwise Specified			Jack	10/01-'14					
.X	~	±0.35	Reviewed By	Date	Date	10/01-'14	Title	SATA 7+15P SMT Type, Vertical Female	
.XX	~	±0.25	Sharon	10/01-'14	Sheet	1 of 1			
.XXX	~	±0.15	Approval By	Date	Third Angle Projection				
Angle	~	± 3°	Jason	10/02-'14	Drawing No.		2SAT-F22-V5S-00	REV	F