

REV.	ECN.NO.	DATE
A	RELEASED	11/18/02
E	Add Color	05/11/09
F	Update The Drawing	03/07/12

**NOTES:**

**\*Material**

Housing: LCP+50%G.F, UL94 V-0, Color: Black;  
 Contact: Phosphor Bronze;  
 Plating: Au Plating On Contact Area;  
 Sn(100u\* Min.) Plating On Solder Tail;  
 Ni(40u\* Min.) Underplating Overall  
 Harpoon: Brass;  
 Plating: Sn(100u\* Min.) Plating On Solder Tail;  
 Ni(40u\* Min.) Underplating Overall

**\*Mechanical**

Insertion Force: 45N Max.  
 Withdrawal Force: 10N Min.  
 Durability: 500 Cycles

**\*Electrical Specification**

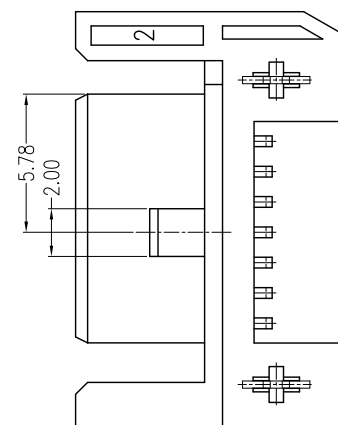
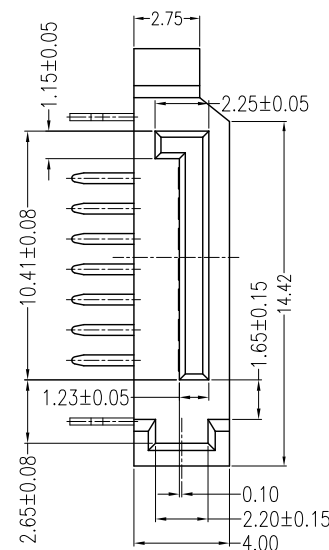
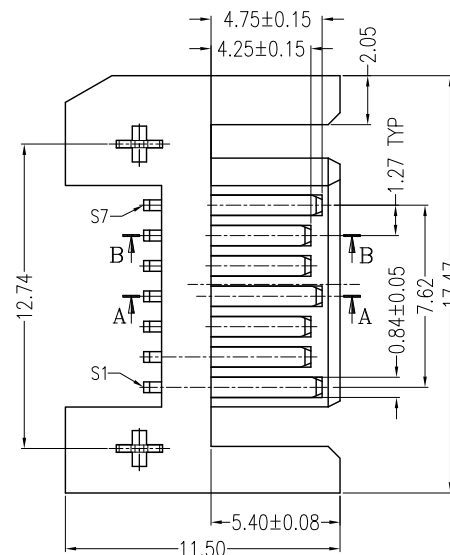
Current Rating: 1.5A Per Contact  
 Contact Resistance: 30mΩ Max.  
 Insulation Resistance: 1000MΩ Min.  
 Dielectric Withstanding Voltage: 500V AC

**\*Environmental**

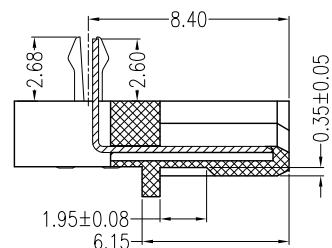
Operating Temperature: -55°C To +85°C

**\*How To Order**

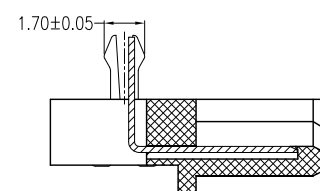
2SAT-M07-R5D-S0  
 └─ Blank:Black; 6:Red(187C)  
 └─ Au: F:Flash; 5:15u"; 3:30u"  
 └─ Number Of Contact  
 └─ Serial ATA For Card



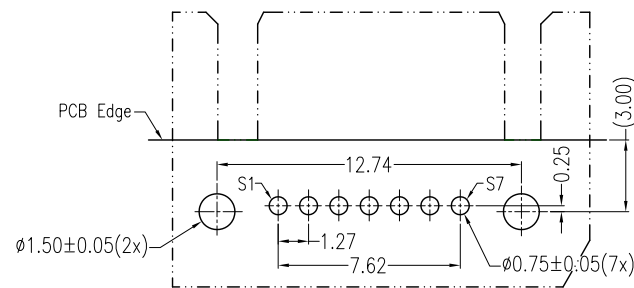
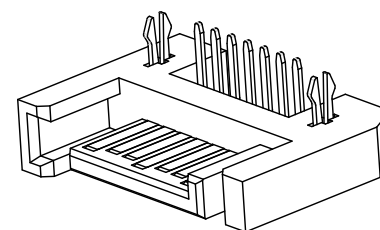
Pin	SIGNAL NAME
S1	GND
S2	A+
S3	A-
S4	GND
S5	B-
S6	B+
S7	GND



SECTION:A-A



SECTION:B-B



P.C.B. LAYOUT(T=1.60mm)  
COMPONENT SIDE

Units	mm	Scale	Drawing By	Date	SINGATRON U.S.A.						
Tolerance Unless Otherwise Specified			Peter	03/07/12							
.X	~	±0.38	Reviewed By	Date	Date	03/07/12	Title	SATA 7 Pin (DIP Type)			
.XX	~	±0.25	Sharon	03/07/12	Sheet	1 of 1					
.XXX	~	±0.20	Approval By	Date	Third Angle Projection			Drawing No.	2SAT-M07-R5D-S0	REV	F
Angle	~	± 3°	Jason	03/07/12							