

REV.	ECN.NO.	DATE
A	RELEASED	12/13-'05
C	Add View	10/12-'09
D	Cancel the glass fiber	10/15-'13

NOTES:

***Material**

Housing: LCP UL 94V-0 rated, Color: Black;
Contact: Brass;

Plating: Au Plating on contact area,
Sn(100u"Min) plating on Solder tail,
Ni(40u" Min) underplating overall;

Harpoon: Sn(100u"min.)Plating Over Ni(50u"min.)underplating over all

***Mechanical**

Insertion Force: 45N max.
Withdrawal Force: 10N min.
Durability: 500 cycles

***Electrical Specification**

Current Rating: 1.5 Ampere per contact;
Contact Resistance: 30 mΩ max.
Insulation Resistance: 1000 MΩ min.
Dielectric Withstanding Voltage: 500 V AC.

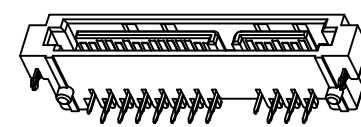
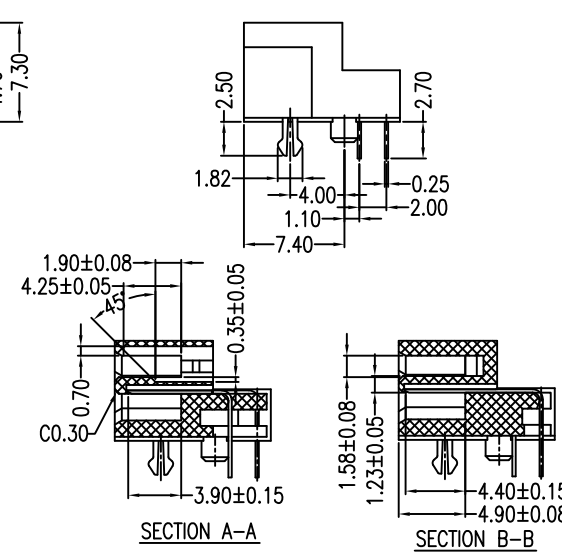
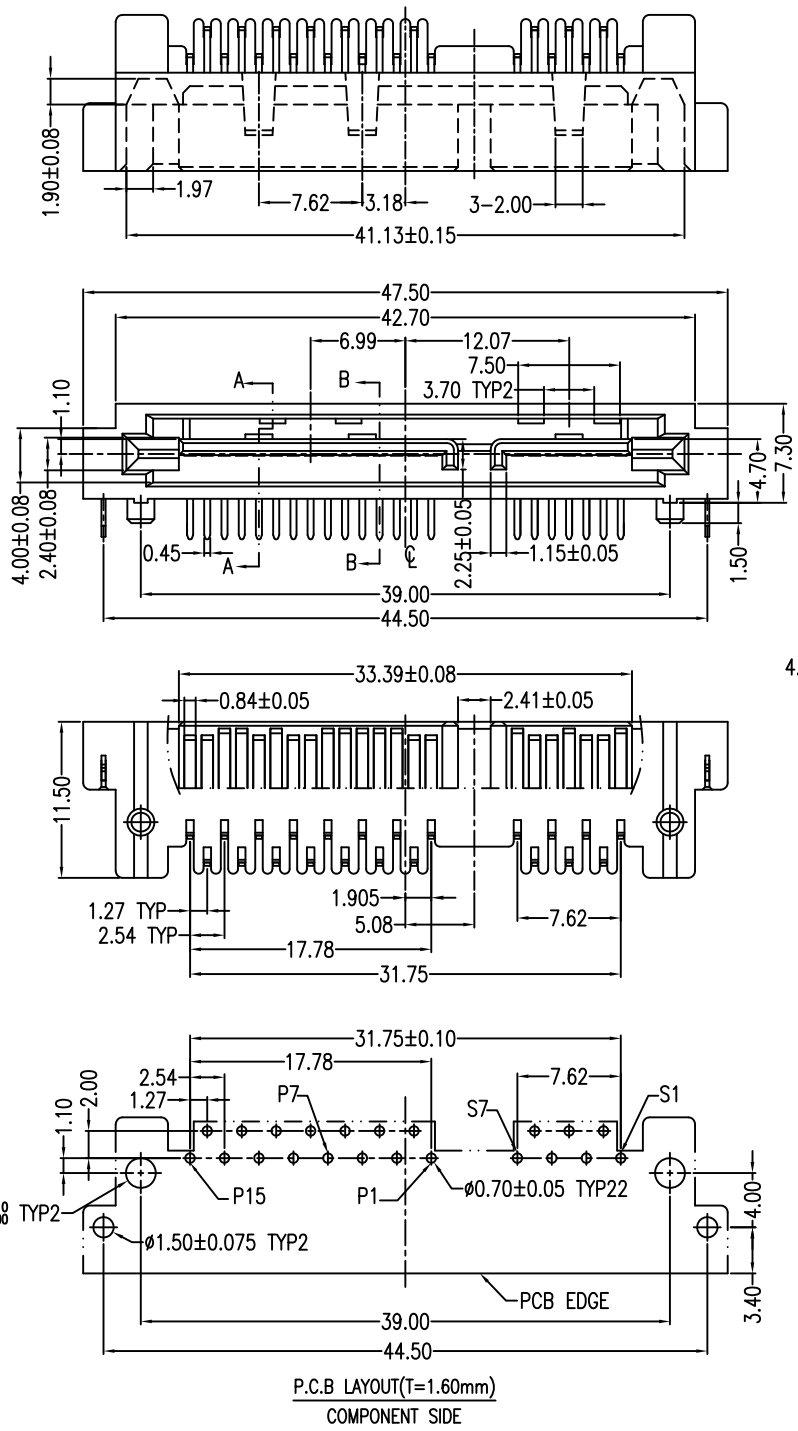
***Environmental**

Operating Temperature: -55°C to +85°C

***How to order**

2SAT-M22-R5D-00
 ↳ Au F:Flash 5:15u" 3:30u"
 ↳ Number of Contacts
 ↳ Series No.

Signal Segment		Power Segment			
Name	Type	Name	Type	Name	Type
S1	GND	P1	V3.3	P9	V5
S2	A+	P2	V3.3	P10	GND
S3	A-	P3	V3.3	P11	DAS/DSS
S4	GND	P4	GND	P12	GND
S5	B-	P5	GND	P13	V12
S6	B+	P6	GND	P14	V12
S7	GND	P7	V5	P15	V12
		P8	V5		



Units	mm Scale	5:3	Drawing By	Date	SINGATRON U.S.A.				
			May	11/15-'13					
			Reviewed By	Date	Date	10/15/13	Title	Serial ATA 7+15P Right Angle(90°)	
			Sharon	11/15-'13	Sheet	1 of 1			
			Approval By	Date	Third Angle Projection		Drawing No.	2SAT-M22-R5D-00	
			Jason	11/15-'13					REV
Tolerance Unless Otherwise Specified									
.X	~ ±0.38								
.XX	~ ±0.25								
.XXX	~ ±0.20								
Angle	~ ± 3°								