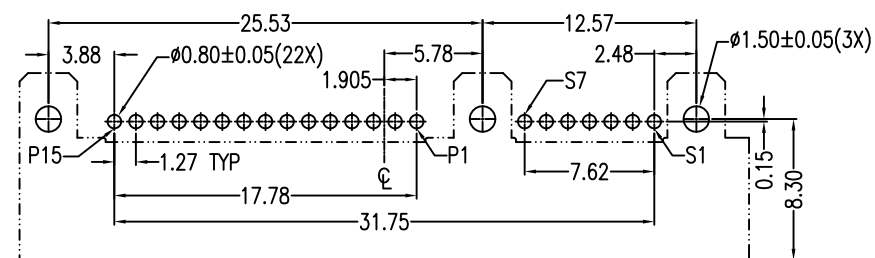
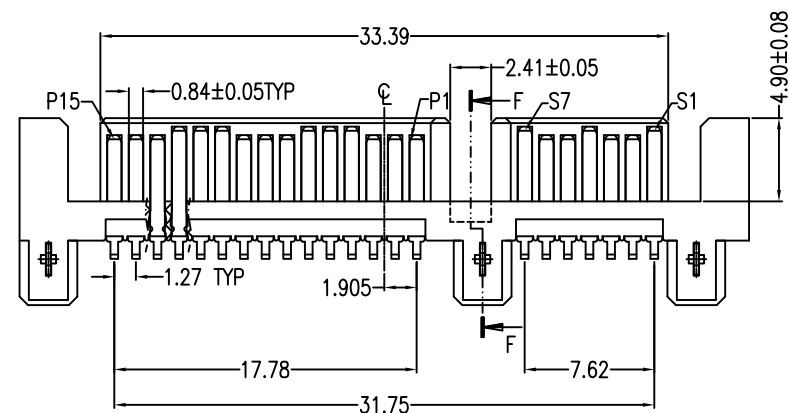
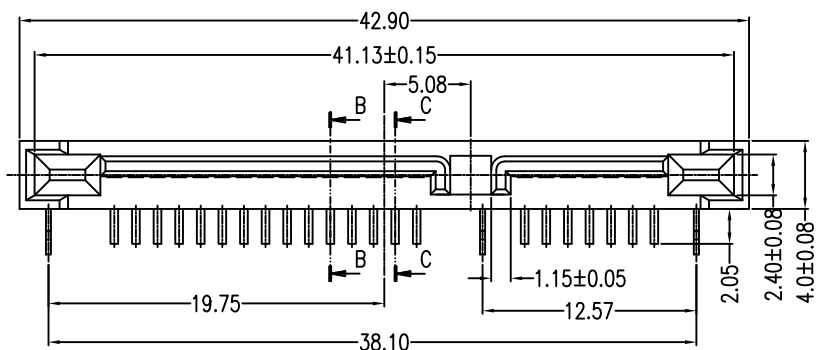


REV.	ECN.NO.	DATE
A	RELEASED	05/16/03
E	Modify 3D View	04/16-'12
F	Cancel the glass fiber	10/15-'13

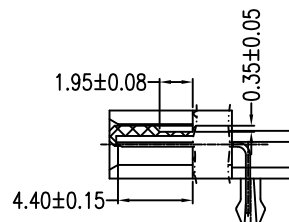


PCB Edge

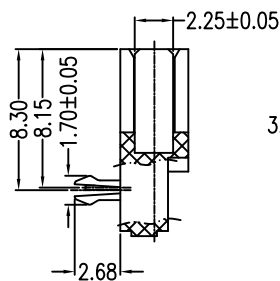
P.C.B. LAYOUT(T=1.60mm)  
COMPONENT SIDE

Signal Name	Segment Type
S1	GND
S2	A+
S3	A-
S4	GND
S5	B-
S6	B+
S7	GND

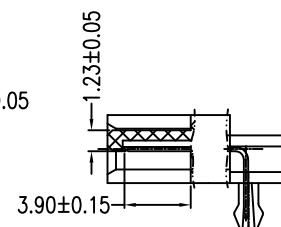
Power Name	Segment Type
P1	V3.3
P2	V3.3
P3	V3.3
P4	GND
P5	GND
P6	GND
P7	V5
P8	V5
P9	V5
P10	GND
P11	DAS/DSS
P12	GND
P13	V12
P14	V12
P15	V12



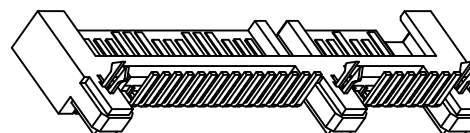
SECT B-B



SECT F-F



SECT C-C



**NOTES:**

**\*Material**

Housing: LCP UL 94V-0 rated, Color: Black;  
 Contact: Brass;  
 Plating: Au Plating on contact area  
 Sn(100u"Min) plating on solder Tail.  
 Ni(40u"Min) contact underplating overall.  
 Harpoon: Brass;  
 Plating: Sn(100u"Min) plating over Ni(50u"Min).

**\*Mechanical**

Insertion Force: 45N max.  
 Withdrawal Force: 10N min.  
 Durability: 500 cycles

**\*Electrical Specification**

Current Rating: 1.5 Ampere per contact;  
 Contact Resistance: 30 mΩ max.  
 Insulation Resistance: 1000 MΩ min.  
 Dielectric Withstanding Voltage: 500V AC.

**\*Environmental**

Operating Temperature: -55°C to +85°C.

**\*How to Order:**

2SAT-M22-R5D-10  
 Au F:Flash 5:15u"  
 NO. of Contacts  
 Series No.

Units	mm	Scale	2:1	Drawing By	Date	SINGATRON U.S.A.			
Tolerance Unless Otherwise Specified				Jack	11/15-'13				
.X	~	±0.38		Reviewed By	Date	Date	10/15-'13	Title	Serial ATA 7+15P 90° DIP Type Male
.XX	~	±0.25		Sharon	11/15-'13	Sheet	1 of 1	Third Angle Projection	
.XXX	~	±0.20		Approval By	Date				
Angle	~	± 3°		Jason	11/15-'13	Drawing No.	2SAT-M22-R5D-10	REV	F