

REV.	ECN.NO.	DATE
A	RELEASED	12/01-'06
B	Modify housing shape	06/28-'11
C	Cancel the glass fiber	10/15-'13

NOTES:

***Material**

Housing: LCP UL 94V-0 rated, Color: Black;
 Contact: Brass;
 Plating: Au plating on contact area,
 Sn(100u" Min) plating on solder tail,
 Ni(40u" Min) underplating over all;
 Harpoon: Brass, Sn(100u" Min) plating on solder tail,
 Ni(50u" Min) underplating over all.

***Mechanical**

Insertion Force: 45N Max;
 Withdrawal Force: 10N Min;
 Durability: 500 cycles.

***Electrical Specification**

Current Rating: 1.5 Ampere per contact;
 Contact Resistance: 30mΩ Max;
 Insulation Resistance: 1000MΩ Min;
 Dielectric Withstanding Voltage: 500V AC.

***Environmental**

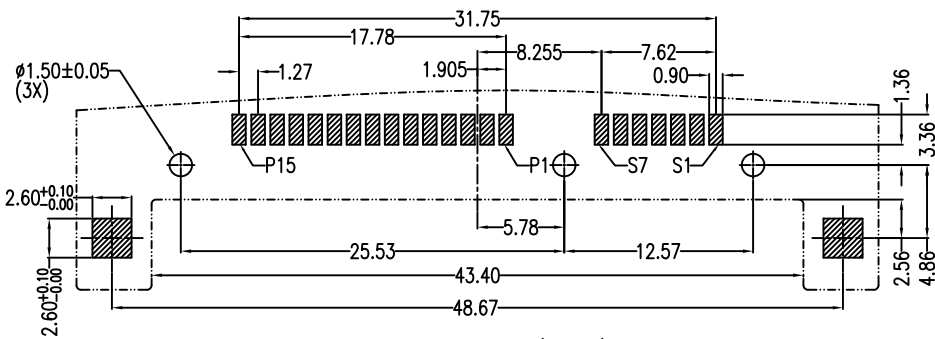
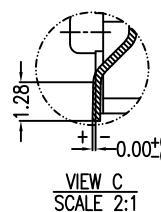
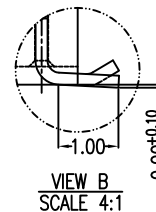
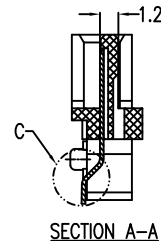
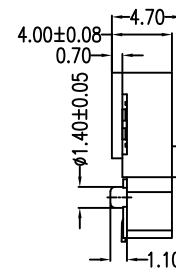
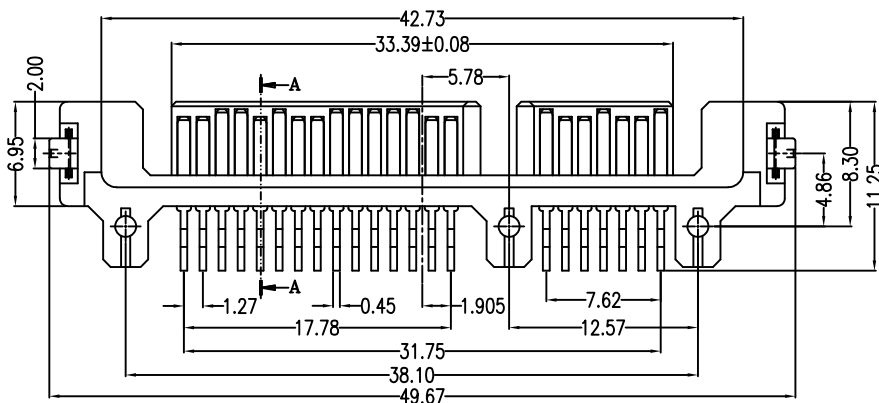
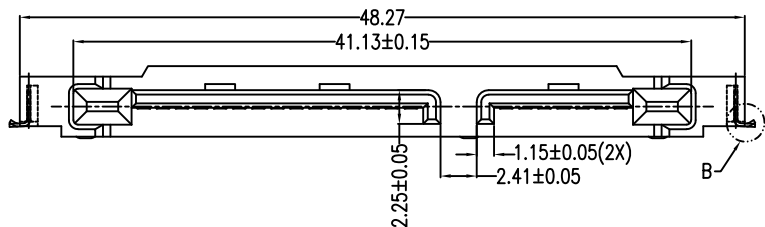
Operating Temperature: -55°C to +85°C

***How to order**

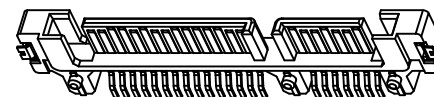
2SAT-M22-R5S-01
 Au F:Flash 5:15u" 3:30u"
 Number of Contacts
 Series No.

Signal Segment	
Name	Type
S1	GND
S2	A+
S3	A-
S4	GND
S5	B-
S6	B+
S7	GND

Power Segment	
Name	Type
P1	V3.3
P2	V3.3
P3	V3.3
P4	GND
P5	GND
P6	GND
P7	V5
P8	V5
P9	V5
P10	GND
P11	DAS/DSS
P12	GND
P13	V12
P14	V12
P15	V12



PCB LAYOUT(T=1.60)
COMPONENT SIDE



Singatron Enterprise Co., Ltd.

Tolerance Unless Otherwise Specified		TITLE	Serial ATA 7+15P 90° SMT Male		
.X	±0.38	DWN	11/15-'13	JACK	PART NO. 2SAT-M22-R5S-01
.XX	±0.25	CHKD	Sharon	SCALE 1:1	UNIT: mm
.XXX	±0.20	APVD	Jason	SIZE: A3	SHEET: 1 OF 1
Angle	± 3°	REV: C			

CUSTOMER COPY