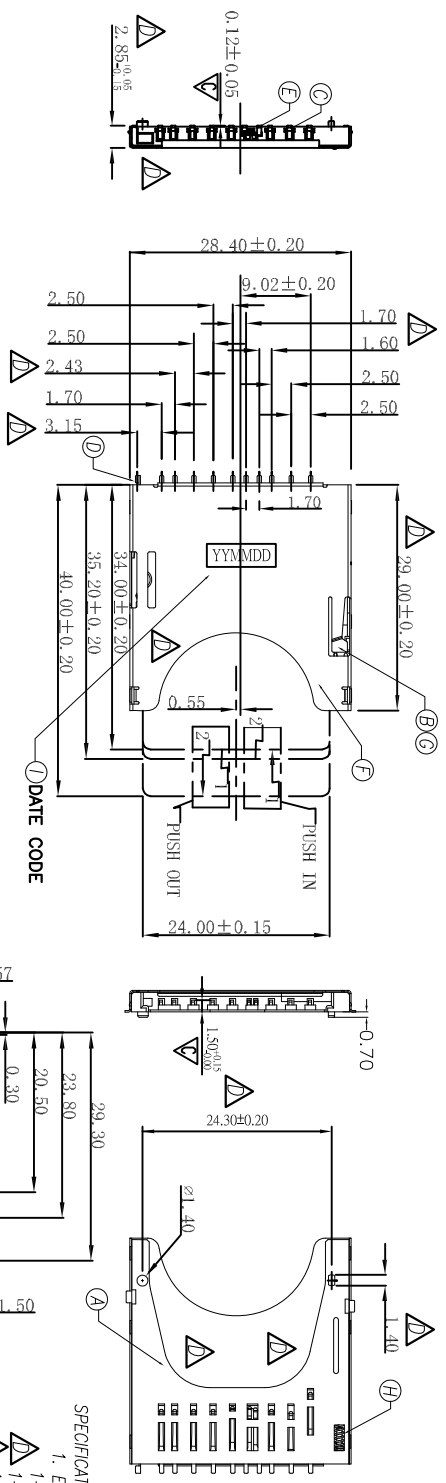


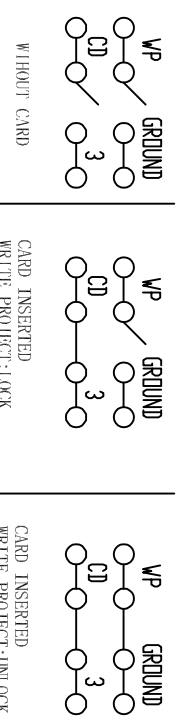
REV. ECN NO. OR DESCRIPTION	REVISED	DATE
A PDR RELEASE	WY-C	2011.04.19
B ECN NO.:L120032	WY-C	2012.03.28
C ECN NO.:L120177	WY-C	2013.01.04
D ECN NO.:L140056	WY-C	2015.05.06



SPECIFICATIONS:

- ELECTRICAL CHARACTERISTICS:
  - CURRENT RATING: 0.5A MAX.
  - VOLTAGE RATING: 100 VAC.
  - CONTACT RESISTANCE: 100mΩ MAX.
  - INSULATION RESISTANCE: 1000MΩ MIN. @ 500V DC.
  - DIELECTRIC WITHSTANDING VOLTAGE: 500V AC FOR 1 MINUTE.
- MECHANICAL CHARACTERISTICS:
  - INSERTION FORCE: 1.40kgf MAX.
  - WITHDRAWAL FORCE: 0.20kgf MIN.
  - LIFE TEST: 10,000 CYCLES.
  - OPERATING TEMPERATURE: -25°C TO +85°C.
  - OTHER GENERAL SPEC. TO REFER "2SD1510 SERIES SPEC".
  - TO CONFORM TO THE SINGATRON HAZARDOUS SUBSTANCE FREE SPEC.
  - GREEN PRODUCT IDENTIFICATION LABEL ON PACKAGING: **G-P PASS**
  - PACKAGE: SEE "2SD1510 SERIES" PACKAGE.
  - FOR REFLOW SOLDERING LEAD-FREE PROCESS.

P.C.B LAYOUT  
TOLERANCE: ±0.05



PART NO.  
2SD1510-000111H

- SUFFIX: HALOGEN
- PACKAGE
- 1: TAPE AND REEL
- HOUSING COLOR
- CONTACT PLATING
- 1: MATTING AREA: GOLD FLASH
- SOLDER AREA: MATTIE TIN

Pin#	Name	Type	Description
1	CD/DAT3	I/O/PP	Card Detect/Data Line [6kΩ]
2	CMD	PP	Command/Response
3	Vss1	S	Supply voltage ground
4	VDD	S	Supply voltage
5	CLK	S	Clock
6	VSS2	S	Supply voltage ground
7	DAT0	I/O/PP	Data Line [0]
8	DAT1	I/O/PP	Data Line [1]
9	DAT2	I/O/PP	Data Line [2]

NO	DESCRIPTION	QTY	MATERIAL	PLATING & COLOR
A	BODY	1	LCP UL94V-0	BLACK
B	SLIDER	1	LCP UL94V-0	BLACK
C	CONTACT	9	PHOSPHOR BRONZE	SEE PART NO.
D	WP PIN	1	PHOSPHOR BRONZE	SEE PART NO.
E	CD PIN	1	PHOSPHOR BRONZE	SEE PART NO.
F	SHELL	1	STAINLESS STEEL	NICKEL PLATED/SOLDER ANGLE/GOLD FLASH
G	DRAG LINK	1	STAINLESS STEEL	NICKEL PLATED
H	SPRING	1	SWP-B	BLACK
I	INK	1		

DECIMALS:	ANGLES:
X : ±0.5	X : ±2°
X.X : ±0.3	X.X : ±1°
X.XX : ±0.2	

TITLE	SD CARD READER, PUSH-PUSH TYPE
DWG	W-C 2015.05.06
CHKD	W-C 2015.05.06
APVD	W-C 2015.05.06

CUSTOMER COPY