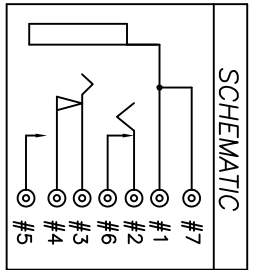
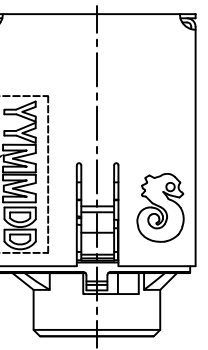


RECOMMENDED PCB LAYOUT  
TOP VIEW(TOL.±0.05)



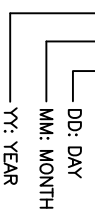
RECOMMEND PLUG  
3-POLE(Tolerance: ±0.05)



DATE CODE.

SPECIFICATIONS:

- ELECTRICAL CHARACTERISTICS:
  - RATING: 12V 1A
  - CONTACT RESISTANCE: 30mΩ MAX.(INITIAL)
  - DIELECTRIC WITHSTANDING VOLTAGE: 500V AC FOR ONE MINUTE.
  - INSULATION RESISTANCE: 100MΩ MIN. MEASURED BY 500 VDC
- MECHANICAL CHARACTERISTICS:
  - INSERTION FORCE : 0.4~3.0 KGf.
  - WITHDRAWAL FORCE : 0.3~3.0KGf.
  - LIFE TEST: 5,000 CYCLES MIN.
  - OTHER GENERAL SPEC. TO REFER "2SU-□351 SPEC".
  - TO CONFORM TO SINGATRON HAZARDOUS SUBSTANCE FREE SPEC.
  - HALOGEN FREE PRODUCT IDENTIFICATION MARK ON JACK.
  - HALOGEN FREE PRODUCT IDENTIFICATION LABEL ON PACKAGING.
  - FOR REFLOW SOLDERING LEAD FREE PROCESS.
  - PACKAGING: TAPE & REEL
  - PRINTED DATE CODE "MMDD" ON TOP OF CONNECTOR.



NO	DESCRIPTION	QTY	MATERIAL	PLATING & COLOR
H	SHIELDING	1	PHOSPHOR BRONZE 0.2t	Ni 60μm
G	TRANSFER TERMINAL	1	PHOSPHOR BRONZE 0.2t	GOLD FLASH ON CONTACT AREA
F	BREAK TERMINAL	1	PHOSPHOR BRONZE 0.2t	Sn 120μ ON SOLDER
E	RING SPRING	1	PHOSPHOR BRONZE 0.2t	ALL OVER IN 50μ.
D	SHUNT TERMINAL-A	1	BRASS 0.25t	GOLD FLASH ON CONTACT AREA
C	TIP SPRING	1	PHOSPHOR BRONZE 0.25t	OVER IN 50μ.
B	EARTH	1	PHOSPHOR BRONZE 0.2t	Ag 200μm OVER Ni 200μ Min.
A	BODY	1	HIGH TEMP.THERMOPLASTIC	GREEN (3415C)

DECIMALS:	ANGLES:	TITLE	PART NO.2SI-B351-008F
X :±0.5	X :±2°	DWN Eileen	SCALE:4:1
X.X :±0.3	X.X :±1°	CHKD Sky	UNIT: mm
X.XX :±0.2		APVD Lussen	SIZE: A3 SHEET:1 OF 1

CUSTOMER COPY

REV.	E/CN NO OR DESCRIPTION	REVISED	DATE
A	PDR NO.:T11017-2A	Eileen	2011.11.29