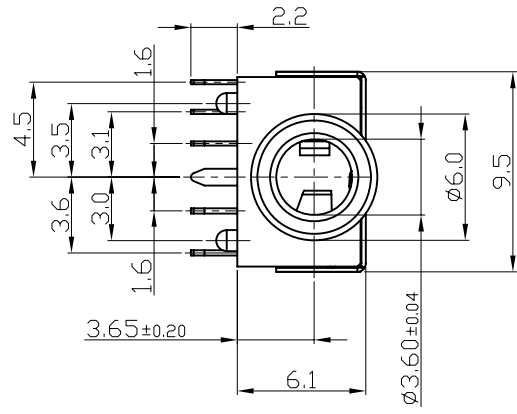
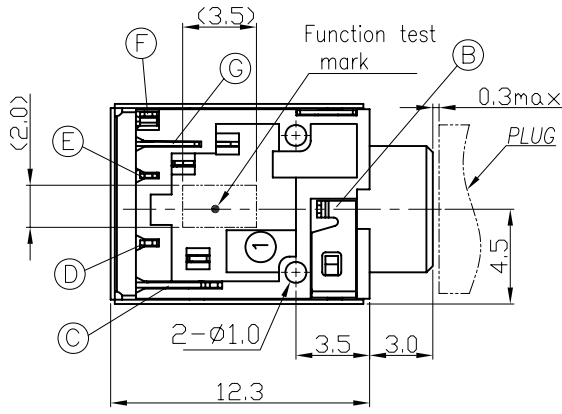
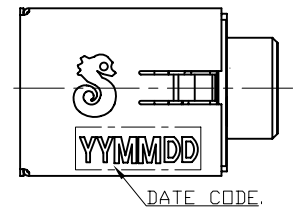
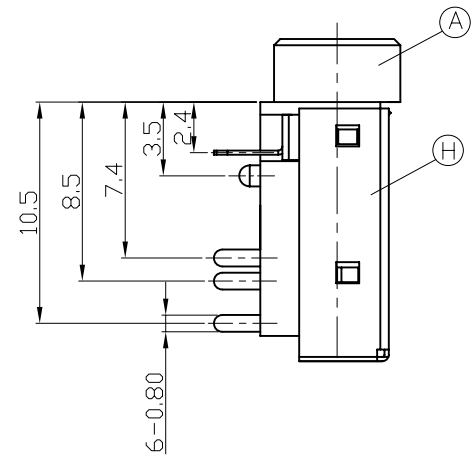
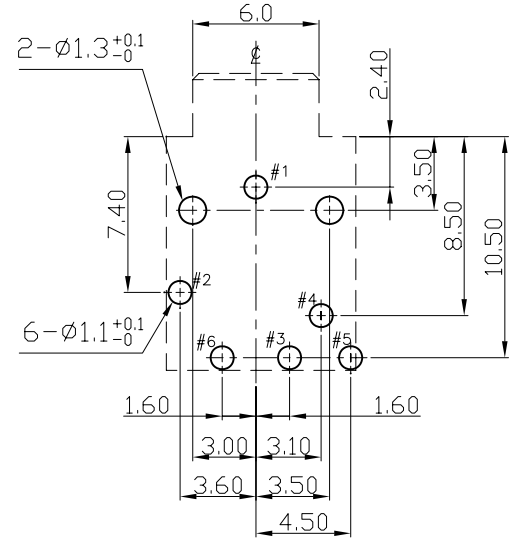


REV.	ECN NO OR DESCRIPTION	REVISED	DATE
A	PDR NO: T100527-1A/1B/1C	BOYE.QI	2010.07.22
B	ECN NO: S120324	Angus	2012.05.31



- SPECIFICATIONS:
- INSULATION RESISTANCE BETWEEN ANY ADJACENT OPEN CIRCUIT TERMINAL SHELL NOT BE LESS THAN 100MΩ MEASURED BY 500 VDC MEGGER.
 - CONTACT RESISTANCE: 30mΩ MAX.
 - INSULATION VOLTAGE WITHSTAND: 500V AC FOR ONE MINUTE.
 - UNLESS OTHERWISE SPECIFIED, TEST IS TO BE MADE AT 5-35°C IN TEMPERATURE AND 45-85% IN HUMIDITY. BUT, IF ANY VAGUE DATA IS OCCURED ON TEST RESULT, ANOTHER TEST SHALL BE MADE AT 20°C±2°C IN TEMP., 60-70% IN HUMIDITY.
 - LIFE TEST: 5,000 CYCLES MIN. (NON-LOAD)
 - INSERTION FORCE: 0.4 - 3Kg.
 - WITHDRAWAL FORCE: 0.3 - 2Kg.
 - AFTER LIFE TEST, CONTACT RESISTANCE: 50mΩ MAX.
 - AFTER HUMIDITY TEST, INSULATION RESISTANCE: 50MΩ MIN.
 - MARKING: MARK "S" ON TOP OF CONNECTOR.
 - PACKING: TAPE & REEL
 - TO CONFORM TO SINGATRON HAZARDOUS SUBSTANCE FREE SPEC.
 - HALOGEN FREE PRODUCT IDENTIFICATION MARK ON PRODUCT: Ⓢ
 - HALOGEN FREE PRODUCT IDENTIFICATION LOGO ON PACKAGING:



RECOMMENDED PCB LAYOUT
TOP VIEW (TOL. ±0.05)

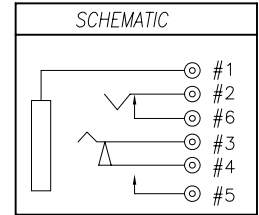
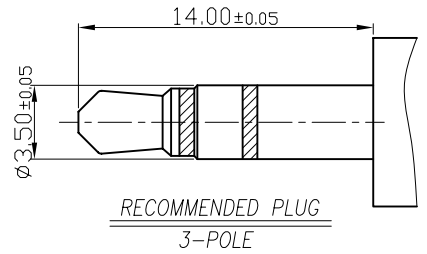


TABLE:

P/N	COLOR
2SJ-C351-022	GRAY (422C)
2SJ-C351-023	ORANGE (157C)
2SJ-C351-024	BLACK

H	SHIELDING	1	PHOSPHOR BRONZE 0.2t	Ni 60u"
G	TRANSFER TERMINAL	1	PHOSPHOR BRONZE 0.2t	GOLD FLASH ON CONTACT AREA
F	BREAK TERMINAL	1	PHOSPHOR BRONZE 0.2t	Sn 120u" ON SOLDER TAIL;
E	RING SPRING	1	PHOSPHOR BRONZE 0.2t	OVER Ni 50u" Min.
D	SHUNT TERMINAL-A	1	BRASS 0.25t	GOLD FLASH ON CONTACT AREA;
C	TIP SPRING	1	PHOSPHOR BRONZE 0.25t	OVER Ni 50u" Min.
B	EARTH	1	PHOSPHOR BRONZE 0.2t	Ag 20u" Min Over Ni 20u" Min.
A	BODY	1	HIGH TEMP.THERMOPLASTIC UL 94V-0	SEE"TABLE"
NO	DESCRIPTION	QTY	MATERIAL	PLATING & COLOR

UNLESS OTHERWISE SPECIFIED TOLERANCES

DECIMALS:		ANGLES:		TITLE
X	:±0.5	X	:±2°	3.5Ø PHONE JACK
X.X	:±0.3	X.X	:±1°	DWN Angus PART NO.2SJ-C351-02□
X.XX	:±0.2			CHKD Tom SCALE:4:1 UNIT: mm
				APVD Tony SIZE: A3 SHEET: 1 OF 1 REV: B
CUSTOMER COPY				