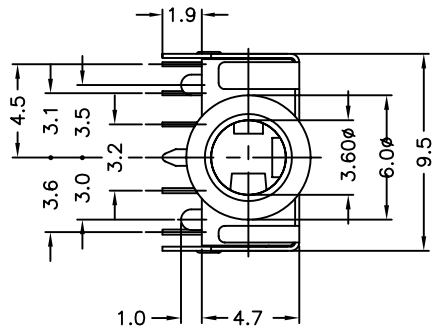
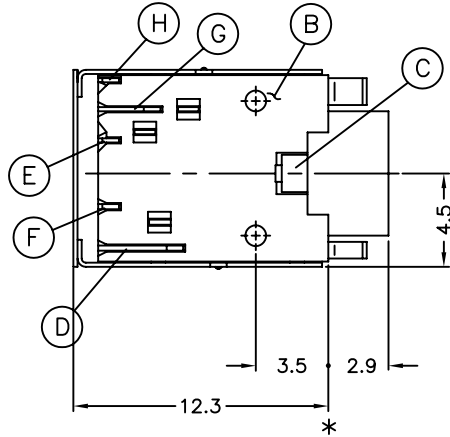
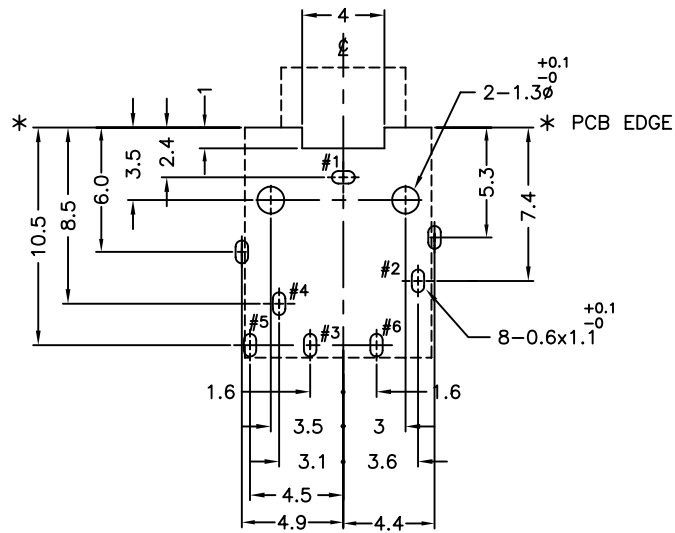


REV.	ECN NO OR DESCRIPTION	REVISED	DATE
A	PRODUCT RELEASE	Connie	2005-12-07
B	ECN NO.T060226	BERYL	2006.6.20

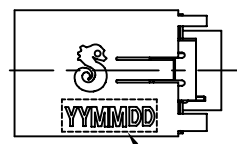
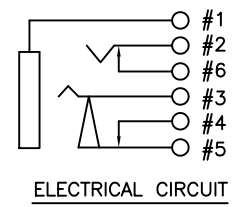
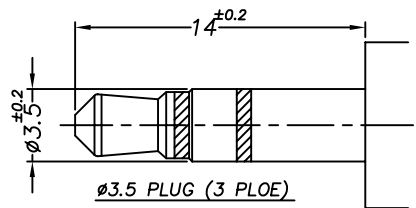
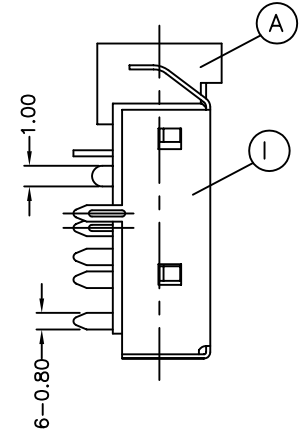


**SPECIFICATIONS :**

- INSULATION RESISTANCE BETWEEN ANY ADJACENT OPEN CIRCUIT TERMINAL SHELL NOT BE LESS THAN 100MΩ MEASURED BY 500 VDC MEGGER.
- CONTACT RESISTANCE : 30mΩ MAX.
- DIELECTRIC VOLTAGE WITHSTAND : 500V AC FOR ONE MINUTE.
- UNLESS OTHERWISE SPECIFIED. TEST IS TO BE MADE AT 5-35°C IN TEMPERATURE AND 45-85% IN HUMIDITY. BUT,IF ANY VAGUE DATA IS OCCURED ON TEST RESULT, ANOTHER TEST SHALL BE MADE AT 20°C±2°C IN TEMP., 60-70% IN HUMIDITY.
- LIFE TEST : 5,000 CYCLES MIN. (NON-LOAD)
- INSERTION FORCE : 0.4 - 3Kg.
- WITHDRAWAL FORCE : 0.3 - 2Kg.
- AFTER LIFE TEST, CONTACT RESISTANCE: 50mΩ MAX.
- AFTER HUMIDITY TEST, INSULATION RESISTANCE : 50MΩ MIN.
- PACKING : TAPPING & REEL.
- TO CONFORM TO THE "SE-01-001" & "ROHS DIRECTIVE"
- GREEN PRODUCT IDENTIFICATION MARK IN JACK:
- GREEN PRODUCT IDENTIFICATION LABEL IN PACKING: **G.P. PASS**
- FOR LEAD-FREE PROCESS.



RECOMMENDED PCB LAYOUT (TOLERANCE ±0.05)  
BOTTOM VIEW (SOLDER SIDE)



I	SHIELDING	1	PHOSPHOR BRONZE 0.2t	NICKEL PLATING
H	TRANSFER TERMINAL	1	COPPER ALLOY 0.2t	SILVER PLATING
G	BREAK TERMINAL	1	BRASS 0.2t	SILVER PLATING
F	SHUNT TERMINAL-A	1	BRASS 0.25t	SILVER PLATING
E	RING SPRING	1	PHOSPHOR BRONZE 0.2t	SILVER PLATING
D	TIP SPRING	1	PHOSPHOR BRONZE 0.25t	SILVER PLATING
C	EARTH	1	COPPER ALLOY 0.3t	SILVER PLATING
B	SEPARATOR	1	HIGH TEMP.THERMOPLASTIC UL 94V-0	BLACK COLOR
A	BODY	1	HIGH TEMP.THERMOPLASTIC UL 94V-0	GREEN COLOR (PANTONE NO.3415C)
NO	DESCRIPTION	QTY	MATERIAL	PLATING & COLOR
UNLESS OTHERWISE SPECIFIED TOLERANCES			Singatron Enterprise Co., Ltd. 信音企業股份有限公司	
DECIMALS:		ANGLES:		TITLE
X :±0.5		X :±2°		<b>3.5Ø PHONE JACK</b>
X.X :±0.3		X.X :±1°		DWN BERYL 2006.6.20 PART NO. 2SJ-C820-S65
X.XX :±0.2				CHKD JERRY 2006.6.21 SCALE: 4/1 UNIT: mm
				APVD KAN 2006.6.21 SIZE: A3 SHEET: OF REV: B
<b>CUSTOMER COPY</b>				