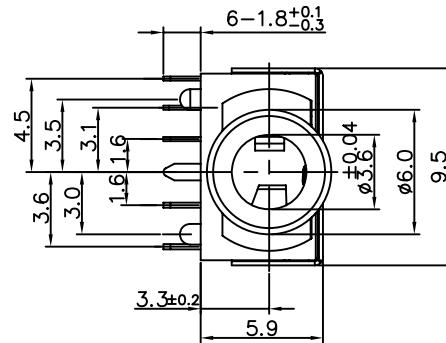
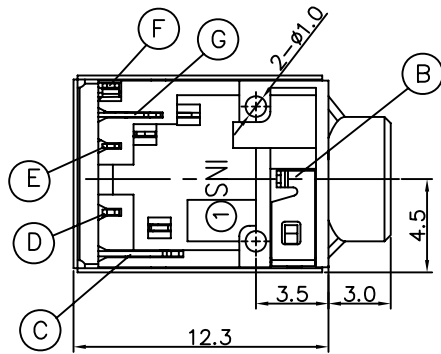
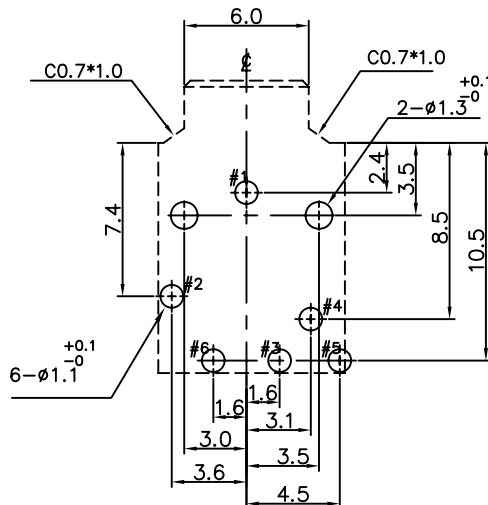


REV.	ECN NO OR DESCRIPTION	REVISED	DATE
A	PDR NO:T091009-1A	Bruce	2009.11.23

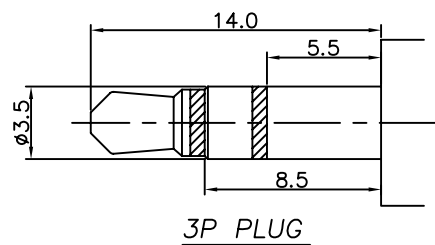


SPECIFICATIONS:

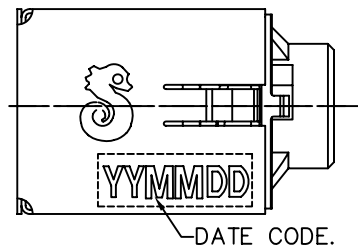
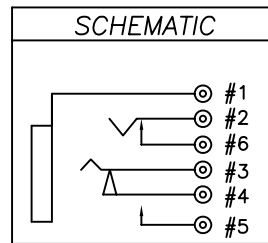
- INSULATION RESISTANCE BETWEEN ANY ADJACENT OPEN CIRCUIT TERMINAL SHELL NOT BE LESS THAN 100MΩ MEASURED BY 500 VDC MEGGER.
- CONTACT RESISTANCE G 30mΩ MAX.
- INSULATION VOLTAGE WITHSTAND G 500V AC FOR ONE MINUTE.
- UNLESS OTHERWISE SPECIFIED. TEST IS TO BE MADE AT 5-35°C IN TEMPERATURE AND 45-85% IN HUMIDITY. BUT, IF ANY VAGUE DATA IS OCCURED ON TEST RESULT, ANOTHER TEST SHALL BE MADE AT 20°C±2°C IN TEMP., 60-70% IN HUMIDITY.
- LIFE TEST : 5,000 CYCLES MIN. (NON-LOAD)
- INSERTION FORCE G 0.4 - 3Kg.
- WITHDRAWAL FORCE G 0.3 - 2Kg.
- AFTER LIFE TEST, CONTACT RESISTANCE: 50mΩ MAX.
- AFTER HUMIDITY TEST, INSULATION RESISTANCE :50MΩ MIN.
- METAL, EARTH AND SHIELDING MUST BE CONDUCT.
- MARKING: MARK "S" ON TOP OF CONNECTOR.
- PACKAGING : TAPE & REEL.
- TO CONFORM TO SINGATRON HAZARDOUS SUBSTANCE FREE SPEC.
- HALOGEN FREE PRODUCT IDENTIFICATION MARK ON PRODUCT:
- HALOGEN FREE PRODUCT IDENTIFICATION LOGO ON PACKING:
- FOR LEAD-FREE PROCESS.



RECOMMENDED PCB LAYOUT
TOP VIEW(TOL.±0.05)



3P PLUG



NO	DESCRIPTION	QTY	MATERIAL	PLATING & COLOR
H	SHIELDING	1	PHOSPHOR BRONZE 0.2t	Ni1.5um ALL PLATING
G	TRANSFER TERMINAL	1	PHOSPHOR BRONZE 0.2t	120u" MATTE Sn ON SOLDER
F	BREAK TERMINAL	1	PHOSPHOR BRONZE 0.2t	GOLD FLASH ON CONTACT AREA
E	RING SPRING	1	PHOSPHOR BRONZE 0.2t	ALL OVER 50u" Ni.
D	SHUNT TERMINAL-A	1	BRASS 0.25t	GOLD FLASH ON CONTACT AREA
C	TIP SPRING	1	PHOSPHOR BRONZE 0.25t	OVER 50u" Ni.
B	EARTH	1	PHOSPHOR BRONZE 0.2t	Ag0.5 um Min, OVER 50u" Ni .
A	BODY	1	HIGH TEMP.THERMOPLASTIC UL 94V-0	BLACK
NO	DESCRIPTION	QTY	MATERIAL	PLATING & COLOR
UNLESS OTHERWISE SPECIFIED TOLERANCES		Singatron Enterprise Co., Ltd. 信音企業股份有限公司		
DECIMALS:		TITLE		
X	±0.5	3.5φ PHONE JACK		
X.X	±0.3	DWN Bruce 2009.11.23 PART NO.2SJ-P351-S03		
X.XX	±0.2	CHKD BOYE 2009.11.20 SCALE:4:1 UNIT: mm		
		APVD MAX 2009.11.20 SIZE: A3 SHEET:1 OF 1 REV: A		
CUSTOMER COPY				