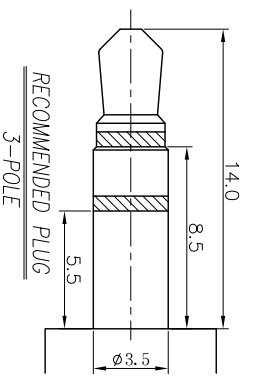
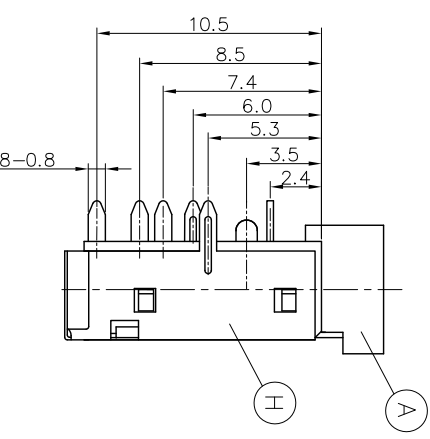
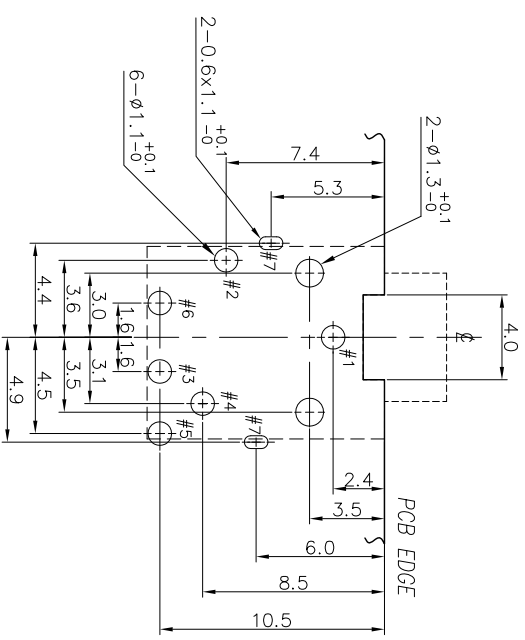
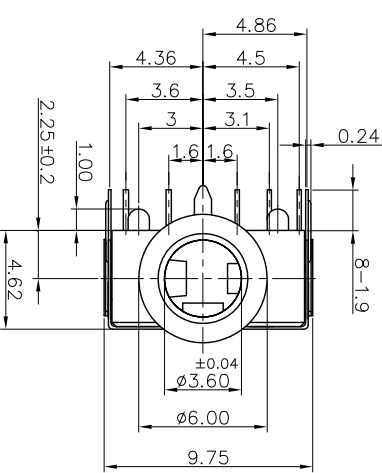
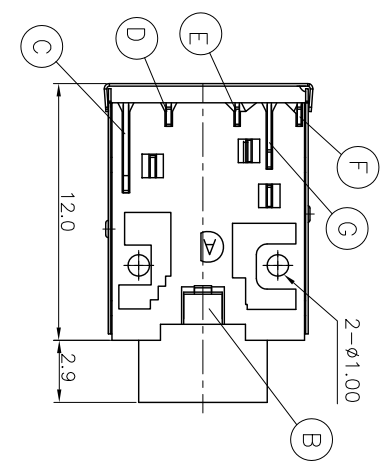
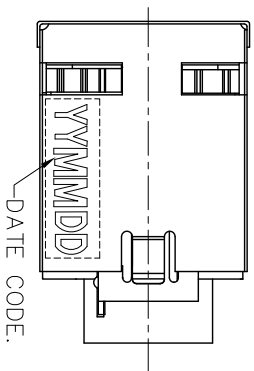
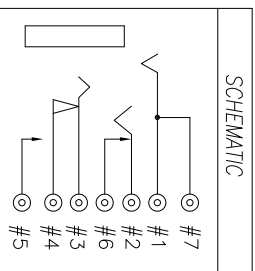


|        |                    |             |        |         |            |
|--------|--------------------|-------------|--------|---------|------------|
| REV. A | EEN NO. 1110107-4A | DESCRIPTION | Spring | REVISED | DATE       |
|        |                    |             |        |         | 2011.03.16 |

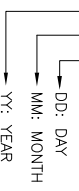


RECOMMENDED PCB LAYOUT (TOP VIEW)  
(TOLERANCE: ±0.05)



SPECIFICATIONS:

- ELECTRICAL CHARACTERISTICS:
  - 1-1. RATING: 12V 1A
  - 1-2. CONTACT RESISTANCE: 30mΩ MAX. (INITIAL)
  - 1-3. DIELECTRIC WITHSTANDING VOLTAGE: 500V AC FOR ONE MINUTE.
  - 1-4. INSULATION RESISTANCE: 100MΩ MIN. MEASURED BY 500 VDC
- MECHANICAL CHARACTERISTICS:
  - 2-1. INSERTION FORCE : 0.4~3.0 KGF.
  - 2-2. WITHDRAWAL FORCE : 0.3~2.0KGF.
- LIFE TEST: 5,000 CYCLES MIN.
- OTHER GENERAL SPEC. TO REFER "2SJ- □ 351 SPEC".
- PACKAGING : TAPE & REEL.
- TO CONFORM TO SINGATRON HAZARDOUS SUBSTANCE FREE SPEC
- HALOGEN FREE PRODUCT IDENTIFICATION MARK ON PRODUCT:
- HALOGEN FREE PRODUCT IDENTIFICATION LOGO ON PACKAGING:
- FOR REFLOW SOLDERING LEAD-FREE PROCESS.
- PRINTED DATE CODE "YYMMDD" ON TOP OF CONNECTOR.



|      |                                       |         |                                                                                          |                            |      |
|------|---------------------------------------|---------|------------------------------------------------------------------------------------------|----------------------------|------|
| H    | SHIELDING                             | 1       | SUS 0.12T                                                                                | Ni: 60μ" MIN.              |      |
| G    | TRANSFER TERMINAL                     | 1       | PHOSPHOR BRONZE 0.2t                                                                     | Sn 120μ" ON SOLDER TAIL    |      |
| F    | BREAK TERMINAL                        | 1       | PHOSPHOR BRONZE 0.2t                                                                     | GOLD FLASH ON CONTACT AREA |      |
| E    | RING SPRING                           | 1       | PHOSPHOR BRONZE 0.2t                                                                     | ALL OVER Ni 50μ"           |      |
| D    | SHUNT TERMINAL-A                      | 1       | BRASS 0.25t                                                                              |                            |      |
| C    | TIP SPRING                            | 1       | PHOSPHOR BRONZE 0.25t                                                                    | Ag 20μ" Min.               |      |
| B    | EARTH                                 | 1       | COPPER ALLOY 0.3t                                                                        | OVER Ni 50μ"               |      |
| A    | BODY                                  | 1       | HIGH TEMP.THERMOPLASTIC                                                                  | BLACK                      |      |
| NO   | DESCRIPTION                           | QTY     | MATERIAL                                                                                 | PLATING & COLOR            |      |
|      | UNLESS OTHERWISE SPECIFIED TOLERANCES |         | UL 94V-0                                                                                 |                            |      |
|      | DECIMALS:                             | ANGLES: | Singatron Enterprise Co., Ltd.<br>信音企業股份有限公司<br>3.5φ PHONE JACK<br>PART NO.2SJ-S351-077F |                            |      |
| X    | :±0.5                                 | X       |                                                                                          |                            | :±2° |
| X.X  | :±0.3                                 | X.X     |                                                                                          |                            | :±1° |
| X.XX | :±0.2                                 |         |                                                                                          |                            |      |
|      | TITLE                                 |         |                                                                                          |                            |      |
|      | DWN                                   | Spring  |                                                                                          |                            |      |
|      | CHKD                                  | BONE    | SCALE:4:1                                                                                | UNIT: mm                   |      |
|      | APVD                                  | QMM     | SIZE: A3                                                                                 | SHEET: 1 OF 1              |      |
|      |                                       |         |                                                                                          | REV:A                      |      |
|      |                                       |         | CUSTOMER COPY                                                                            |                            |      |