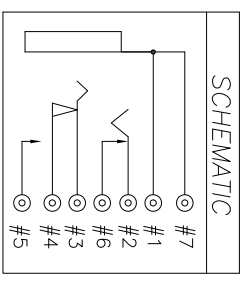
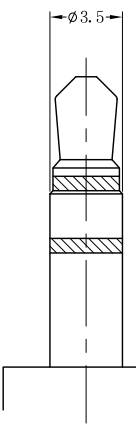
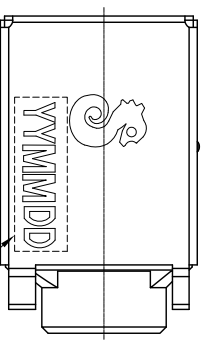


RECOMMENDED PCB LAYOUT
TOP VIEW(TOL.±0.05)



ELECTRICAL CIRCUIT
REVERSE



- SPECIFICATIONS:
- INSULATION RESISTANCE BETWEEN ANY ADJACENT OPEN CIRCUIT TERMINAL SHELL NOT BE LESS THAN 100MΩ MEASURED BY 500 VDC MEGGER.
 - CONTACT RESISTANCE:30m ΩMAX.
 - INSULATION VOLTAGE WITHSTAND:
500V AC FOR ONE MINUTE.
 - UNLESS OTHERWISE SPECIFIED, TEST IS TO BE MADE AT 5-35°C IN TEMPERATURE AND 45-85% IN HUMIDITY. BUT,IF ANY VAGUE DATA IS OCCURED ON TEST RESULT, ANOTHER TEST SHALL BE MADE AT 20°C±2°C IN TEMP., 60-70% IN HUMIDITY.
 - LIFE TEST: 5,000 CYCLES MIN. (NON-LOAD)
 - INSERTION FORCE:0.4 - 3Kg.
 - WITHDRAWAL FORCE:0.3 - 2Kg.
 - AFTER LIFE TEST, CONTACT RESISTANCE: 50m ΩMAX.
 - AFTER HUMIDITY TEST, INSULATION RESISTANCE≥50M ΩMIN.
 - METAL,EARTH AND SHIELDING MUST BE CONDUCT.
 - MARKING: MARK "S" ON TOP OF CONNECTOR.
 - PACKAGING : TAPE & REEL.
 - TO CONFORM TO SINGATRON HAZARDOUS SUBSTANCE FREE SPEC
 - GREEN PRODUCT IDENTIFICATION MARK ON JACK:
 - GREEN PRODUCT IDENTIFICATION LABEL ON PACKAGING: **G.P. PASS**
 - FOR LEAD-FREE PROCESS.

REV.	ECN NO OR DESCRIPTION	REVISED	DATE
B	PDR NO.1071226-1A	Sky	2008.03.03
C	ECN NO.S110320	Swing	2011.03.10

NO	DESCRIPTION	QTY	MATERIAL	PLATING & COLOR
H	SHIELDING	1	PHOSPHOR BRONZE 0.2t	Ni 60u" Over Cu60u" Min.
G	TRANSFER TERMINAL	1	PHOSPHOR BRONZE 0.2t	GOLD FLASH OVER Ni50u" Min.
F	MAKE TERMINAL	1	PHOSPHOR BRONZE 0.2t	GOLD FLASH OVER Ni50u" Min.
E	SHUNT TERMINAL-A	1	BRASS 0.25t	GOLD FLASH OVER Ni50u" Min.
D	RING SPRING	1	PHOSPHOR BRONZE 0.2t	GOLD FLASH OVER Ni50u" Min.
C	TIP SPRING	1	PHOSPHOR BRONZE 0.25t	GOLD FLASH OVER Ni50u" Min.
B	EARTH	1	PHOSPHOR BRONZE 0.2t	GOLD FLASH OVER Ni50u" Min.
A	BODY	1	HIGH TEMP.THERMOPLASTIC UL 94V-0	BLACK COLOR

UNLESS OTHERWISE SPECIFIED TOLERANCES

DECIMALS: ANGLES:
X :±0.5 X :±2°
X.X :±0.3 X.X :±1°
X.XX :±0.2

Singatron Enterprise Co., Ltd.
信登企業股份有限公司

TITLE: 3.5ø PHONE JACK
DWG: Singa 2011.03.10 PART NO.:2SI-S351-A02
CHKD: Linsen SCALE:4:1 UNIT: mm
APVD: boy SIZE: A3 SHEET: 1 OF 1 REV: C

CUSTOMER COPY