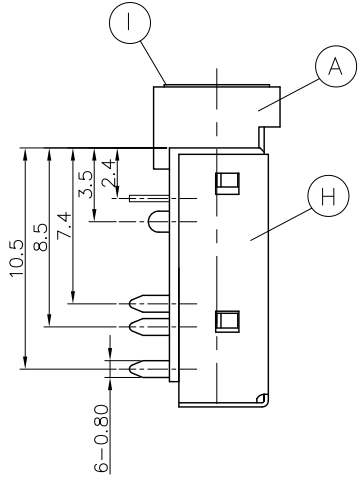
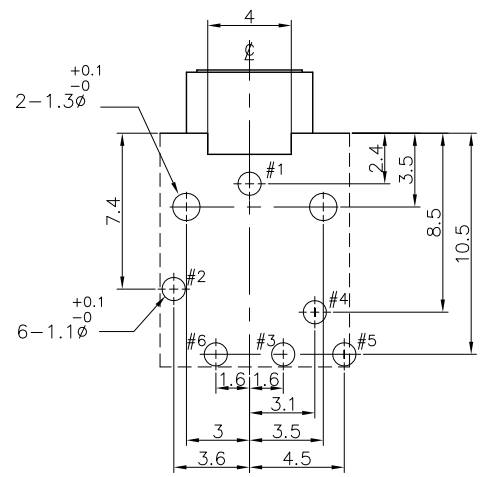
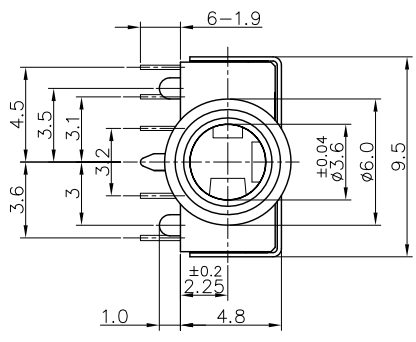
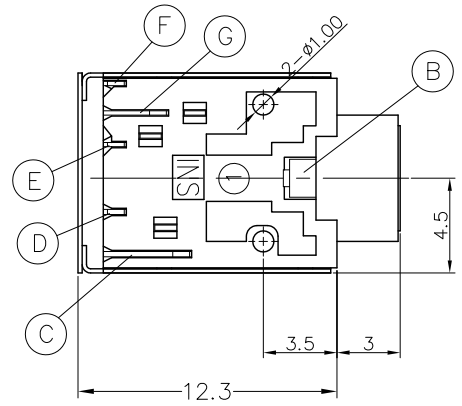
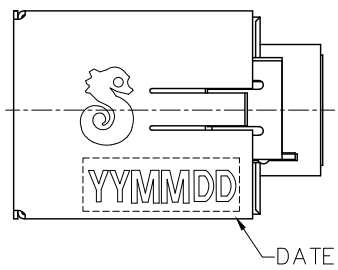
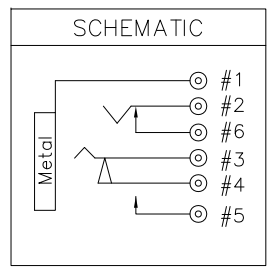
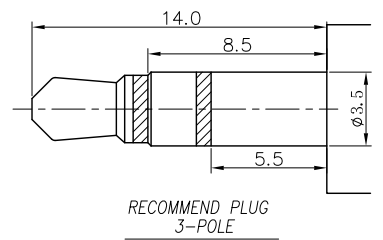


REV.	ECN NO OR DESCRIPTION	REVISED	DATE
C	ECN NO.T060223	BERYL	2007.03.06
D	ECN NO.S070503	Lussen	2007.05.11
E	ECN NO.S110320	Cerry	2011.03.28

- SPECIFICATIONS :
- INSULATION RESISTANCE BETWEEN ANY ADJACENT OPEN CIRCUIT TERMINAL SHELL NOT BE LESS THAN 100MΩ MEASURED BY 500 VDC MEGGER.
 - CONTACT RESISTANCE : 30mΩ MAX. (200mΩ MAX: METAL TO EARTH TO SHIELDING)
 - INSULATION VOLTAGE WITHSTAND : 500V AC FOR ONE MINUTE.
 - UNLESS OTHERWISE SPECIFIED. TEST IS TO BE MADE AT 5-35°C IN TEMPERATURE AND 45-85% IN HUMIDITY. BUT,IF ANY VAGUE DATA IS OCCURED ON TEST RESULT, ANOTHER TEST SHALL BE MADE AT 20°C±2°C IN TEMP., 60-70% IN HUMIDITY.
 - LIFE TEST : 5,000 CYCLES MIN. (NON-LOAD)
 - INSERTION FORCE : 0.4 - 3Kg.
 - WITHDRAWAL FORCE : 0.3 - 2Kg.
 - AFTER LIFE TEST, CONTACT RESISTANCE: 50mΩ MAX.
 - AFTER HUMIDITY TEST, INSULATION RESISTANCE : 50MΩ MIN.
 - MARKING: MARK "S" ON TOP OF CONNECTOR.
 - PACKAGING : TAPE & REEL.
 - TO CONFORM TO SINGATRON HAZARDOUS SUBSTANCE FREE SPEC.
 - GREEN PRODUCT IDENTIFICATION MARK ON JACK
 - GREEN PRODUCT IDENTIFICATION LABEL ON PACKAGING: **G.P. PASS**
 - FOR LEAD-FREE PROCESS.



Recommended PCB Layout
<TOP VIEW>TOLERANCE : ± 0.05



NO	DESCRIPTION	QTY	MATERIAL	PLATING & COLOR																
I	METAL	1	BRASS	Ni 60u" Min.																
H	SHIELDING	1	PHOSPHOR BRONZE 0.2t																	
G	TRANSFER TERMINAL	1	PHOSPHOR BRONZE 0.2t	GOLD FLASH ON CONTACT AREA;																
F	BREAK TERMINAL	1	PHOSPHOR BRONZE 0.2t	Sn 120u" On SOLDER;																
E	RING SPRING	1	PHOSPHOR BRONZE 0.2t	ALL OVER Ni 50u".																
D	SHUNT TERMINAL-A	1	BRASS 0.25t																	
C	TIP SPRING	1	PHOSPHOR BRONZE 0.25t	Ag 20u"Min OVER Ni 60u"Min.																
B	EARTH	1	COPPER ALLOY 0.3t																	
A	BODY	1	HIGH TEMP.THERMOPLASTIC UL 94V-0	BLUE (PANTONE NO.284C)																
UNLESS OTHERWISE SPECIFIED TOLERANCES		Singatron Enterprise Co., Ltd. 信音企業股份有限公司																		
DECIMALS: X :±0.5 X.X :±0.3 X.XX :±0.2		ANGLES: X :±2° X.X :±1°		<table border="1"> <tr> <td>TITLE</td> <td colspan="3">Ø3.5 PHONE JACK</td> </tr> <tr> <td>DWN</td> <td>Cerry</td> <td colspan="2">PART NO. 2SJ-S351-S09</td> </tr> <tr> <td>CHKD</td> <td>Lussen</td> <td>SCALE:4/1</td> <td>UNIT: mm</td> </tr> <tr> <td>APVD</td> <td>Iony</td> <td>SIZE: A3</td> <td>SHEET: 1 OF 1 REV: E</td> </tr> </table>	TITLE	Ø3.5 PHONE JACK			DWN	Cerry	PART NO. 2SJ-S351-S09		CHKD	Lussen	SCALE:4/1	UNIT: mm	APVD	Iony	SIZE: A3	SHEET: 1 OF 1 REV: E
TITLE	Ø3.5 PHONE JACK																			
DWN	Cerry	PART NO. 2SJ-S351-S09																		
CHKD	Lussen	SCALE:4/1	UNIT: mm																	
APVD	Iony	SIZE: A3	SHEET: 1 OF 1 REV: E																	
CUSTOMER COPY																				