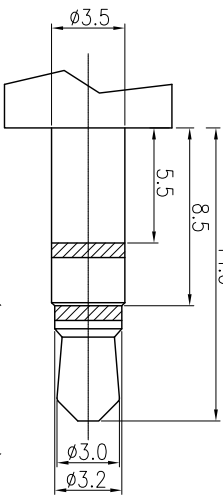


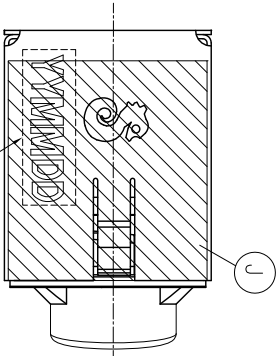
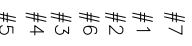
RECOMMENDED PCB LAYOUT (TOP VIEW)

(TOLERANCE:±0.05)



MATING PLUG(TOLERANCE:±0.05)
ø3.5 3-POLE STANDARD PLUG

SCHEMATIC



SPECIFICATIONS:

1. ELECTRICAL CHARACTERISTICS:
 - 1-1. RATING: 12V 1A
 - 1-2. CONTACT RESISTANCE: $30m\Omega$ MAX.(INITIAL)
 - 1-3. DIELECTRIC WITHSTANDING VOLTAGE: 500V AC FOR ONE MINUTE.
 - 1-4. INSULATION RESISTANCE: $100M\Omega$ MIN. MEASURED BY 500 VDC
2. MECHANICAL CHARACTERISTICS:
 - 2-1. INSERTION FORCE : 0.3~3.0 KGF
 - 2-2. WITHDRAWAL FORCE : 0.3~3.0 KGF
3. LIFE TEST: 5,000 CYCLES MIN.
4. PACKAGING : TAPE & REEL.
5. TO CONFORM TO SINGATRON HAZARDOUS SUBSTANCE FREE SPEC.
6. HALOGEN FREE PRODUCT IDENTIFICATION MARK ON PRODUCT.
7. HALOGEN FREE PRODUCT IDENTIFICATION LOGO ON PACKAGING.
8. FOR REFLOW SOLDERING LEAD-FREE PROCESS.

REV. A	ECN NO. OR DESCRIPTION	REVISED	DATE
	PDR:T100811-2A	Spring	2010.11.11

J	WYLAR	1	L*(W(T+9.5))	YELLOW
H	SHIELDING	1	BRASS 0.2t	Ni: 60u" Min
G	TRANSFER TERMINAL	1	PHOSPHOR BRONZE 0.2t	120u" MAT Sn ON SOLDER GOLD FLASH ON CONTACT AREA ALL OVER 50u" Ni.
F	MAKE TERMINAL	1	PHOSPHOR BRONZE 0.2t	GOLD FLASH ON CONTACT AREA ALL OVER 50u" Ni.
E	SHUNT TERMINAL-A	1	BRASS 0.25t	ALL OVER 50u" Ni.
D	RING SPRING	1	PHOSPHOR BRONZE 0.2t	Ag20u" Min, ALL OVER 50u" Ni.
C	TIP SPRING	1	PHOSPHOR BRONZE 0.25t	
B	EARTH	1	COPPER ALLOY 0.2t	
A	BODY	1	HIGH TEMP.THERMOPLASTIC UL 94V-0	BLACK
NO	DESCRIPTION	QTY	MATERIAL	PLATING & COLOR

UNLESS OTHERWISE SPECIFIED TOLERANCES

DECIMALS:	ANGLES:
X :±0.5	X :±2°
X.X :±0.3	X.X :±1'
X:XX :±0.2	

Singatron Enterprise Co., Ltd.
信管企業股份有限公司

TITLE	3.5ø PHONE JACK
DWN	Smg
CHKD	Bpe
APVD	Mx
PART NO.	2S1-T820-017
SCALE:	4:1
SIZE:	A3
SHEET:	1 OF 1
REV:	A

CUSTOMER COPY