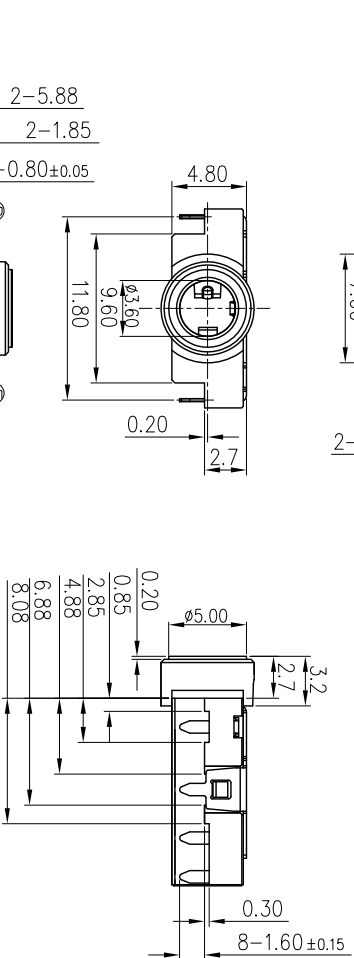
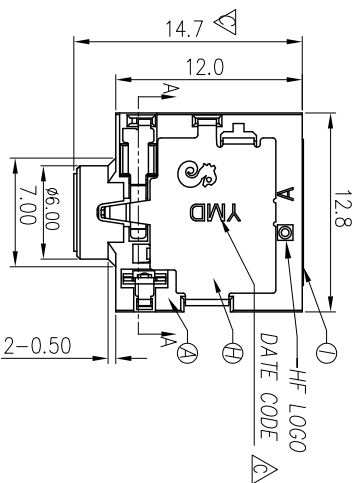
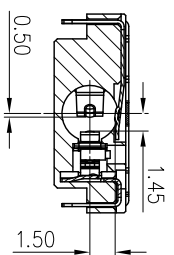
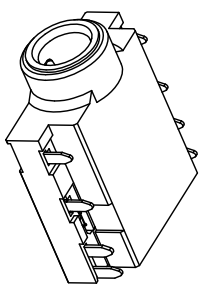


REV.	E/CN NO OR DESCRIPTION	REVISED	DATE
B	E/CN NO: C101049-16 Modify Plating specification	LongJiang	2011.06.13
C	E/CN NO: C140032 UP/DATE DATE CODE	ZLS	2014.7.14
D	E/CN NO: C140074 MODIFY LAYOUT	ZLS	2014.8.12

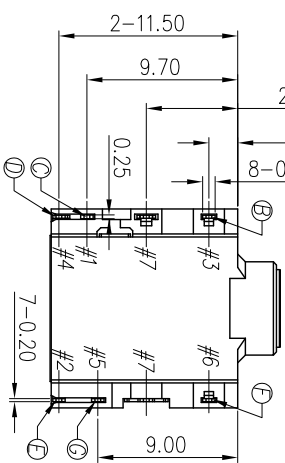


SECTION A-A

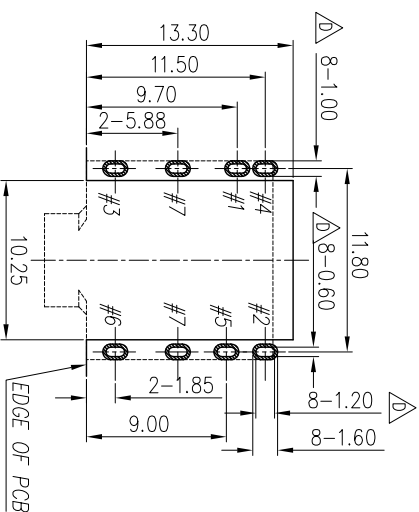
SPECIFICATIONS:

1. ELECTRICAL CHARACTERISTICS:

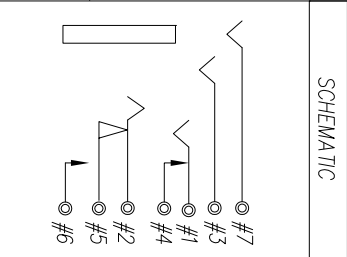
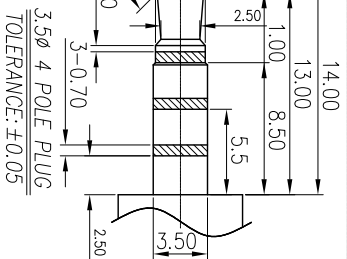
- 1-1. RATING: 12V AC, 1A DC.
 - 1-2. CONTACT RESISTANCE: 50mΩ MAX.
 - 1-3. DIELECTRIC WITHSTANDING VOLTAGE: 500V AC FOR ONE MINUTE.
 - 1-4. INSULATION RESISTANCE: 100MΩ MIN. MEASURED BY 500 VDC
2. MECHANICAL CHARACTERISTICS:
- 2-1. INSERTION FORCE : 0.4~3.0 KGf
 - 2-2. WITHDRAWAL FORCE : 0.3~2.0 KGf
 3. LIFE TEST: 5,000 CYCLES MIN.
 4. OTHER GENERAL SPEC. TO REFER "2S12285 SPEC."
 5. TO CONFORM TO THE SINGATRON HAZARDOUS SUBSTANCE FREE SPEC.
 6. HALOGEN FREE PRODUCT IDENTIFICATION MARK ON JACK:
 7. HALOGEN FREE PRODUCT IDENTIFICATION LABEL ON PACKAGING:
 8. FOR REFLOW SOLDERING LEAD-FREE PROCESS.
 9. PACKAGING: TAP&REEL



SCHEMATIC



RECOMMENDED P.C.B. LAYOUT T=1.20
TOP VIEW (TOLERANCE: ±0.05)



NO	DESCRIPTION	QTY	MATERIAL	PLATING & COLOR
I	MYLAR	1	MYLAR 0.075T	
H	SHIELD	1	COPPER ALLOY 0.20T	Nickel Plated
G	TRANSFER TERMINAL	1	COPPER ALLOY 0.20T	△ Gold Flash on contact area and Solder fill, all over Nickel Plated
F	MAKE TERMINAL	1	COPPER ALLOY 0.20T	GOLD FLASH
E	RING	1	COPPER ALLOY 0.20T	△ Gold Flash on contact area and Solder fill, all over Nickel Plated
D	SHUNT	1	COPPER ALLOY 0.20T	GOLD FLASH
C	TIP	1	COPPER ALLOY 0.20T	△ Gold Flash on contact area and Solder fill, all over Nickel Plated
B	EARTH	1	COPPER ALLOY 0.20T	GOLD FLASH
A	BODY	1	HIGH TEMP. THERMOPLASTIC UL 94V-0	BLACK COLOR

UNLESS OTHERWISE SPECIFIED TOLERANCES

Singatron Enterprise Co., Ltd.
信登企業股份有限公司

DECIMALS: ANGLES: TITLE 3.5Ø PHONE JACK

DWN ZLS 14/8/19 PART NO. 2S12285-104191F
CHKD BILLY 14/8/19 SCALE 1:1 UNIT: mm
APVD ZLZ 14/8/19 SIZE: A3 SHEET: 10F1 REV: D

X : ±0.3 X : ±1°
X.X : ±0.2 X.X : ±0.5
X.XX : ±0.1
X.XXX : ±0.05

CUSTOMER COPY