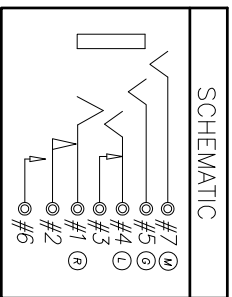
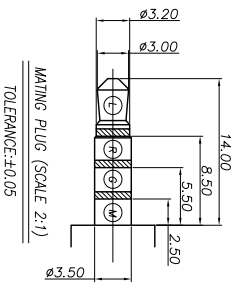
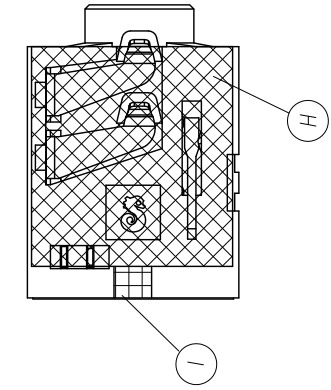


RECOMMENDED PCB LAYOUT
TOP VIEW (TOLERANCE: ± 0.05)



REV	ECN NO	OR DESCRIPTION	REVISED	DATE
A	PDR NO.:T101220-1A		Dengfeng	2011.05.11
B	ECN NO.:S110856		SPRING	2011.08.31
C	ECN NO.:S120595 & S120615		Cerry	2012.07.04
D	ECN NO.:S120817		Cerry	2012.11.26

- SPECIFICATIONS:
- ELECTRICAL CHARACTERISTICS:
 - RATING: 12V 1A
 - CONTACT RESISTANCE: 30m Ω MAX.(INITIAL)
 - DIELECTRIC WITHSTANDING VOLTAGE: 500V AC FOR ONE MINUTE
 - INSULATION RESISTANCE: 100M Ω MIN. MEASURED BY 500 VDC
 - MECHANICAL CHARACTERISTICS:
 - INSERTION FORCE : 0.3~3.0 KGF
 - WITHDRAWAL FORCE : 0.3~3.0 KGF
 - LIFE TEST: 5,000 CYCLES MIN.
 - OTHER GENERAL SPEC. TO REFER "2SJ3005 SERIES SPEC";
 - TO CONFORM TO SINGATRON HAZARDOUS SUBSTANCE FREE SPEC.
 - HALOGEN FREE PRODUCT IDENTIFICATION MARK ON JACK:
 - HALOGEN FREE PRODUCT IDENTIFICATION LABEL ON PACKAGING:
 - FOR REFLOW SOLDERING LEAD-FREE PROCESS.

I	MYLAR	1	0.06T	YELLOW
H	MYLAR	1	0.06T	YELLOW
G	BREAK TERMINAL	1	PHOSPHOR BRONZE 0.2t	720 $^{\circ}$ Matte Sn ON SOLDER AREA GOLD FLASH ON CONTACT AREA. ALL OVER Ni 50 $^{\circ}$
F	SHUNT TERMINAL-A	1	BRASS 0.25t	720 $^{\circ}$ Matte Sn ON SOLDER AREA GOLD FLASH ON CONTACT AREA. ALL OVER Ni 50 $^{\circ}$
E	RING SPRING	1	PHOSPHOR BRONZE 0.2t	720 $^{\circ}$ Matte Sn ON SOLDER AREA GOLD FLASH ON CONTACT AREA. ALL OVER Ni 50 $^{\circ}$
D	TIP SPRING	1	PHOSPHOR BRONZE 0.25t	GOLD FLASH OVER Ni 50 $^{\circ}$ Ni
C	EARTH	2	PHOSPHOR BRONZE 0.2t	GOLD FLASH OVER Ni 50 $^{\circ}$ Ni
B	TRANSFER TERMINAL	1	PHOSPHOR BRONZE 0.2t	720 $^{\circ}$ Matte Sn ON SOLDER AREA GOLD FLASH ON CONTACT AREA. ALL OVER Ni 50 $^{\circ}$
A	BODY	1	HIGH TEMP UL 94V-0	BLACK 7C
NO	DESCRIPTION		MATERIAL	PLATING & COLOR

UNLESS OTHERWISE SPECIFIED TOLERANCES

DECIMALS: ANGLES: X ± 0.5 X $\pm 2^{\circ}$
X.X ± 0.3 X.X $\pm 1^{\circ}$
X.XX ± 0.2

Singapore Enterprise Co., Ltd. 信營企業股份有限公司	
TITLE	3.5 ϕ PHONE JACK
DWN	Cerry PART NO. 2SJ3005-104211P
CHKD	Tom SCALE:4:1 UNIT: mm
APVD	Mox SIZE: A3 SHEET: 1 OF 1 REV:D

CUSTOMER COPY