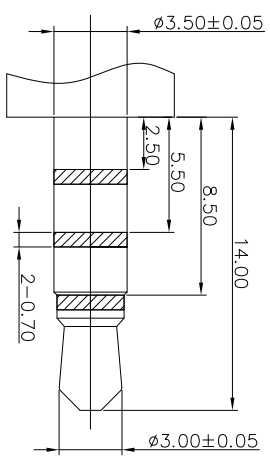
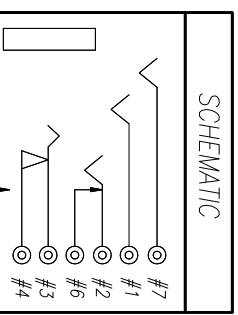
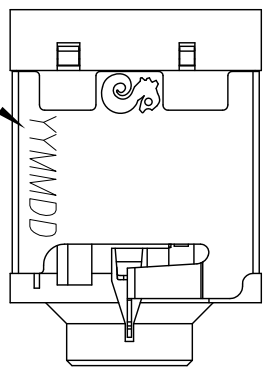
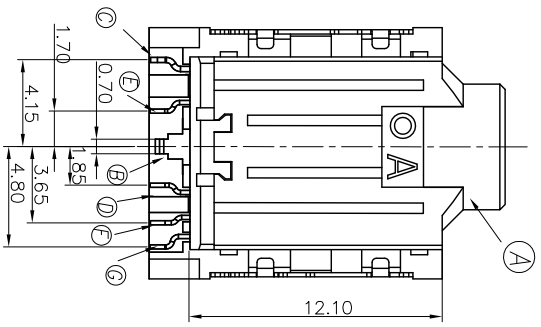


RECOMMENDED PCB LAYOUT  
TOP VIEW; TOL: ±0.05



RECOMMENDED PLUG  
Ø3.5 4-POLE STANDARD PLUG

REV.	ECN NO. OR DESCRIPTION	REVISED	DATE
A	PDR :T100309-1A	BRUCE	2010.03.13
B	ECN NO:S100613/S100616	Tom	2010.08.19
C	ECN NO:S100529-1	Allen	2010.08.27

- SPECIFICATIONS:
- INSULATION RESISTANCE BETWEEN ANY ADJACENT OPEN CIRCUIT TERMINAL SHELL NOT BE LESS THAN 100M MEASURED BY 300 VDC MEGGER.
  - INSULATION VOLTAGE WITHSTAND:  
500V AC FOR ONE MINUTE.
  - CONTACT RESISTANCE: 30mΩ MAX
  - UNLESS OTHERWISE SPECIFIED, TEST IS TO BE MADE AT 5-35°C IN TEMPERATURE AND 45-85% IN HUMIDITY. BUT IF ANY VAGUE DATA IS OCCURED ON TEST RESULT, ANOTHER TEST SHALL BE MADE AT 20°C±2°C IN TEMP., 60-70% IN HUMIDITY.
  - LIFE TEST: 5000 CYCLES MIN. (NON-LOAD)
  - INSERTION FORCE: 0.4 - 3kg.
  - WITHDRAWAL FORCE: 0.4 - 3kg.
  - AFTER LIFE TEST, CONTACT RESISTANCE: 50mΩ MAX. MIN.
  - AFTER HUMIDITY TEST, INSULATION RESISTANCE: 50MΩ MIN.
  - MARKING: MARK "S" ON TOP OF CONNECTOR.
  - PACKAGING: TAPE & REEL.
  - TO CONFORM TO SINGATRON HAZARDOUS SUBSTANCE FREE SPEC
  - HALOGEN FREE PRODUCT IDENTIFICATION MARK ON PRODUCT
  - HALOGEN FREE PRODUCT IDENTIFICATION LOGO ON PACKAGING.
  - FOR LEAD-FREE PROCESS.

I	COVER	1	HIGH TEMP THERMOPLASTIC UL 94V-0	BLACK
H	SHELL	1	PHOSPHOR BRONZE 0.2t	Au300* ON CONTACT AREA OVER Ni 60u Min
G	MAKE TERMINAL	1	PHOSPHOR BRONZE 0.2t	
F	TRANSFER TERMINAL	1	PHOSPHOR BRONZE 0.2t	Gold finish Ni 60u Min
E	SHUNT TERMINAL	1	PHOSPHOR BRONZE 0.2t	
D	RING SPRING	1	PHOSPHOR BRONZE 0.2t	
C	TIP SPRING	1	PHOSPHOR BRONZE 0.25t	Au300* ON CONTACT AREA OVER Ni 60u Min
B	RING B	1	PHOSPHOR BRONZE 0.2t	
A	BODY	1	HIGH TEMP THERMOPLASTIC UL 94V-0	BLACK
NO	DESCRIPTION	QTY	MATERIAL	PLATING & COLOR
UNLESS OTHERWISE SPECIFIED TOLERANCES				
Singatron Enterprise Co., Ltd. 信音企業股份有限公司				
TITLE		3.5φ PHONE JACK		
DWN	Rev 2010.08.27	PART NO. 2SJ3013-001311		
CHKD	Issued 2010.08.27	SCALE: 4:1	UNIT: mm	
APVD	1009 2010.08.27	SIZE: A3	SHEET: 1 OF 1	REV: C
CUSTOMER COPY				