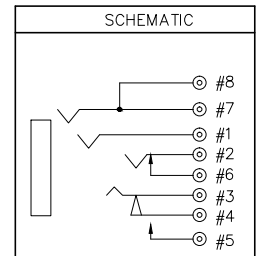
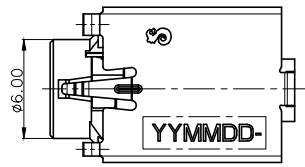
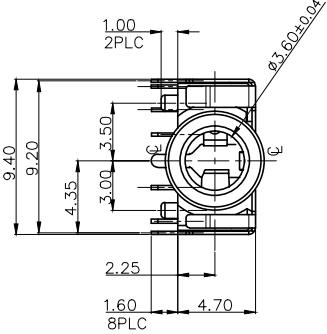
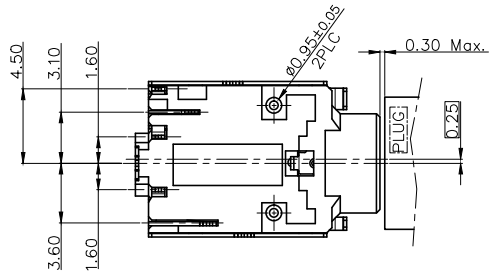
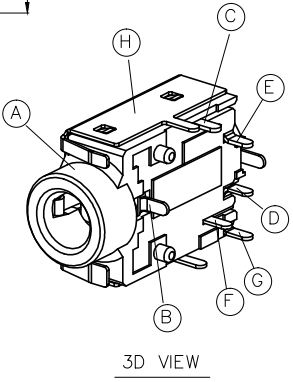
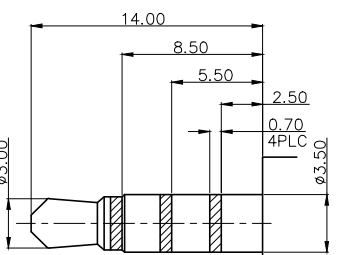
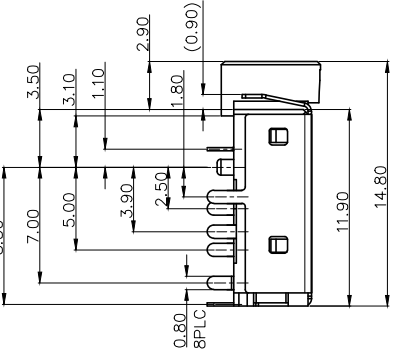
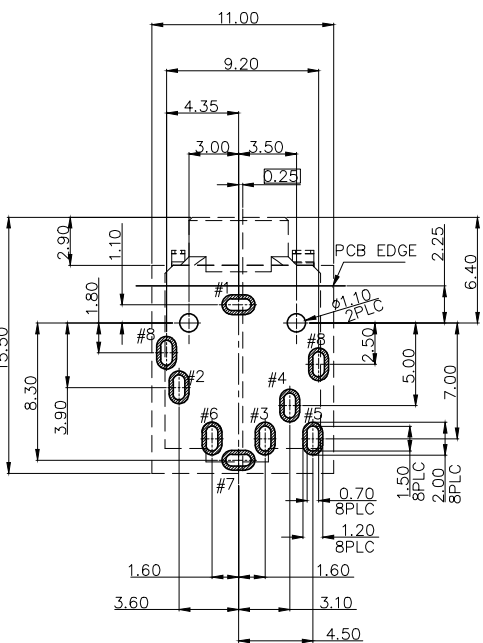


REV.	ECN NO OR DESCRIPTION	REVISED	DATE
A	PDR NO: T150724-4A	Julia	2016.1.25
B	ECN NO: S161108-P	YUREN	2017.7.26



- SPECIFICATIONS:
- INSULATION RESISTANCE BETWEEN ANY ADJACENT OPEN CIRCUIT TERMINAL SHELL NOT BE LESS THAN 100MΩ MEASURED BY 500 VDC MEGGER.
 - CONTACT RESISTANCE: 50mΩ MAX.
 - INSULATION VOLTAGE WITHSTAND: 500V AC FOR ONE MINUTE.
 - UNLESS OTHERWISE SPECIFIED. TEST IS TO BE MADE AT 5-35°C IN TEMPERATURE AND 45-85% IN HUMIDITY. BUT, IF ANY VAGUE DATA IS OCCURED ON TEST RESULT, ANOTHER TEST SHALL BE MADE AT 20°C±2°C IN TEMP., 60-70% IN HUMIDITY.
 - LIFE TEST: 5,000 CYCLES MIN.
 - INSERTION FORCE: 0.4 - 3Kg.
 - WITHDRAWAL FORCE: 0.3 - 3Kg.
 - AFTER LIFE TEST, CONTACT RESISTANCE: 60mΩ MAX.
 - AFTER HUMIDITY TEST, INSULATION RESISTANCE: 50MΩ MIN.
 - MARKING: MARK " Ⓢ " ON TOP OF CONNECTOR.
 - PACKING : TAPE & REEL.
 - TO CONFORM TO SINGATRON HAZARDOUS SUBSTANCE FREE SPEC.
 - HALOGEN FREE PRODUCT IDENTIFICATION MARK ON JACK: Ⓢ
 - HALOGEN FREE PRODUCT IDENTIFICATION LABEL ON PACKAGING: Ⓢ



NO	DESCRIPTION	QTY	MATERIAL	PLATING & COLOR
H	SHELL	1	PHOSPHOR BRONZE 0.2t	Ni 60u" MIN.
G	TRANSFER TERMINAL	1	PHOSPHOR BRONZE 0.2t	120u" Sn ON SOLDER GOLD FLASH ON CONTACT AREA ALL OVER 50u" Ni
F	BREAK TERMINAL	1	PHOSPHOR BRONZE 0.2t	ALL OVER 50u" Ni
E	SHUNT TERMINAL-A	1	BRASS 0.25t	Ag 20uin OVER Ni 60uin.
D	RING SPRING	1	PHOSPHOR BRONZE 0.2t	120u" Sn ON SOLDER GOLD FLASH ON CONTACT AREA ALL OVER 50u" Ni
C	TIP SPRING	1	PHOSPHOR BRONZE 0.25t	ALL OVER 50u" Ni
B	EARTH-A	1	COPPER ALLOY 0.2t	Ag 20u" MIN.
A	BODY	1	PPS+45%GF A305M45B UL94V-0	BLACK COLOR

DECIMALS:	ANGLES:	TITLE			
X :±0.5	X :±2°	DWN YUREN	Ⓢ Singatron Enterprise Co., Ltd. 信音企業股份有限公司		
X.X :±0.3	X.X :±1°	CHKD CERRY	SCALE: 4:1	UNIT: mm	Ⓢ
X.XX :±0.2		APVD LIAO	SIZE: A3	SHEET: 1 OF 1	REV: B
CUSTOMER COPY					

RECOMMENDED PCB LAYOUT(TOP VIEW)
(TOLERANCE: ±0.05)

RECOMMENDED PLUG(4-POLE)
(TOLERANCE: ±0.05)

3D VIEW