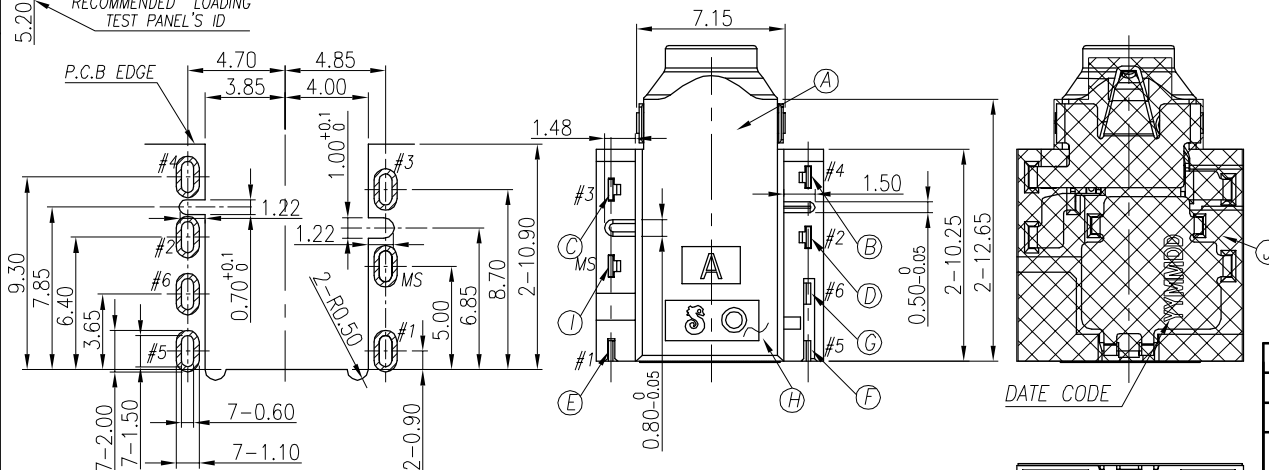
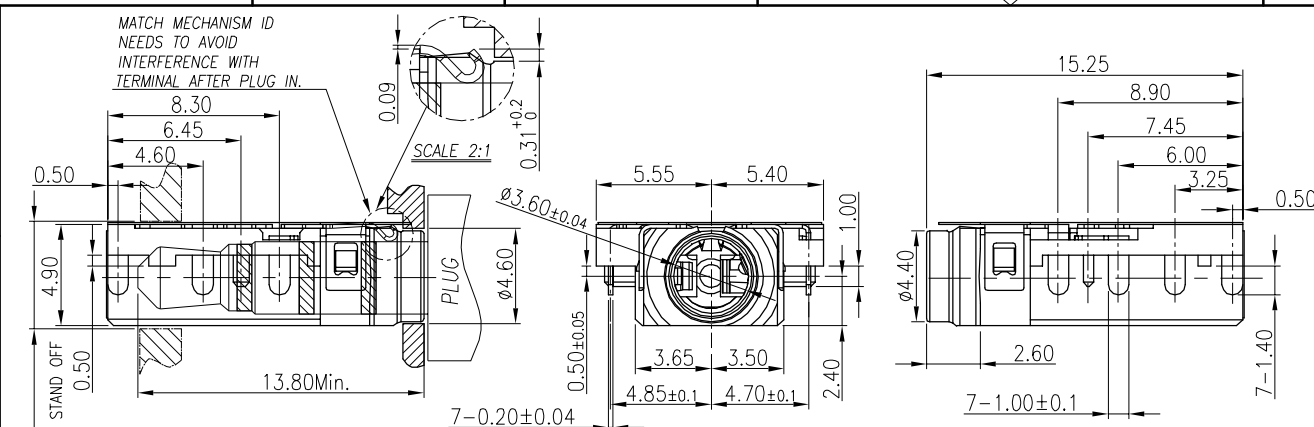


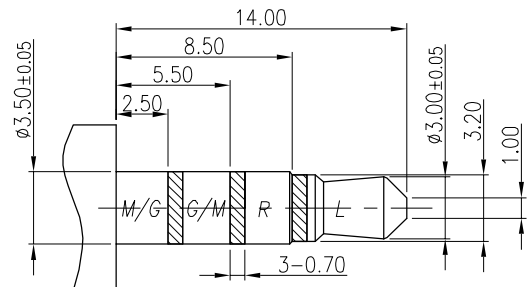
REV.	ECN NO OR DESCRIPTION	REVISED	DATE
A	PDR NO: T160204-4A-003	Ming	2016.09.22

SPECIFICATIONS:

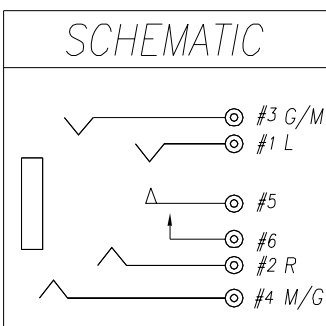
- INSULATION RESISTANCE BETWEEN ANY ADJACENT OPEN CIRCUIT TERMINAL SHELL NOT BE LESS THAN 100M Ω MEASURED BY 500 VDC.
- CONTACT RESISTANCE: 50m Ω MAX(INITIAL).
- INSULATION VOLTAGE WITHSTAND: 500V AC FOR ONE MINUTE.
- UNLESS OTHERWISE SPECIFIED. TEST IS TO BE MADE AT 5-35°C IN TEMPERATURE AND 45-85% IN HUMIDITY. BUT, IF ANY VAGUE DATA IS OCCURED ON TEST RESULT, ANOTHER TEST SHALL BE MADE AT 20°C±2°C IN TEMP., 60-70% IN HUMIDITY.
- LIFE TEST 2,000 TIMES:
INITIAL: INSERTION FORCE 0.8~3.0Kgf
WITHDRAWAL FORCE 0.6~1.8Kgf
FINAL: INSERTION FORCE 2.5Kgf Max
WITHDRAWAL FORCE 0.5Kgf Min
- AFTER LIFE TEST 5,000 TIMES:
INSERTION FORCE 0.3~3.0Kgf
WITHDRAWAL FORCE 0.3~3.0Kgf
- AFTER LIFE TEST, CONTACT RESISTANCE: 100mΩ MAX.
- AFTER HUMIDITY TEST, INSULATION RESISTANCE: 50MΩ MIN.
- MARKING: MARK "S" ON TOP OF CONNECTOR.
- PACKING : TAPE & REEL.
- TO CONFORM TO SINGATRON HAZARDOUS SUBSTANCE FREE SPEC.
- HALOGEN FREE PRODUCT IDENTIFICATION MARK ON PRODUCT:
- HALOGEN FREE PRODUCT IDENTIFICATION LOGO ON PACKAGING:



RECOMMENDED PCB LAYOUT
TOP VIEW ; TOL.±0.05



RECOMMENDED PLUG(TOL.±0.05)
ø3.5 4-POLE PLUG



K	MYLAR 2	1	KAPTON 0.06T	YELLOW
J	MYLAR 1	1	KAPTON 0.08T	YELLOW
I	SHELL	1	C2680 0.2t	Ni 60u"Min.
H	SEPARATOR	1	LCP+30%GF, E130i UL 94V-0	BLACK
G	MAKE TERMINAL	1	C5210-EH 0.2t	GOLD FLASH ON CONTACT AREA; GOLD FLASH ON SOLDER AREA; ALL OVER 50u" IN.
F	TRANSFER TERMINAL	1	C5210-EH 0.2t	
E	TIP SPRING	1	C5210-EH 0.2t	
D	RING A	1	C5210-EH 0.2t	
C	RING B	1	C5210-EH 0.2t	
B	EARTH	1	C5210-EH 0.2t	
A	BODY	1	PA4T+30% GF (TX1) UL 94V-0	PANTONE COOL GRAY 4C
NO	DESCRIPTION	QTY	MATERIAL	PLATING & COLOR

UNLESS OTHERWISE SPECIFIED TOLERANCES

Singatron Enterprise Co., Ltd.
信音企業股份有限公司

DECIMALS:	ANGLES:	TITLE	3.5ø PHONE JACK	
X : ±0.5	X : ±2°	DWN Ming	PART NO. 2SJ3095-12311F	
X.X : ±0.3	X.X : ±1°	CHKD Bruce	SCALE 4:1	UNIT: mm
X.XX : ±0.2		APVD Lussen	SIZE: A3	SHEET: 1 OF 1
REV: A				
CUSTOMER COPY				