

REV.	ECN NO OR DESCRIPTION	REVISED	DATE
A	PDR NO: T170307-3A/3B	Peng	2017.11.20

SPECIFICATIONS:

- ELECTRICAL CHARACTERISTICS:
 - 1-1. RATING: 12V 1A
 - 1-2. CONTACT RESISTANCE: 50mΩ MAX.(INITIAL)
 - 1-3. DIELECTRIC WITHSTANDING VOLTAGE: 500V AC FOR ONE MINUTE.
 - 1-4. INSULATION RESISTANCE: 100MΩ MIN. MEASURED BY 500 VDC.
- LIFE TEST: 2,000 CYCLES MIN.
AFTER LIFE TEST, CONTACT RESISTANCE: 100mΩ MAX.
- MECHANICAL CHARACTERISTICS:
 - 3-1. BEFORE LIFE TEST: INSERTION FORCE: 0.8-3.0 Kgf, EXTRACTION FORCE: 0.6-1.8 Kgf,
 - 3-2. AFTER LIFE TEST: INSERTION FORCE: 2.5 Kgf MAX, EXTRACTION FORCE: 0.5 Kgf MIN,
- PACKAGING : TAPE & REEL.
- AFTER HUMIDITY TEST, INSULATION RESISTANCE: 50MΩ MIN.
- TO CONFORM TO SINGATRON HAZARDOUS SUBSTANCE FREE SPEC.
- HALOGEN FREE PRODUCT IDENTIFICATION MARK ON PRODUCT:
- HALOGEN FREE PRODUCT IDENTIFICATION LOGO ON PACKAGING:
- FOR LEAD-FREE PROCESS.
- PRINTED DATE CODE "MMDD-" ON TOP OF CONNECTOR.

SEE "Table"

2SJ3095-165111F	GOLD FLASH ON CONTACT AREA;
2SJ3095-165211F	Au 30u" ON CONTACT AREA;

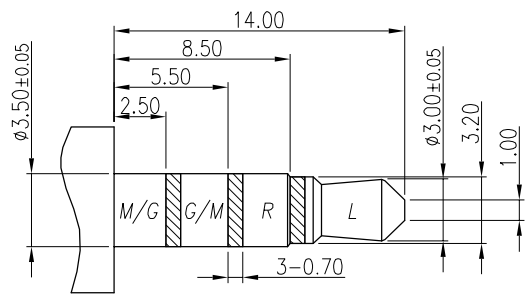
NO	DESCRIPTION	QTY	MATERIAL	PLATING & COLOR
J	MYLAR	1	0.06t	BLACK
I	SHELL	1	BRASS 0.2t	Ni 60u"Min.
H	SEPARATOR	1	HIGH TEMP.THERMOPLASTIC UL 94V-0	BLACK
G	MAKE TERMINAL	1	PHOSPHOR BRONZE 0.2t	GOLD FLASH ON CONTACT AREA; GOLD FLASH ON SOLDER AREA; ALL OVER 50u" Ni.
F	TRANSFER TERMINAL	1	PHOSPHOR BRONZE 0.2t	SEE "Table" ON CONTACT AREA; Molte Sn80u" ON SOLDER AREA; ALL OVER 50u" Ni.
E	TIP SPRING	1	PHOSPHOR BRONZE 0.2t	SEE "Table" ON CONTACT AREA; GOLD FLASH ON SOLDER AREA; ALL OVER 50u" Ni.
D	RING A	1	PHOSPHOR BRONZE 0.2t	SEE "Table" ON CONTACT AREA;
C	RING B	1	PHOSPHOR BRONZE 0.2t	Molte Sn80u" ON SOLDER AREA; ALL OVER 50u" Ni.
B	EARTH	1	PHOSPHOR BRONZE 0.2t	ALL OVER 50u" Ni.
A	BODY	1	HIGH TEMP.THERMOPLASTIC UL 94V-0	BLACK

UNLESS OTHERWISE SPECIFIED TOLERANCES

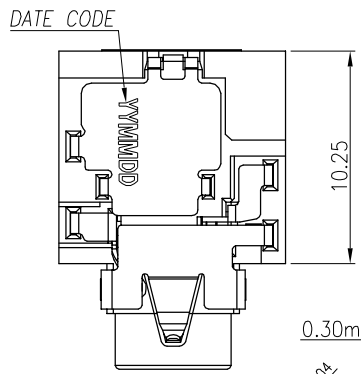
Singatron Enterprise Co., Ltd.
信音企業股份有限公司

DECIMALS:	ANGLES:	TITLE	3.5φ PHONE JACK	
X : ±0.5	X : ±2°	DWN	Peng	PART NO. 2SJ3095-165X11F
X.X : ±0.3	X.X : ±1°	CHKD	Bruce	SCALE 4:1 UNIT: mm
X.XX : ±0.2		APVD	Lussen	SIZE: A3 SHEET: 1 OF 1 REV: A

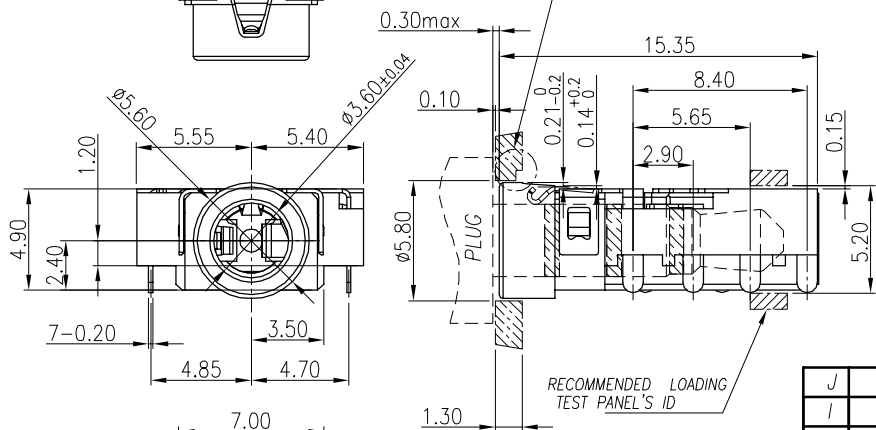
CUSTOMER COPY



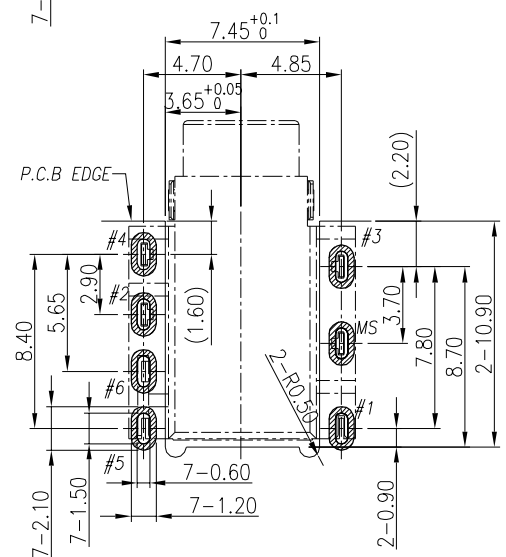
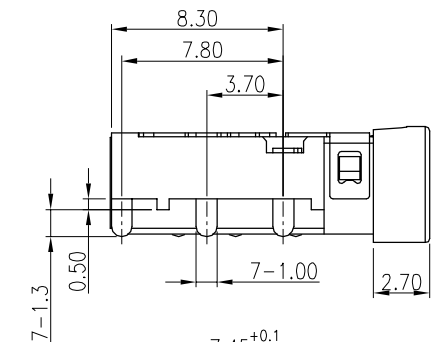
RECOMMENDED PLUG(TOL.±0.05)
φ3.5 4-POLE PLUG



MATCHED MECHANISM'S ID NEED TO AVOID INTERFERENCE WITH TERMINAL AFTER PLUG IN



RECOMMENDED LOADING TEST PANEL'S ID



RECOMMENDED PCB LAYOUT
TOP VIEW ; TOL.±0.05

