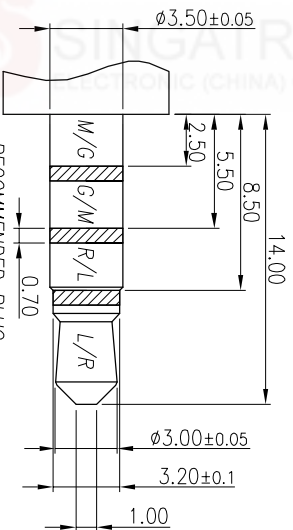
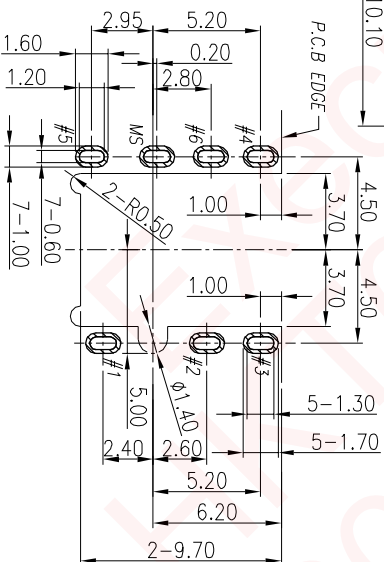
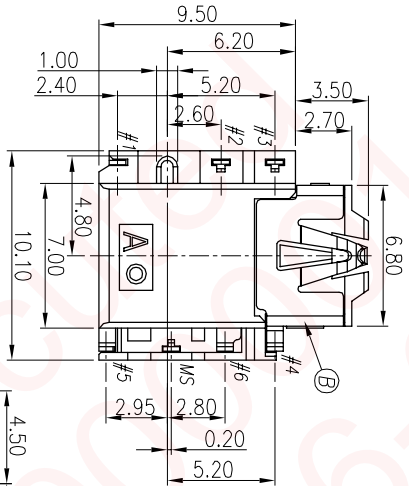
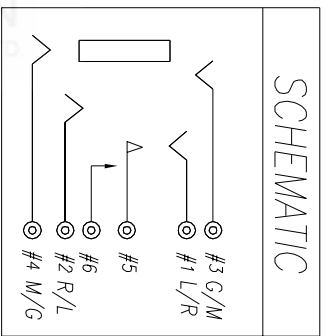
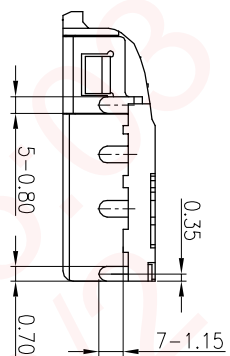
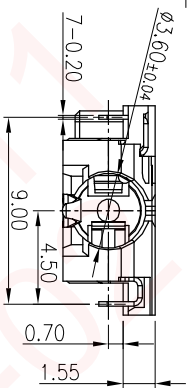
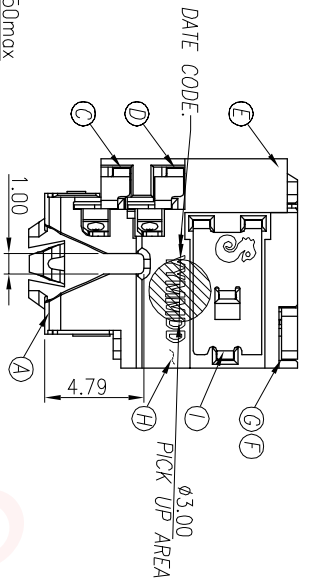
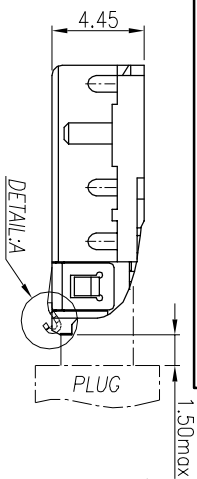


PRODUCT APPLICATION:
THE SPRING WORKING
POSITION WHEN PLUG-IN



RECOMMENDED PLUG
Ø3.5 4-POLE STANDARD PLUG

RECOMMENDED PCB LAYOUT
TOP VIEW : TOL.±0.05

SPECIFICATIONS:

- INSULATION RESISTANCE BETWEEN ANY ADJACENT OPEN CIRCUIT TERMINAL SHELL NOT BE LESS THAN 100MΩ MEASURED BY 500 VDC.
- CONTACT RESISTANCE: 50mΩ MAX(INITIAL).
- INSULATION VOLTAGE WITHSTAND:500V AC FOR ONE MINUTE.
- UNLESS OTHERWISE SPECIFIED, TEST IS TO BE MADE AT 5-35°C IN TEMPERATURE AND 45-85% IN HUMIDITY, BUT IF ANY VAGUE DATA IS OCCURED ON TEST RESULT, ANOTHER TEST SHALL BE MADE AT 20°C±2°C IN TEMP., 60-70% IN HUMIDITY.
- LIFE TEST: 5,000 CYCLES MIN.
- INSERTION FORCE: 0.3 - 3kg.
- WITHDRAWAL FORCE: 0.2 - 3kg.
- AFTER LIFE TEST, CONTACT RESISTANCE: 100mΩ MAX.
- AFTER HUMIDITY TEST, INSULATION RESISTANCE: 50MΩ MIN.
- MARKING: MARK "S" ON TOP OF CONNECTOR.
- PACKING : TAPE & REEL.
- TO CONFORM TO SINGATRON HAZARDOUS SUBSTANCE FREE SPEC.
- HALOGEN FREE PRODUCT IDENTIFICATION MARK ON PRODUCT.
- HALOGEN FREE PRODUCT IDENTIFICATION LOGO ON PACKAGING.

NO	DESCRIPTION	QTY	MATERIAL	PLATING & COLOR
I	SHELL	1	SUS304-1/2H 0.2t	Ni 60u Mn.
H	SEPARATOR	1	LCP E130I	BLACK
G	TRANSFER TERMINAL	1	C5210-EH 0.2t	GOLD FLUSH ON CONTACT AREA GOLD FLUSH ON SOLDER AREA ALL OVER 50u" Ni.
F	MAKE TERMINAL	1	C5210-EH 0.2t	GOLD FLUSH ON CONTACT AREA Hole 500u" ON SOLDER AREA ALL OVER 50u" Ni.
E	TIP SPRING	1	C5210-EH 0.2t	40u" ON CONTACT AREA
D	RING A	1	C5210-EH 0.2t	Hole 500u" ON SOLDER AREA
C	RING B	1	C5210-EH 0.2t	ALL OVER 50u" Ni.
B	EARTH	1	C5210-EH 0.2t	
A	BODY	1	PA4T (TX1)U94V-0	BLACK

UNLESS OTHERWISE SPECIFIED TOLERANCES

DECIMALS: ANGLES:

X :±0.5 X :±2
X.X :±0.3 X.X :±1
X.XX :±0.2

REV.	EGN NO	OR DESCRIPTION	REVISED	DATE
A	PDR NO:T141222-4A		Owen	2014.12.25

Singatron Enterprise Co., Ltd.
信亨企業股份有限公司

TITLE: 3.5Ø PHONE JACK
DWG: Owen
CHKD: Bruce
APVD: Lussen

PART NO.2S3108-038111F
SCALE: 4:1
SIZE: A3

SHEET: 1 OF 1
REV: A

CUSTOMER COPY