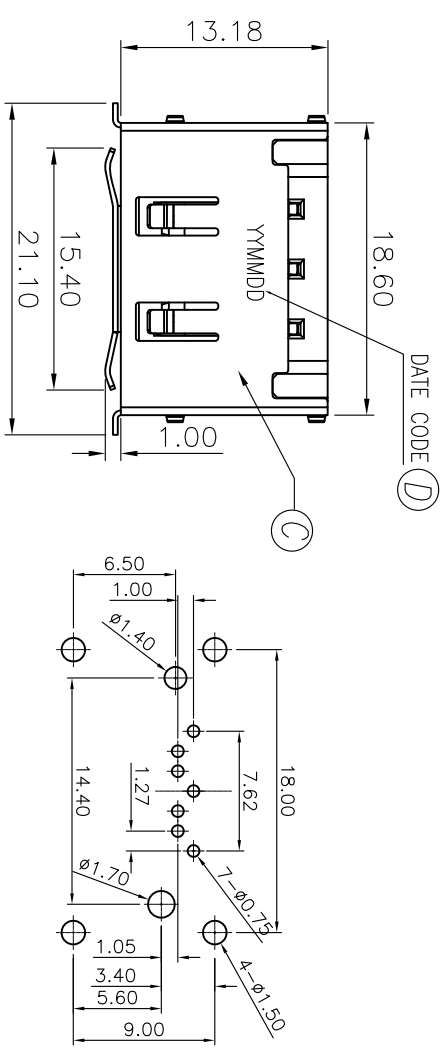


REV. ECN NO. OR DESCRIPTION	REVISED	DATE
A PDR RELEASE	IVY-C	2012.08.21



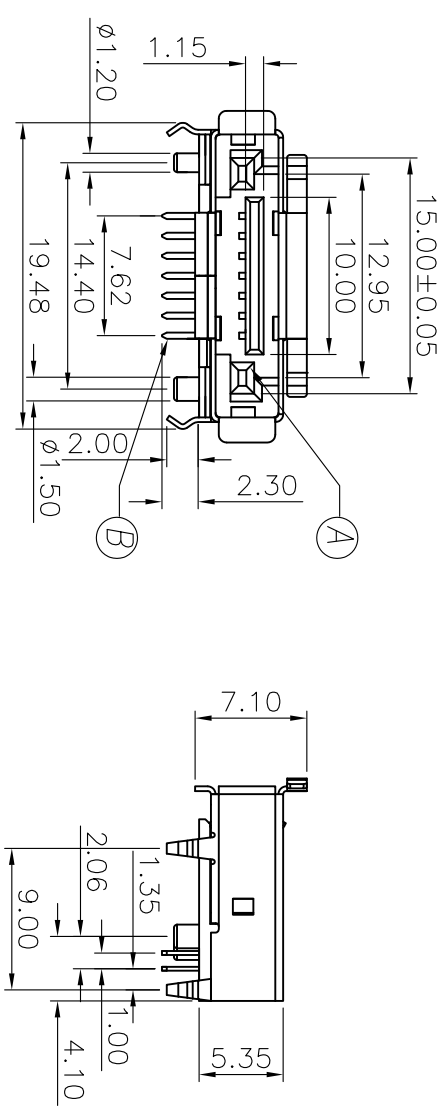
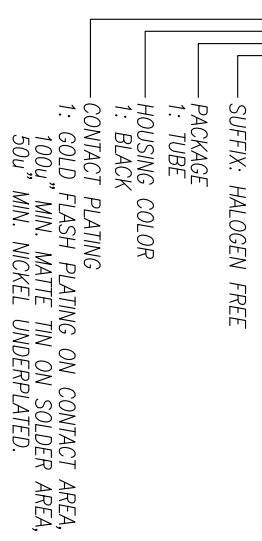
RECOMMENDED PCB LAYOUT(TOP VIEW)

SPECIFICATIONS:

- ELECTRICAL CHARACTERISTICS:
 - CURRENT RATING(POWER SEGMENT): 1.5 AMP. MAX.
 - CONTACT RESISTANCE: 30mΩ MAX.
 - INSULATION RESISTANCE: 1000MΩ MIN. @ 500V DC.
 - DIELECTRIC WITHSTANDING VOLTAGE: 500V AC FOR 1 MINUTE.
- MECHANICAL CHARACTERISTICS:
 - INSERTION FORCE: 45N MAX.
 - WITHDRAWAL FORCE: 10N MIN.
 - LIFE TEST: 500 CYCLES.
 - OPERATING TEMPERATURE: -25°C~+85°C
 - TO CONFORM TO THE SINGATRON HAZARDOUS SUBSTANCE FREE SPEC.
 - HALOGEN FREE PRODUCT IDENTIFICATION LABEL ON PACKAGING:
 - PACKAGE: SEE "2ST1525 SERIES" PACKAGE.
 - FOR REFLOW SOLDERING LEAD-FREE PROCESS.

PART NO.

2ST1525-000111F



NO	DESCRIPTION	QTY	MATERIAL	PLATING & COLOR
D	INK	1		BLACK
C	SHIELD	1	COPPER ALLOY	NICKEL
B	CONTACT	7	COPPER ALLOY	SEE PART NO.
A	HOUSING	1	HIGH TEMP. THERMOPLASTIC UL 94V-0	BLACK

UNLESS OTHERWISE SPECIFIED TOLERANCES

Singatron Enterprise Co., Ltd.
信音企業股份有限公司

DECIMALS:	ANGLES:	TITLE	ESATA 7P PLUG, REVERSE, R/A, DIP TYPE, H=5.35
X : ±0.5	X : ±2°	DWN	REV. C 2012.08.21
X.X : ±0.3	X.X : ±1°	CHKD	REV. F 2012.08.21
X.XX : ±0.2		APVD	REV. H 2012.08.21

CUSTOMER COPY

