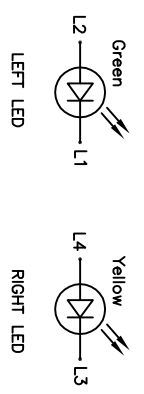


Emitting Color	λp (nm)	Vf @ If=20mA	If @ Vf=5V
Green	565	1.7V~2.6V	10μA max.
Yellow	585	1.7V~2.6V	10μA max.

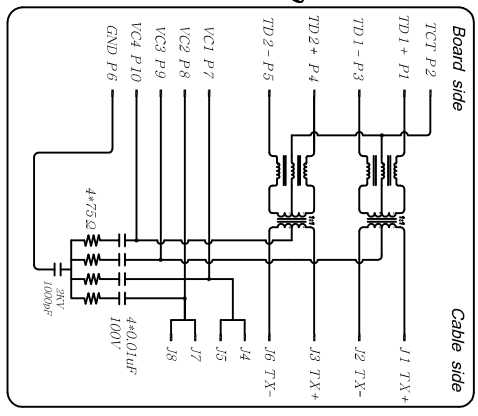
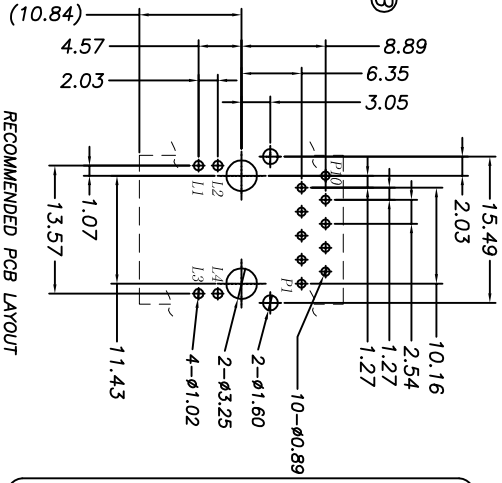
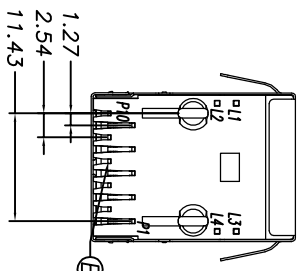
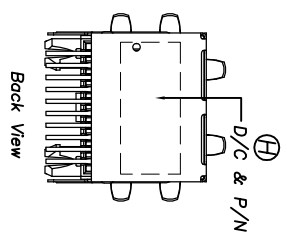
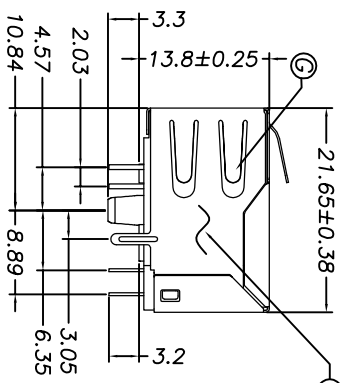
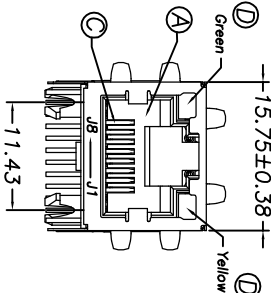


PART NO.
271582-020111F

- SUFFIX: HALOGEN FREE
- PACKAGE: 1: TRAY
- HOUSING COLOR: 1: BLACK
- CONDUCT PLATING: 1: 150μ" Au PLATED ON CONTACT AREA, 100μ" TIN PLATED ON SOLDER AREA, 30~50μ" NICKEL UNDERPLATED OVERALL

- SPECIFICATION:
- TO CONFORM TO SINGATRON HAZARDOUS SUBSTANCE FREE SPEC.
 - GREEN PRODUCT IDENTIFICATION LABEL ON PACKAGING:
 - PACKAGE: SEE "271582-020111F" PACKAGE
 - FOR REFLOW SOLDERING LEAD-FREE PROCESS.
 - MATES WITH MODULAR PLUG CONFORMING TO FCC PART 69 SUBPART F
 - ELECTRICAL:
 - INSULATION RESISTANCE: 500 MOHMS MIN
 - INSULATIC WITHSTANDING VOLTAGE: 1500 VAC FOR 1 MINUTE
 - DURABILITY TEST RATING:
 - INSERTION FORCE WITH THE LATCH DEPRESSED :22N MAX
 - REMOVAL FORCE WITH THE LATCH DEPRESSED :44N MAX
 - DURABILITY :750 CYCLES
 - OPERATING AND STORAGE TEMPERATURE:
 - OPERATING TEMPERATURE : -40°C TO +95°C
 - STORAGE TEMPERATURE : -40°C TO +95°C

- ELECTRICAL CHARACTERISTICS :
- INSERTION LOSS :
 - 1~100 MHZ -1.0dB MAX.
 - RETURN LOSS(LOAD 100Ω) :
 - 1~30 MHZ -18dB MIN
 - 30~60 MHZ -16dB MIN
 - 60~80 MHZ -12dB MIN
 - COMMON MODE REJECTION:
 - 1~100 MHZ -30dB MIN
 - GROSS TALK:
 - 1~100 MHZ -30dB MIN
 - INDUCTANCE @ 100KHZ, 0.1V, 8MA DC BIAS:
 - (P1-P3) : 350 nH MIN
 - HI-POT TEST: CABLE SIDE : 1500VAC 60S OR 2250VDC 60S
 - TURNS RATION 100KHZ:
 - (P1-P3) : (11~12) = 1:1 ±5%
 - (P4-P5) : (3~6) = 1:1 ±5%
 - OTHER GENERAL SPEC. TO REFER "271582 SERIES SPEC."



RECOMMENDED PCB LAYOUT
(COMPONENT SIDE VIEW)

REV.	ECN NO OR DESCRIPTION	REVISED	DATE
A	PDR RELEASE	INV-C	2014.08.20

I	BASE	2	HIGH TEMP THERMOPLASTIC UL 94V-0	BLACK
H	INK	-	INK	BLACK
G	OUTER SHELL	1	STAINLESS STEEL	TIN PLATED ON SOLDER AREA
F	INSERT MOLD	1	HIGH TEMP THERMOPLASTIC UL 94V-0	BLACK
E	PCB	1		
D	LED	2	LED	GREEN/ YELLOW
C	OUTPUT CONTACT	8	COPPER ALLOY	SEE PART NO.
B	INPUT CONTACT	10	COPPER ALLOY	TIN PLATED
A	HOUSING	1	HIGH TEMP THERMOPLASTIC UL 94V-0	BLACK
NO	DESCRIPTION	QTY	MATERIAL	PLATING & COLOR

UNLESS OTHERWISE SPECIFIED TOLERANCES

DECIMALS: ANGLES:

X :±0.5 X :±2

X.X :±0.3 X.X :±1'

X.XX :±0.2

Singatron Enterprise Co., Ltd.
信亨企業股份有限公司

TITLE	R445, W/LED, W/MAGNETIC, R/A, W/SHIELD, DIP TYPE
DRAWN	INV-C 2014.08.20 PART NO. 271582-020111F
CHKD	SCALE:2.5:1 UNIT: mm
APVD	ANG:120°(4.0/2.0) SIZE: A3 SHEET:1 OF 1 REV: A

CUSTOMER COPY

