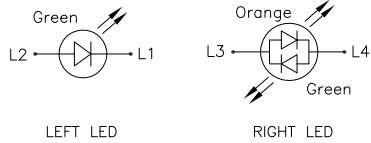
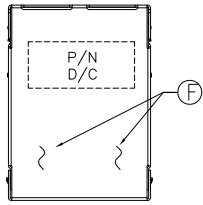


REV.	ECN NO OR DESCRIPTION	REVISED	DATE
A	PDR RELEASE	EVEN	2021.01.11
B	ECN NO: L202106-C02	EVEN	2021.07.20



Emitting Color	λ_p (nm)	V_f @ $I_f=20mA$	I_r @ $V_r=5V$
Green	565	1.7V~2.6V	10 μ A max.
Orange	610	1.7V~2.6V	10 μ A max.

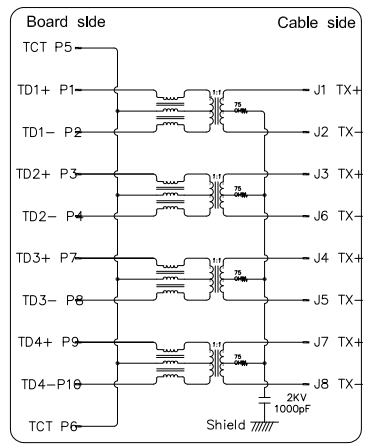
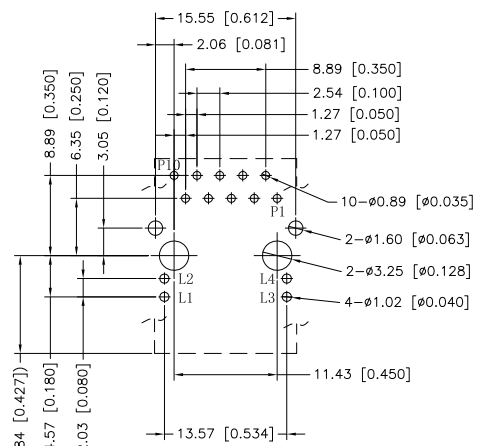
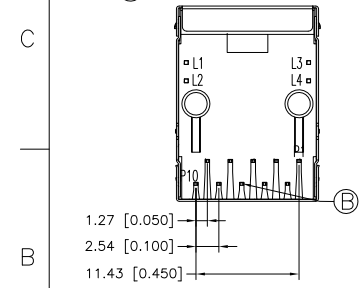
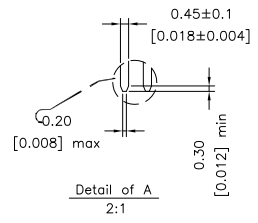
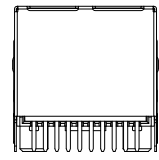
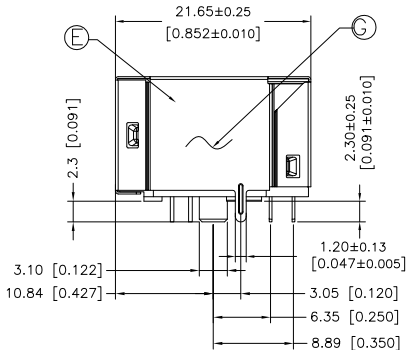
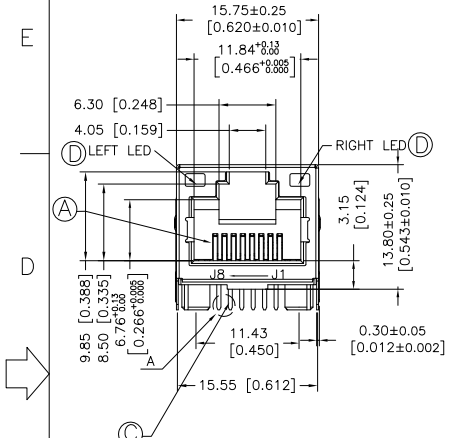
PART NO.
2TJ1610-008111F

SUFFIX: HALOGEN FREE
PACKAGE
1: TRAY
HOUSING COLOR
1: BLACK
CONTACT PLATING
1: GOLD FLASH PLATED ON CONTACT AREA
100 μ TIN PLATED ON SOLDER AREA
30 μ NICKEL UNDERPLATED OVERALL

- SPECIFICATION:**
- TO CONFORM TO SINGATRON HAZARDOUS SUBSTANCE FREE SPEC.
 - GREEN PRODUCT IDENTIFICATION LABEL ON PACKAGING:
 - PACKAGE: SEE "2TJ1610-008111F" PACKAGE.
 - FOR REFLOW SOLDERING LEAD-FREE PROCESS.
 - MATES WITH MODULAR PLUG CONFORMING TO FCC PART 68, SUBPART F.
 - ELECTRICAL
 - CURRENT RATING: 1.5 A
 - INSULATION RESISTANCE: 500 MOHMS MIN
 - DIELECTRIC WITHSTANDING VOLTAGE: 1500 VAC FOR 1 MINUTE
 - DURABILITY TEST RATING
 - INSERTION FORCE WITH THE LATCH DEPRESSED : 21N MAX
 - REMOVAL FORCE WITH THE LATCH DEPRESSED : 44N MAX
 - DURABILITY : 5000 CYCLES
 - OPERATING AND STORAGE TEMPERATURE
 - OPERATING TEMPERATURE : 0°C TO +70°C
 - STORAGE TEMPERATURE : -40°C TO +85°C

ELECTRICAL CHARACTERISTICS :

- INSERTION LOSS :
 - 1~100 MHz -1.0dB MAX.
 - RETURN LOSS(LOAD 100 Ω) :
 - 1~30 MHz -18dB MIN
 - 30~60 MHz -16dB MIN
 - 60~80 MHz -12dB MIN
 - 80~100 MHz -10dB MIN
 - COMMON MODE REJECTION
 - 1~100 MHz -30dB MIN
 - CROSS TALK
 - 1~100 MHz -30dB MIN
 - INDUCTANCE @ 100KHz, 0.1V, 8mA DC BIAS
 - (P1-P2),(P3-P4),(P7-P8),(P9-P10) : 350 uH MIN
 - HI-POT TEST
 - PCB SIDE TO CABLE SIDE : 1500VAC 60S OR 2250VDC 60S
 - URNS RATION 100KHz
 - (P1-P2) : (J1-J2) = 1:1 \pm 3%
 - (P3-P4) : (J3-J6) = 1:1 \pm 3%
 - (P7-P8) : (J4-J5) = 1:1 \pm 3%
 - (P9-P10) : (J7-J8) = 1:1 \pm 3%
9. OTHER GENERAL SPEC. TO REFER "2TJ1610-008111F SPEC".



G	PCB	1	
F	CASE	1	LCP UL 94V-0 BLACK
E	SHELL	1	SUS304-1/2H TIN PLATED ON SOLDER AREA
D	LED	2	LED GREEN/ GREEN/ORANGE
C	OUTPUT CONTACT	8	C5210 SEE PART NO.
B	INTPUT CONTACT	10	C2680 TIN PLATED
A	HOUSING	1	LCP UL 94V-0 BLACK
NO	DESCRIPTION	QTY	MATERIAL PLATING & COLOR

UNLESS OTHERWISE SPECIFIED TOLERANCES

信音科技(香港)有限公司

DECIMALS:	ANGLES:	TITLE	RJ45, W/LED, W/MAGNETIC, R/A, W/SHIELD, DIP TYPE		
X : ± 0.5	X : $\pm 2^\circ$	DWN	EVEN 2021.07.20	PART NO. 2TJ1610-008111F	
X.X : ± 0.3	X.X : $\pm 1^\circ$	CHKD		SCALE: 2.5:1	UNIT: mm
X.XX : ± 0.2		APVD	ANGELA2021.07.20	SIZE: A3	SHEET: 1 OF 1

REV: B

CUSTOMER COPY