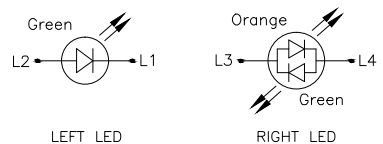
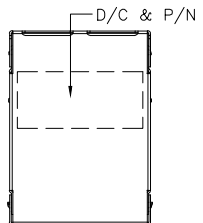


REV.	ECN NO OR DESCRIPTION	REVISED	DATE
A	PDR RELEASE	EVEN	2023.02.01



Emitting Color	λp (nm)	Vf @If=20mA	Ir @Vr=5V
Green	565	1.7V~2.6V	10μA max.
Orange	610	1.7V~2.6V	10μA max.

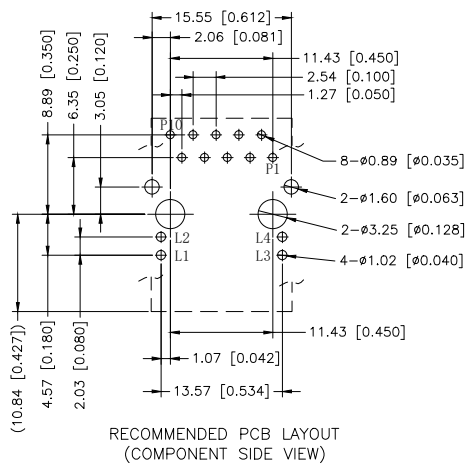
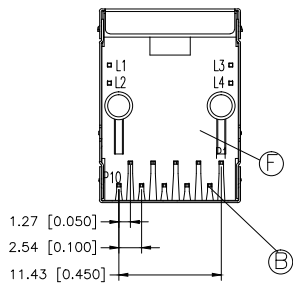
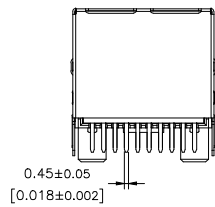
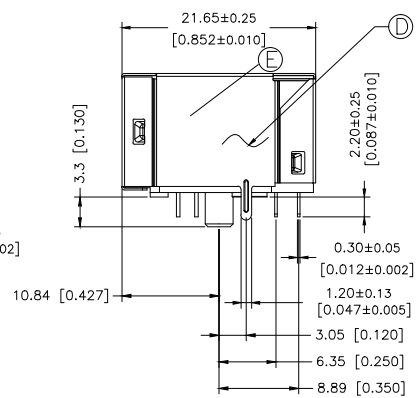
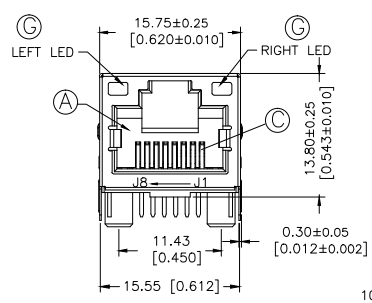
PART NO.
2TJ1670-001111H

- SUFFIX: HALOGEN
- PACKAGE 1: TRAY
- HOUSING COLOR 1: BLACK
- CONTACT PLATING 1: 6u" GOLD ON CONTACT AREA
100u" TIN PLATED ON SOLDER AREA.
30u" NICKEL UNDERPLATED OVERALL

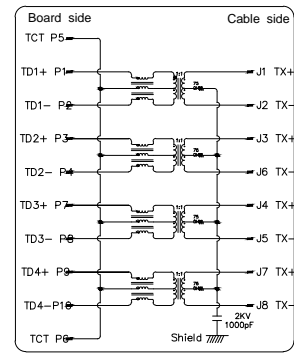
- SPECIFICATION:**
- TO CONFORM TO SINGATRON HAZARDOUS SUBSTANCE FREE SPEC.
 - HALOGEN FREE PRODUCT IDENTIFICATION LABEL ON PACKAGING:
 - PACKAGE: SEE "2TJ1670-000111H" PACKAGE.
 - FOR WAVE SOLDERING LEAD-FREE PROCESS.
 - MATES WITH MODULAR PLUG CONFORMING TO FCC PART 68, SUBPART F.
 - RJ45 SPECIFICATIONS
 - INSULATION RESISTANCE : 500 MOHMS MIN
 - DIELECTRIC WITHSTANDING VOLTAGE : 1500 VAC FOR 1 MINUTE
 - RATED CURRENT :1.5A
 - INSERTION FORCE WITH THE LATCH DEPRESSED :22N MAX
 - REMOVAL FORCE WITH THE LATCH DEPRESSED :44N MAX
 - DURABILITY :750 CYCLES
 - OPERATING AND STORAGE TEMPERATURE
 - OPERATING TEMPERATURE : 0°C TO +70°C
 - STORAGE TEMPERATURE : -40°C TO +85°C
 - OTHER GENERAL SPEC. TO REFER "2TJ1670-000111H SPEC".

ELECTRICAL CHARACTERISTICS :

- INSERTION LOSS :
 - 1~50MHz -0.5dB Max.
 - 50~125MHz -1.0dB Max.
- RETURN LOSS(LOAD 100Ω) :
 - 1~40 MHz -20dB MIN
 - 40~200 MHz -20+15*log(Freq MHz/40MHz) dB MIN
- REFLECTED CM TO DIFF CONVERSION(REF)
 - 10~125 MHz -45+Freq MHz/35MHz dB MIN
- CM TO CM ATTENUATION (REF)
 - 30~200MHz -25dB MIN
- CROSS TALK (REF)
 - 1~125MHz -30dB MIN
- OCL @ 100KHz, 0.1V, 8mA DC BIAS
 - (P1-P2),(P3-P4),(P7-P8),(P9-P10) : 150 uH MIN
- DCR
 - (J1-J2),(J3-J6),(J4-J5),(J7-J8) : 1.2Ω MAX
- HI-POT TEST
 - PCB SIDE TO CABLE SIDE : 1500VAC 60S OR 2250VDC 60S
- URNS RATION 100KHz
 - (P1-P2) : (J1-J2) = 1:1 ±%3
 - (P3-P4) : (J3-J6) = 1:1 ±%3
 - (P7-P8) : (J4-J5) = 1:1 ±%3
 - (P9-P10) : (J7-J8) = 1:1 ±%3



SCHEMATIC FOR RJ45:



NO	DESCRIPTION	QTY	MATERIAL	PLATING & COLOR
G	LED	2	GREEN/ORANGE;GREEN	
F	CASE	1	LCP UL 94V-0	BLACK
E	SHELL	1	SUS304	30u" NICKEL
D	PCB	1		
C	OUTPUT CONTACT	8	C5210	SEE PART NO.
B	INTPUT CONTACT	10	C2680	TIN PLATED
A	HOUSING	1	LCP UL 94V-0	BLACK
NO	DESCRIPTION	QTY	MATERIAL	PLATING & COLOR

UNLESS OTHERWISE SPECIFIED TOLERANCES				
DECIMALS:	ANGLES:	TITLE	RJ45 IMC,2.5G BASE-T,W/ LED	
X :±0.5	X :±2°	DWN	EVEN 2023.02.01 PART NO. 2TJ1670-000111H	
X.X :±0.38	X.X :±1°	CHKD	SCALE2.5:1	UNIT: mm
X.XX :±0.2		APVD	TERESA 2023.02.01	SIZE: A3 SHEET:1 OF 1 REV:A
CUSTOMER COPY				