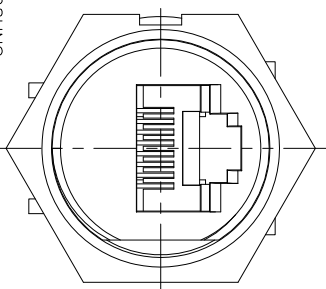
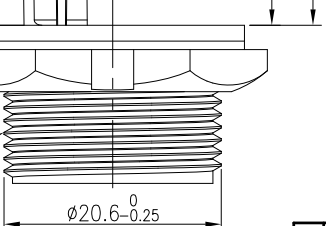
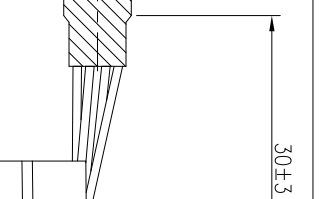
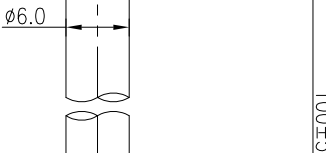
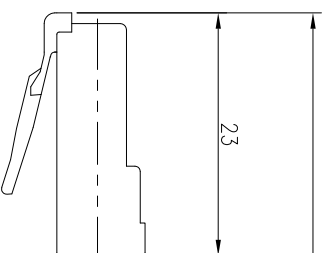
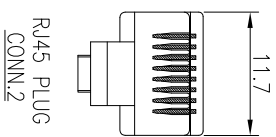
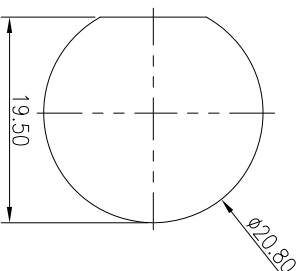
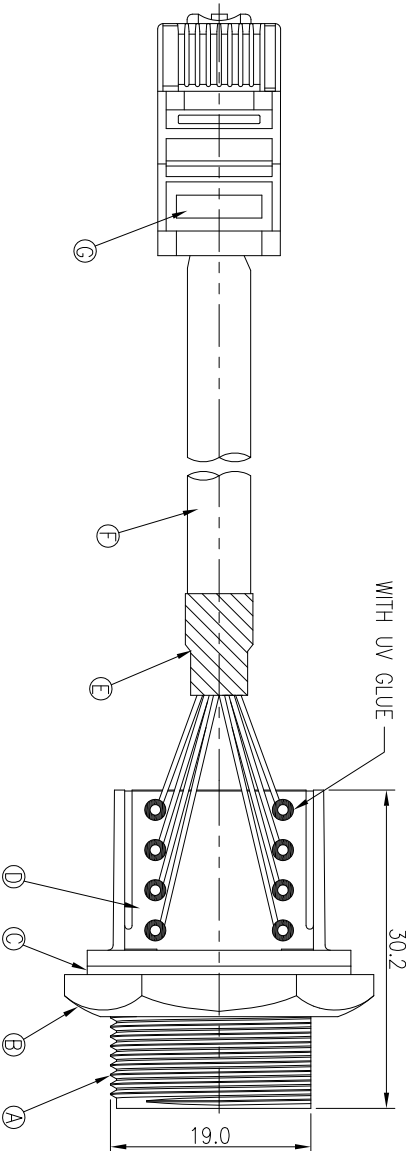


REV.	ECN NO	OR DESCRIPTION	REVISED	DATE
A	PDR NO.:S101202-8A	Shown	2010.12.16	

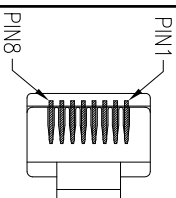
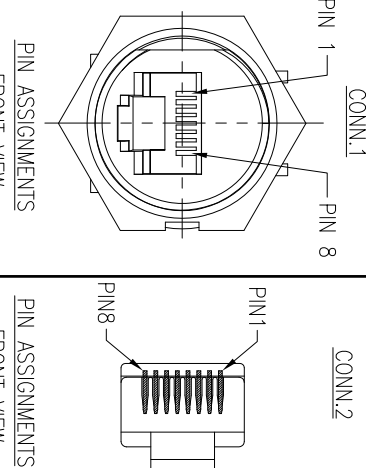


CONN.1
WATERPROOF RATE: IP67



RECOMMENDED PANEL CUT-OUT

- NOTES:
1. WATERPROOF RATE: IP67(WHEN PROPERLY MATED) IP67: IMMersed IN 1M WATER FOR 30 MINUTES
 2. RATING:125V 1.5A
 3. OTHER GENERAL SPEC. TO REFER "RJ45 SERIES SPEC".
 4. TO CONFORM TO SINGATRON HAZARDOUS SUBSTANCE FREE SPEC.
 5. GREEN PRODUCT IDENTIFICATION LABEL ON PACKAGING: **GR PASS**
 6. FOR PANEL THICKNESS MAX OF 3.5mm



8	ORANGE/WHITE	8	TWIST
7	ORANGE	7	TWIST
6	GREEN/WHITE	6	TWIST
5	BLUE	5	TWIST
4	BLUE/WHITE	4	TWIST
3	GREEN	3	TWIST
2	BROWN/WHITE	2	TWIST
1	BROWN	1	TWIST
PCB	WIRE COLOR	CONN	

G	RJ45 PLUG	1	8P8C	GOLD PLATED
F	CABEL	1	CAT5E FTP 24#*4P+WV+D +A/M UV RESISTANT	BLACK(PVC JACKET)
E	HEAT SHRINK TUBE	1	125° 300V L20	BLACK
D	PCB	1	FR-4	GREEN
C	GASKET	1	EPDM	BLACK
B	NUT	1	PPE	BLACK
A	HOUSING	1	PPE	BLACK
NO	DESCRIPTION	QTY	MATERIAL	PLATING & COLOR
UNLESS OTHERWISE SPECIFIED TOLERANCES				
Singatron Enterprise Co., Ltd. 信音企業股份有限公司				
TITLE RJ45 JACK + RJ45 PLUG				
DWG Shown PART NO.2TJ3003-W05106				
CHKD Steve SCALE 2:1 UNIT: mm				
APVD Max SIZE: A3 SHEET:1 OF 1 REV: A				

CUSTOMER COPY