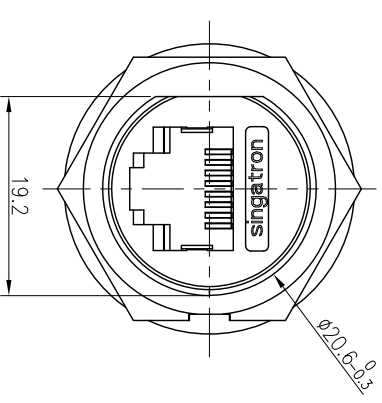
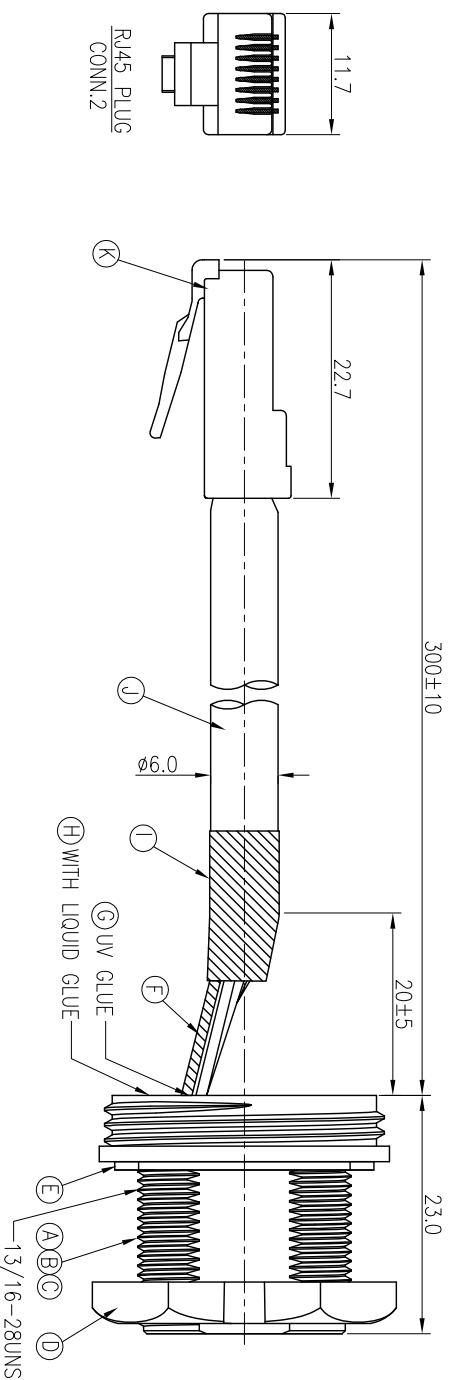


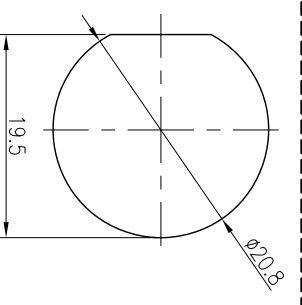
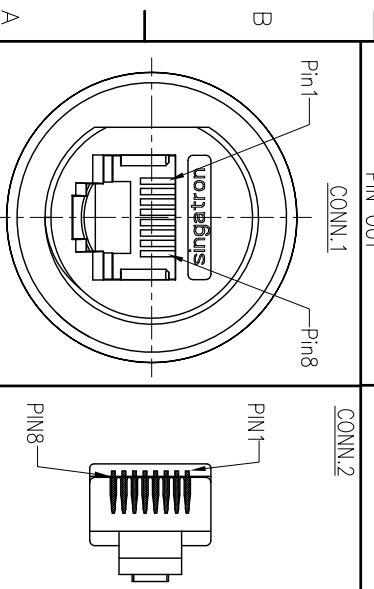
7		8	
REV.	ECN NO OR DESCRIPTION	REVISED	DATE
A	PDR NO.:T140717-1A	JF	2014.10.17




	DRAIN	SHELL	
/			
8	ORANGE/WHITE	8	
7	ORANGE	7	TWIST
6	GREEN/WHITE	6	
5	BLUE	5	TWIST
4	BLUE/WHITE	4	
3	GREEN	3	
2	BROWN/WHITE	2	TWIST
1	BROWN	1	
CONN.2	WIRE COLOR	CONN.1	

NOTES:

1. WATERPROOF RATE: IP67  
IP67: IMMERSED IN 1M WATER FOR 30 MINUTES
2. RATING:125V 1.5A
3. TEMPERATURE RANGE:-20°C TO +80°C
4. OTHER GENERAL SPEC. TO REFER "RJ45 SERIES SPEC".
5. TO CONFORM TO SINGAPORE HAZARDOUS SUBSTANCE FREE SPEC.
6. GREEN PRODUCT IDENTIFICATION LABEL ON PACKAGING:
7. FOR PANEL THICKNESS MAX OF 5.5mm



K	RJ45 PLUG	1	8P8C	GOLD PLATING
J	CABEL	1	CA15E FTP 24#*4P+MY+D +A/M UV RESISTANT	BLACK(PVC JACKET)
I	TUBE	1	ø6.0 125°C 300V L=15	BLACK
H	LIQUID GLUE	1	N/A	BLACK
G	UV GLUE	1	N/A	N/A
F	TUBE	1	ø1.0 125°C 300V L=20	BLACK
E	GASKET	1	EPDM	BLACK
D	NUT	1	NYLON+30%GF	BLACK
C	SCREW	1	SUS 304	N/A
B	RJ45+PCB	1	N/A	N/A
A	HOUSING	1	NYLON+30%GF 94V-0	BLACK
NO	DESCRIPTION	QTY	MATERIAL	PLATING & COLOR
UNLESS OTHERWISE SPECIFIED TOLERANCES		 Singapore Enterprise Co., Ltd. 信普企業股份有限公司		

DECIMALS:	ANGLES:	TITLE R145 JACK + PLUG			
X :±0.5	X :±2°	DWN	JF	PART NO. 27J3003-W05175H	
X.X :±0.3	X.X :±1°	CHKD	Vicky	SCALE 2:1	UNIT: mm
X.XX :±0.2		APVD	Harlen	SIZE: A3	SHEET: 1 OF 1
				REV: A	

## PIN ASSIGNMENTS

### FRONT VIEW

RECOMMENDED PANEL CUT-OUT

CONN.1  
WATERPROOF RATE: IP67