

RJ45 PLUG
CONN.2

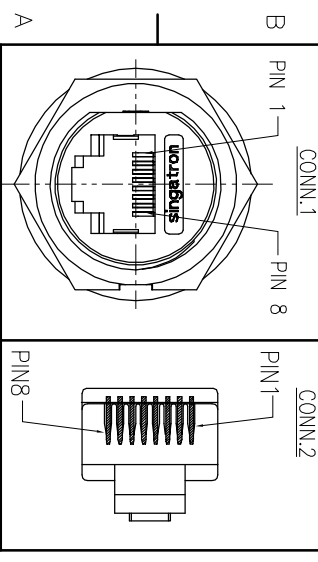
CONN.1
WATERPROOF RATE: IP67

SHIELD	DRAIN	SHIELD
1	ORANGE/WHITE	1
2	ORANGE	2
3	GREEN/WHITE	3
4	BLUE	4
5	BLUE/WHITE	5
6	GREEN	6
7	BROWN/WHITE	7
8	BROWN	8
CONN.1 WIRE COLOR		CONN.2

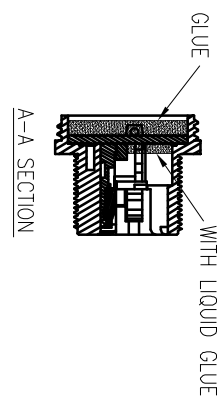
PIN DEFINE

CONN.1

CONN.2



PIN ASSIGNMENTS
FRONT VIEW



A-A SECTION

- NOTES:
1. WATERPROOF RATE: IP67
IP67: IMMERSED IN 1M WATER FOR 30 MINUTES
 2. RATING: 125V 1.5A
 3. OTHER GENERAL SPEC. TO REFER "RJ45 SERIES SPEC."
 4. TO CONFORM TO SINGATRON HAZARDOUS SUBSTANCE FREE SPEC.
 5. GREEN PRODUCT IDENTIFICATION LABEL ON PACKAGING:
 6. FOR PANEL THICKNESS MAX OF 5.5mm

REV.	ECN NO.	OR DESCRIPTION	REVISED	DATE
A	PDR NO.:S161020-3A		Yong	2017.12.29
B	ECN NO.:S202208-C21		Erod	2022.10.19

M	TUBE	1	125°C 600V	WHITE
K	TUBE	1	ø1.0 125°C 300V	BLACK
J	RJ45 PLUG	1	8P8C SHIELD	GOLD PLATING
I	CABEL	1	CAT5E FTP 24#*4P+MY+D +A/M UV RESISTANT	BLACK(PVC JACKET)
H	TUBE	2	ø7.0 125°C 300V	BLACK
G	LIQUID GLUE	2	N/A	BLACK
F	SCREW	1	STAINLESS STEEL	N/A
E	GASKET	1	EPDM	BLACK
D	NUT	1	NYLON+GF	BLACK
C	GROUND	2	BRASS	NICKEL PLATING
B	RJ45	1	N/A	GOLD PLATING
A	HOUSING	1	NYLON+GF	BLACK
NO	DESCRIPTION	QTY	MATERIAL	PLATING & COLOR

UNLESS OTHERWISE SPECIFIED TOLERANCES

Suzhou Singatron Auto Electronics CO.,LTD.
蘇州信音汽車電子有限公司

DECIMALS:	ANGLES:	TITLE
X : ±0.5	X : ±2°	RJ45 FRONT MOUNT CONN.+PLUG
XX : ±0.3	XX : ±1'	
X:XX : ±0.2		

CHKD	Jun	SCALE 2:1	UNIT: mm	REV: B
APVD	Steve	SIZE: A3	SHEET: 1 OF 1	

CUSTOMER COPY