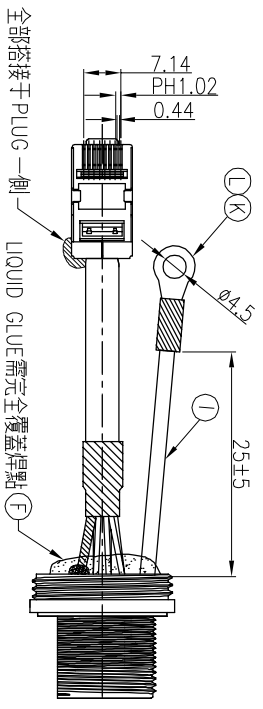
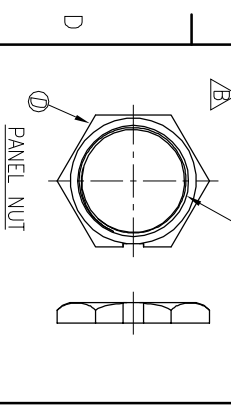
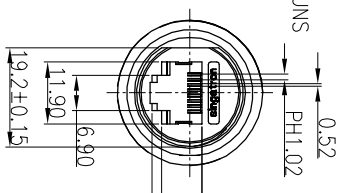
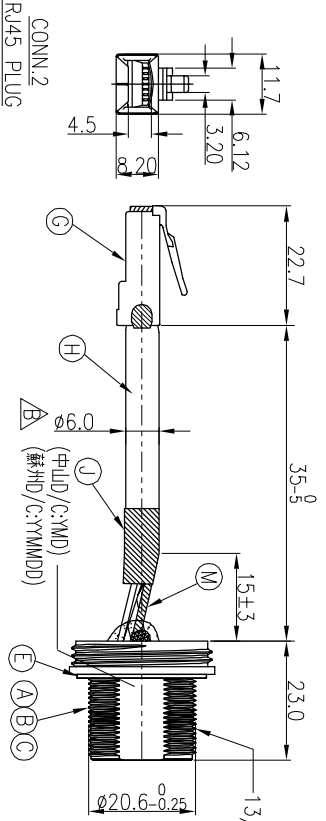
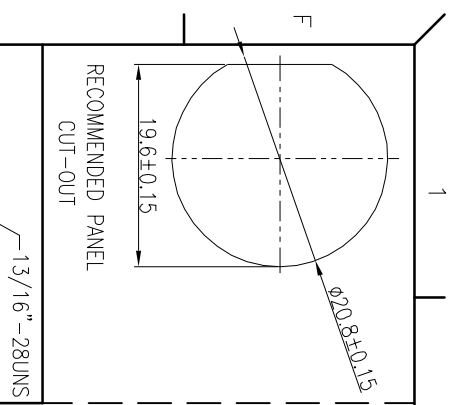
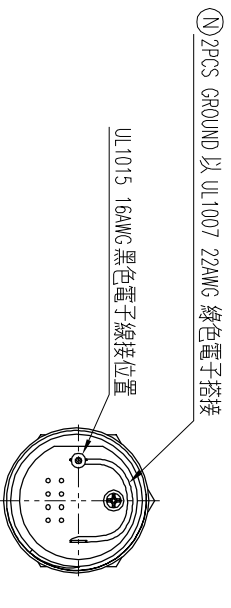
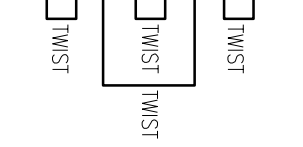


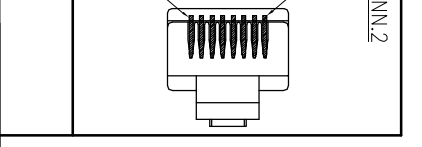
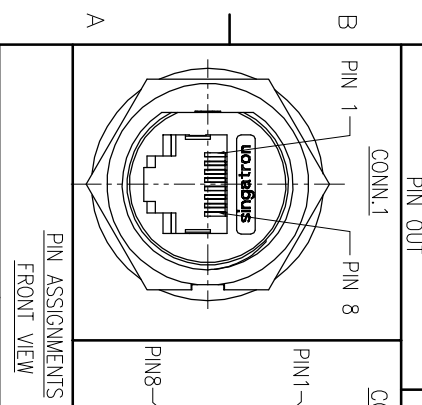
REV.	ECN NO OR DESCRIPTION	REVISED	DATE
A	PDR NO.:C200109-1A	JAY	2021.05.18
B	ECN NO.:S202305-C17	JAY	2023.05.31



SHIELD	DRAIN+BRAID	SHIELD
8	BROWN	8
7	BROWN/WHITE	7
6	GREEN	6
5	BLUE/WHITE	5
4	BLUE	4
3	GREEN/WHITE	3
2	ORANGE	2
1	ORANGE/WHITE	1



NOTES:
 1. WATERPROOF RATE: IP67
 IP67: IMMERSED IN 1M WATER FOR 30 MINUTES
 2. ELECTRICAL CHARACTERISTICS:
 2-1. RATING:125V 1.5A
 2-2. CONTACT RESISTANCE: 3 ohm MAX.(INITIAL)
 2-3. DIELECTRIC WITHSTANDING VOLTAGE: 300V AC FOR ONE MINUTE
 2-4. INSULATION RESISTANCE: 50Mohm MIN. MEASURED BY 500 VDC
 3. TEMPERATURE RANGE:
 -40°C To +105°C(ONLY FOR PANEL CONN. & CABLE)
 4. OTHER GENERAL SPEC. TO REFER "RJ45 SERIES SPEC."
 5. TO CONFORM TO SINGAPOUR HAZARDOUS SUBSTANCE FREE SPEC.
 6. GREEN PRODUCT IDENTIFICATION LABEL ON PACKAGING: **GREEN**
 7. FOR PANEL THICKNESS MAX OF 5.5mm
 8. Torque Force: 1.0 ~1.2 Nm
 9. MECHANICAL CHARACTERISTICS:
 9-1. Insertion and withdrawal: 30 N maximum
 9-2. Durability 750 Cycles
 10. NUT attachment package shipped



UNLESS OTHERWISE SPECIFIED TOLERANCES

DECIMALS: ANGLES:
 X :±0.5 X :±2°
 XX :±0.3 XX :±1°
 XXX :±0.2

ITEM	DESCRIPTION	QTY	MATERIAL	PLATING & COLOR
N	WIRE	1	UL 1007 22AWG	GREEN
M	HEAT SHINK TUBE	1	Ø1.0 125°C 300V	BLACK
L	HEAT SHINK TUBE	1	Ø4.5 125°C 300V	BLACK
K	O-TERMINAL	1	ID4.5 Ø8.0	TIN PLATED
J	HEAT SHINK TUBE	1	Ø7.0 125°C 300V	BLACK
I	WIRE	1	UL 1015 16AWG	BLACK
H	CABLE	1	CAT5E FTP 24AWG+4P+HW+D+4A/M UV RESISTANT(-40°C~105°C) WM-1	BLACK(PVC JACKET)
G	RJ45 PLUG	1	8P8C SHIELD	Au 50u" ON CONTACT AREA
F	LIQUID GLUE	1	N/A	BLACK
E	GASKET	1	SILICON(SHIN-ETSU KE5612)	DARK GRAY
D	PANEL NUT	1	PA66+GF	BLACK
C	SCREW	1	STAINLESS STEEL	N/A
B	RJ45+PCB	1	CAT.5e	Au 50u" ON CONTACT AREA
A	BODY	1	PA66+GF	BLACK