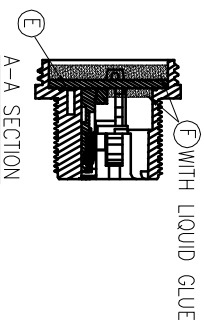


1	ORANGE/WHITE	8	TWIST
2	ORANGE	7	TWIST
3	GREEN/WHITE	6	TWIST
4	BLUE	5	TWIST
5	BLUE/WHITE	4	TWIST
6	GREEN	3	TWIST
7	BROWN/WHITE	2	TWIST
8	BROWN	1	TWIST
CONN.1 WIRE COLOR		CONN.2	
PIN DEFINE			
CONN.1		CONN.2	

Singatron P/N	PDR NO.	L	物料号
21J3003-W051P1H	A201230-2D	120mm	DRM



WATERPROOF RATE: IP67

CONN.1

L	TUBE	2	125°C 600V	WHITE
K	UV GLUE	1	N/A	NATURAL
J	TERMINAL	8	JWT A2501TOP-00	GOLD PLATING
I	HOUSING	1	JWT A2512H00-8P	WHITE
H	CABEL	1	CAISE FTP 24AWG+4P+M*+D +A/M UV RESISTANT	BLACK(PVC JACKET)
G	TUBE	1	125°C 300V	BLACK
F	LIQUID GLUE	2	N/A	BLACK
E	SCREW	1	STAINLESS STEEL	N/A
D	GASKET	1	EPDM	BLACK
C	NUT	1	NYLON	BLACK
B	RJ45+PCB	1	Phosphor Bronze+Plonic	GOLD PLATING 6U"
A	HOUSING	1	NYLON	BLACK
NO	DESCRIPTION	QTY	MATERIAL	PLATING & COLOR

UNLESS OTHERWISE SPECIFIED TOLERANCES

Suzhou Singatron Auto Electronics CO.,LTD.
蘇州信音汽車電子有限公司

TITLE: RJ45 FRONT MOUNT CONN WITH HOUSING
DWG: Erod
CHKD: Jun
APVD: Steve

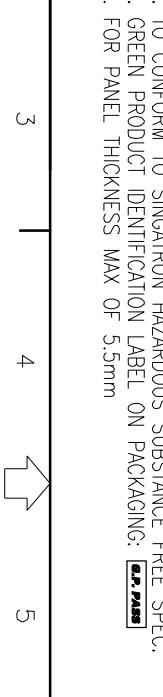
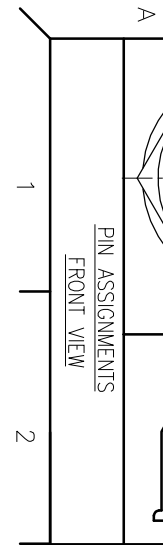
PART NO.: 21J3003-W051P1H
SCALE: 2:1
UNIT: mm
SIZE: A4
SHEET: 1 OF 1
REV: A

DECIMALS: :±0.5 X :±2'
ANGLES: :±0.3 X.X :±1'
X:XX :±0.2

CUSTOMER COPY

REV	ECN NO	OR DESCRIPTION	REVISED	DATE
A	ECN NO.:	S202208-C21	Erod	2022.10.19

- NOTES:
1. WATERPROOF RATE: IP67
IP67: IMMERSED IN 1M WATER FOR 30 MINUTES
 2. ELECTRICAL CHARACTERISTICS:
2-1. RATING:125V 1.5A
2-2. CONTACT RESISTANCE: 3 ohm MAX.(INITIAL)
2-3. DIELECTRIC WITHSTANDING VOLTAGE: 300V AC FOR ONE MINUTE
2-4. INSULATION RESISTANCE: 30Mohm MIN. MEASURED BY 300 VDC
 3. OTHER GENERAL SPEC. TO REFER "RJ45 SERIES SPEC".
 4. TO CONFORM TO SINGATRON HAZARDOUS SUBSTANCE FREE SPEC.
 5. GREEN PRODUCT IDENTIFICATION LABEL ON PACKAGING.
 6. FOR PANEL THICKNESS MAX OF 5.5mm



1	2	3	4	5	6	7	8
---	---	---	---	---	---	---	---