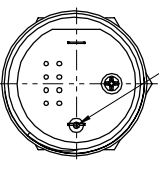
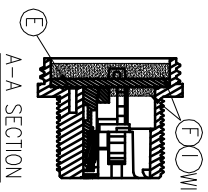
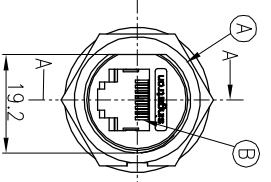
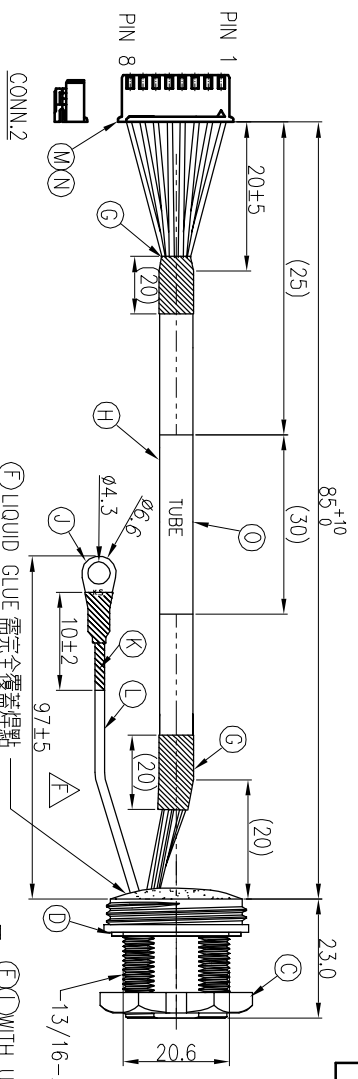
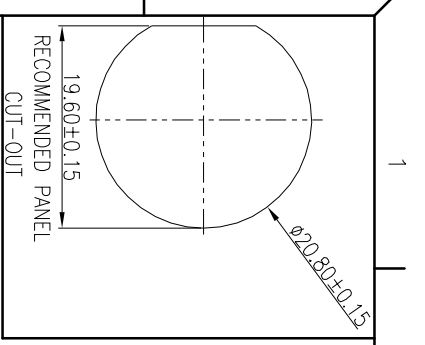


1	3	4	5	6	7	8	
		△ G	ECON NO.:S202308-C16	Erod	2023.11.13	REV. ECN NO OR DESCRIPTION	REVISED DATE
		D	ECON NO.:S202203-C09	JAY	2022.03.09		
		E	ECON NO.:S202208-C21	Erod	2022.10.19		
		F	ECON NO.:S202208-E11	Erod	2022.10.20		



1	ORANGE/WHITE	8	TWIST
2	ORANGE	7	TWIST
3	GREEN/WHITE	6	TWIST
4	BLUE	5	TWIST
5	BLUE/WHITE	4	TWIST
6	BROWN/WHITE	3	TWIST
7	BROWN	2	TWIST
8	BROWN	1	TWIST

PIN DEFINE
CONN.1 WIRE COLOR CONN.2

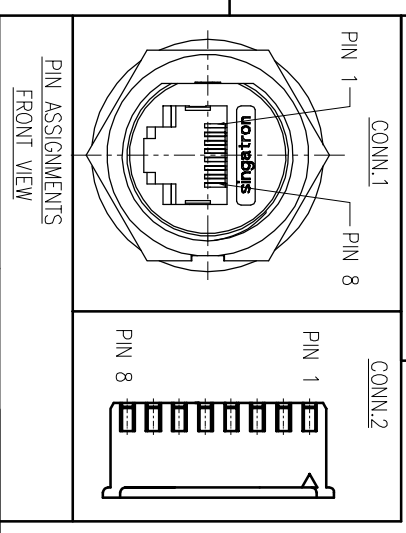
TUBE(管)	(管) PART NO.	"L" mm
BMS DIA BMS	ZTU3003-W051Q5H	L=85+10/-0

RJ45 CONN. BACK VIEW

WATERPROOF DEGREE OF PROTECTION: IP67

NOTES:

- ELECTRICAL CHARACTERISTICS:
 - RATING: 125V 1.5A
 - CONTACT RESISTANCE: 3 ohm Max. (INITIAL)
 - CONTACT WITHSTANDING VOLTAGE: 300V AC FOR ONE MINUTE
 - DELECTRIC RESISTANCE: 30Mohm Min. MEASURED BY 300 VDC
- OTHER GENERAL SPEC. TO REFER "RJ45 SERIES SPEC."
- TO CONFORM TO SINGATRON HAZARDOUS SUBSTANCE FREE SPEC.
- FOR PANEL THICKNESS Max OF 5.5mm
- ⊗ REPRESENT CRITICAL DIMENSIONS.



1	2	3	4	5	6	7	8
---	---	---	---	---	---	---	---

0	TUBE	1	Ø7.0 125°C 600V	WHITE
N	TERMINAL	8	JWT A2501TOP-00	GOLD PLATING
M	HOUSING	1	JWT A2512H00-8P	WHITE
L	WIRE	1	UL1015 22AWG	BLACK
K	TUBE	1	125°C 600V	BLACK
J	TERMINAL	1	KST RNBS1-4	TIN-PLATED
I	UV GLUE	1	N/A	NATURAL
H	CABEL	1	CAT5E FTP 24#*4P+MY+D +A/M UV RESISTANT	BLACK(PVC JACKET)
G	TUBE	2	125°C 300V	BLACK
F	LIQUID GLUE	2	N/A	BLACK
E	SCREW	1	STAINLESS STEEL	N/A
D	GASKET	1	EPDM	BLACK
C	NUT	1	NYLON	BLACK
B	RJ45+PCB	1	Phosphor Bronze+Plonic	GOLD PLATING 6U"
A	HOUSING	1	NYLON	BLACK
NO	DESCRIPTION	QTY	MATERIAL	PLATING & COLOR

UNLESS OTHERWISE SPECIFIED TOLERANCES

DECIMALS:	ANGLES:
X : ±0.5	X : ±2°
XX : ±0.3	XX : ±1'
X:XX : ±0.2	

TITLE	RJ45 FRONT MOUNT CONN.+HOUSING
DWN Erod	PART NO.:ZTU3003-W051Q5H
CHKD Jun	SCALE 2:1 UNIT: mm
APVD JF	SIZE: A4 SHEET: 1 OF 1 REV: G

CUSTOMER COPY