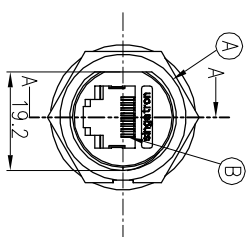
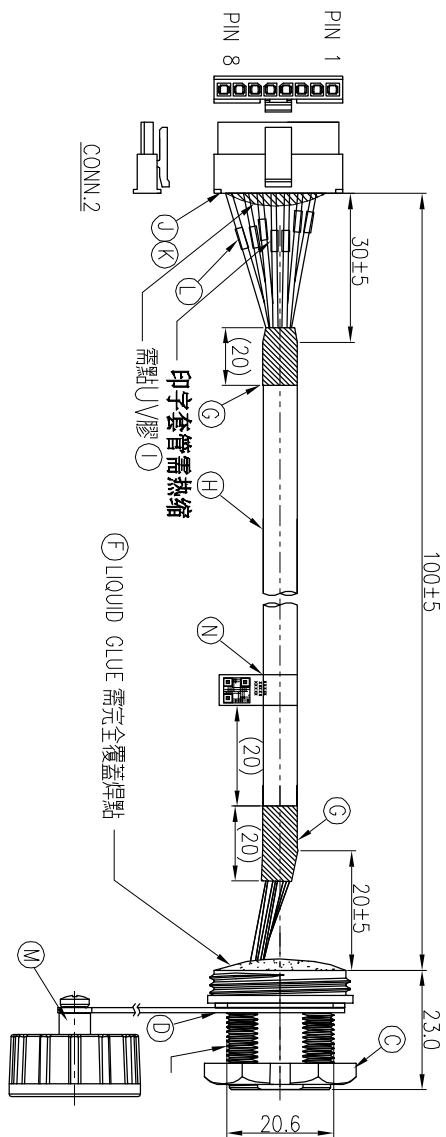
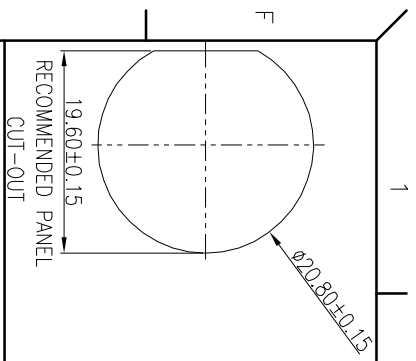
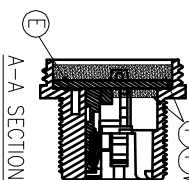


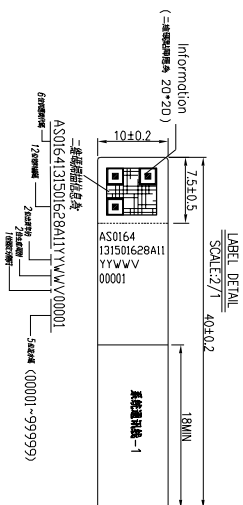
REV.	ECN NO	OR DESCRIPTION	REVISED	DATE
A	PDR NO. : A220819-1A		JAY	2023.04.25



WATERPROOF RATE: IP67
CONN.1
WITH UV/LIQUID GLUE



A-A SECTION

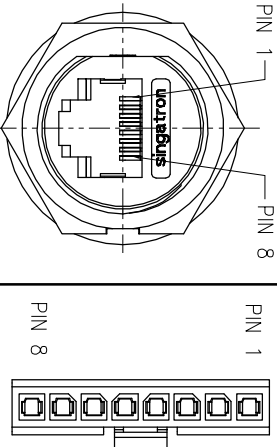


1	Blue&White (GND-CAN1)	4	TWIST
2	Orange (DOA)	5	TWIST
3	Brown&White (CAN1H)	2	TWIST
4	Brown (CAN1L)	1	TWIST
5	Orange&White (DOB)	6	TWIST
6	Green (RS485A)	7	TWIST
7	Green&White (RS485B)	8	TWIST

CONN.1	WIRE COLOR&TUBE PRINT CONTENT	CONN.2	
--------	-------------------------------	--------	--

NOTES:
1. ELECTRICAL CHARACTERISTICS:
2-1. RATING:125V 1.5A
2-2. CONTACT RESISTANCE: 3 ohm MAX (INITIAL)
2-3. DIELECTRIC WITHSTANDING VOLTAGE: 300V AC FOR ONE MINUTE
2-4. INSULATION RESISTANCE: 300Mohm MIN. MEASURED BY 300 VDC
3. TO CONFORM TO SINGATRON HAZARDOUS SUBSTANCE FREE SPEC.
4. GREEN PRODUCT IDENTIFICATION LABEL ON PACKAGING:

5. FOR PANEL THICKNESS MAX OF 5.5mm
6. Bar code printing:
THE BARCODE SHALL BE PRINTED BY THE MANUFACTURER ACCORDING TO THE SHIPMENT SCHEDULE, AND THE PRODUCTION SCHEDULE SHALL BE PRINTED DURING THE PRODUCTION CYCLE.
7. Torque Force: 0.8 ~1.0 Nm



PIN ASSIGNMENTS
FRONT VIEW

N	LABEL	1	L40*W10mm	WHITE
M	WATERPROOF CAP	1	P/N:2UB3001-W0000W	BLACK
L	TUBE	7	L=15MM SEE PIN OUT TUBE PRINT CONTENT	BLACK
K	TERMINAL	7	WF3001-TPSNOX	Bright Tin Over Nickel
J	HOUSING	1	WF3001-1H08B01	BLACK
I	UV GLUE	2	N/A	NATURAL
H	CABEL	1	4P*24AWG+D+AL UJ2517 Wt-1 00:6.5mm	BLACK (PVC JACKET)
G	TUBE	2	125°C 300V	BLACK
F	LIQUID GLUE	2	N/A	BLACK
E	SCREW	1	STAINLESS STEEL	N/A
D	GASKET	1	SILICONE	BLACK
C	NUT	1	NYLON	BLACK
B	RJ45+PCB	1	Phosphor Bronze+Plastic	GOLD PLATING 6U"
A	HOUSING	1	NYLON	BLACK
NO	DESCRIPTION	QTY	MATERIAL	PLATING & COLOR

UNLESS OTHERWISE SPECIFIED TOLERANCES

Suzhou Singatron Auto Electronics CO.,LTD.
蘇州信音汽車電子有限公司

TITLE RJ45 FRONT MOUNT CONN.+HOUSING

PART NO.2TJ3003-W05174H

SCALE 2:1 UNIT: mm

SIZE: A4 SHEET: 1 OF 1 REV: A

CUSTOMER COPY