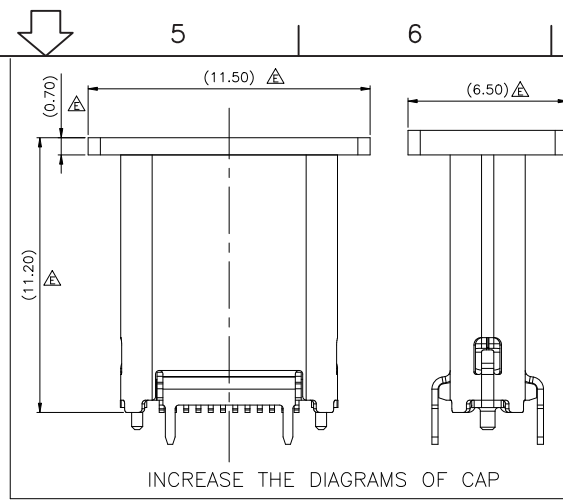
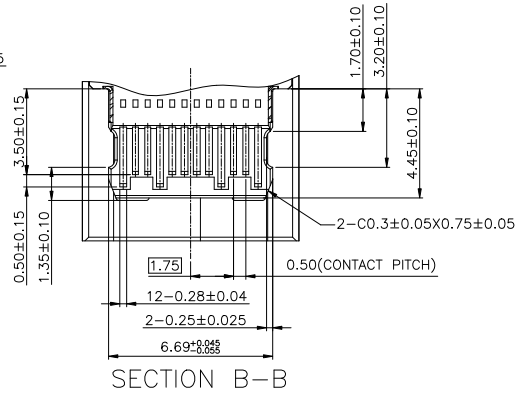
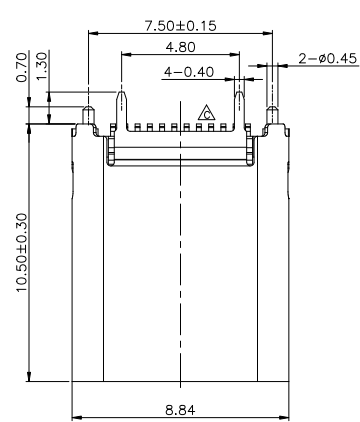
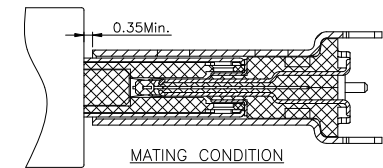
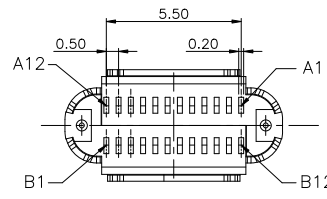
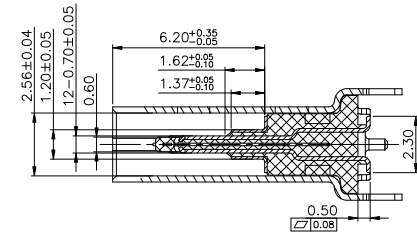
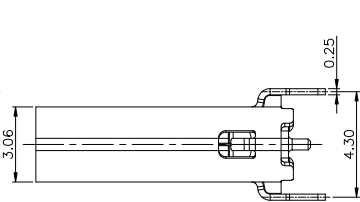
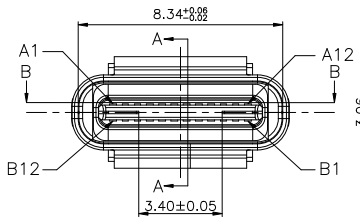




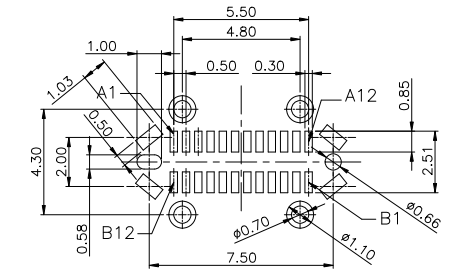
**RoHS Compliant HSF**  
2013/95/EC



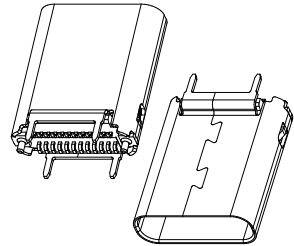
Pin	Signal Name	Mating Sequence	Pin	Signal Name	Mating Sequence
A1	GND	First	B12	GND	First
A2	SSTXp1	Second	B11	SSRXp1	Second
A3	SSTXn1	Second	B10	SSRXn1	Second
A4	V <sub>BUS</sub>	First	B9	V <sub>BUS</sub>	First
A5	CC1	Second	B8	SBU2	Second
A6	Dp1	Second	B7	Dn2	Second
A7	Dn1	Second	B6	Dp2	Second
A8	SBU1	Second	B5	CC2	Second
A9	V <sub>BUS</sub>	First	B4	V <sub>BUS</sub>	First
A10	SSRXn2	Second	B3	SSTXn2	Second
A11	SSRXp2	Second	B2	SSTXp2	Second
A12	GND	First	B1	GND	First
SHELL	GND		SHELL	GND	



NOTE:  
1.MATERIAL:  
1.1 INSULATOR: HIGH TEMPERATURE PLASTIC UL 94 V-0,Black Color  
1.2 CONTACT: HIGH CONDUCTIVITY COPPER(C18080,T=0.15mm)  
1.3 SHELL:STAINLESS STEEL(T=0.25mm)  
2.ELECTRICAL CHARACTERISTICS:  
2.1 CONTACT RESISTANCE: 40mΩ Max FOR INITIAL, 10mΩ CHANGE AFTER TEST. MEASURE AT 20mv, 100mA.  
2.2 CONTACT CURRENT RATING: 5A FOR COLLECTIVELY POWER SUPPLY PIN(PIN1,A4,A9,A12,B1,B4,B9,B12); 1.25A FOR V<sub>BUS</sub> PIN; 0.25A FOR OTHER SIGNAL PIN.  
2.3 DIELECTRIC WITHSTANDING VOLTAGE: 100V AC R.M.S.  
2.4 INSULATION RESISTANCE 100MΩ Min  
2.5 OPERATING TEMPERATURE: -40°C ~ 85°C  
3 MECHANICAL CHARACTERISTICS:  
3.1 MATING FORCE: 5~20 N.  
3.2 UNMATED FORCE: 6~20N AFTER TEST  
3.3 DURABILITY: 10,000 CYCLES  
4.PLATING  
4.1 TERMINAL CONTACT: (SEE TAB) GOLD PLATING ON CONTACT AREA, ALL OVER 50μ Min NICKEL AND 80μMin Matte Tin ALL OVER 50μ Min NICKEL ON SOLDER AREA  
4.2 SHELL: 50μ Min. NICKEL ALL OVER.  
5.PART NUMBER:  
2UB1186-62X07-X3A  
1: Tray 2: Tape reel  
1: G/F 2: 5u" 3: 10u" 4: 15u" 5: 30u"



RECOMMEND P.C.B LAYOUT (COMPONENT SIDE)  
TOLERANCE FOR PCB LAYOUT IS ±0.05  
KEEP OUT AREA



REV.	DESCRIPTION	ECN NO.	DWN.	CHK.	APVD.	DATE
E	Update CAP DIM		zw-Lin	Lijun	Nelson	2018.08.09
D	Modify Packing	20170920001	zw-Lin	Lijun	Nelson	2017.09.06
C	MODIFY THE SEHLL STRUCTURE	20160726002	Harry	Chain	DC	2016.07.26
B	ADD THE CARRIER TAP PACKING	20160714003	Harry	Chain	DC	2016.07.14
A	NEW DARWING	ECN NO.	Leiny	Chain	DC	2016.05.09

TOLERANCES UNLESS OTHERWISE SPECIFIED

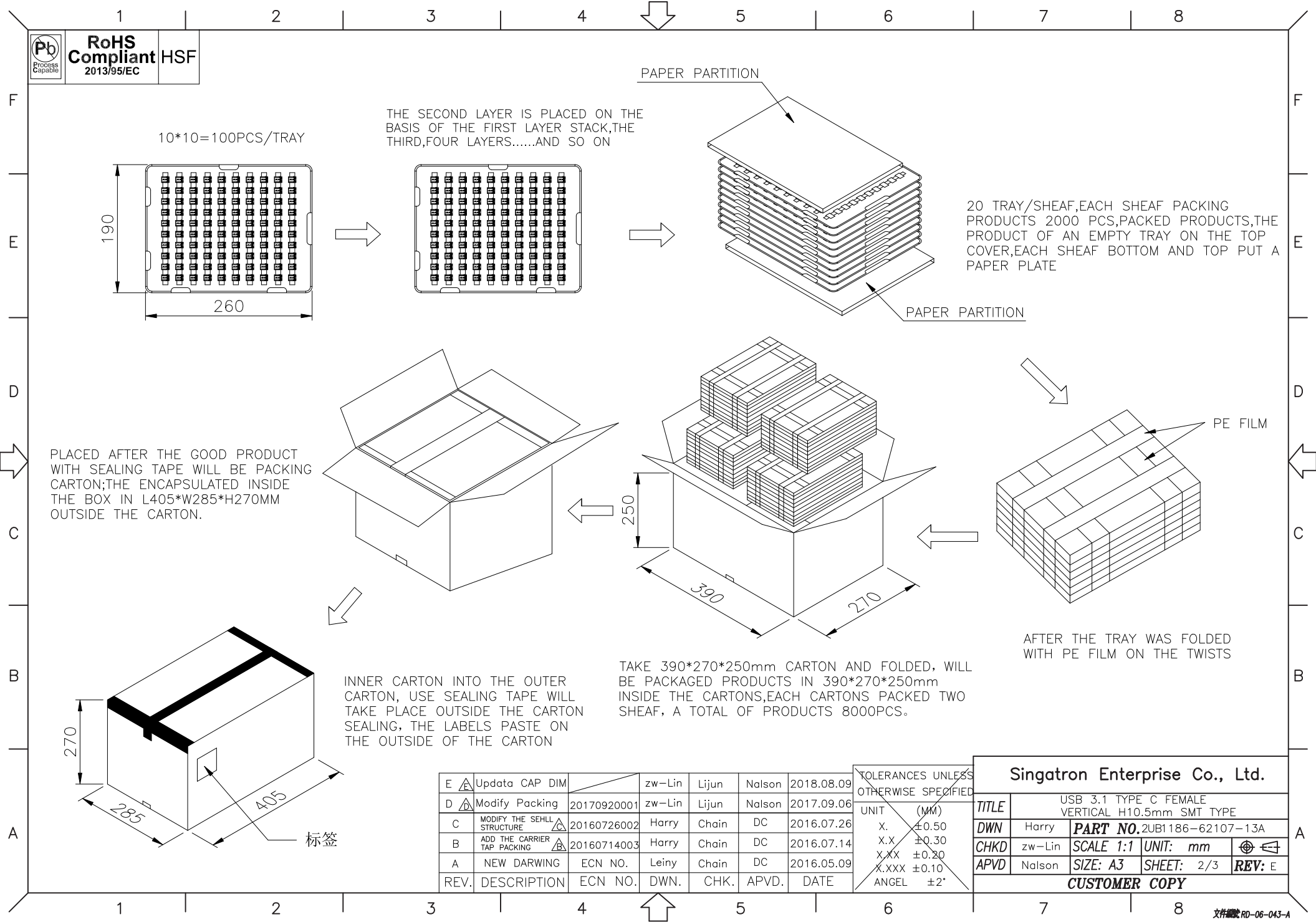
UNIT	(MM)
X.	±0.50
X.X	±0.30
X.XX	±0.20
X.XXX	±0.10
ANGEL	±2'

**Singatron Enterprise Co., Ltd.**

TITLE	USB 3.1 TYPE C FEMALE VERTICAL H10.5mm SMT TYPE		
DWN	Harry	PART NO.	2UB1186-62107-13A
CHKD	zw-Lin	SCALE 1:1	UNIT: mm
APVD	Nelson	SIZE: A3	SHEET: 1/3
<b>REV: E</b>			

**CUSTOMER COPY**

**Pb**  
Process Capable  
**RoHS Compliant**  
2013/95/EC  
**HSF**



10\*10=100PCS/TRAY

THE SECOND LAYER IS PLACED ON THE BASIS OF THE FIRST LAYER STACK, THE THIRD, FOUR LAYERS.....AND SO ON

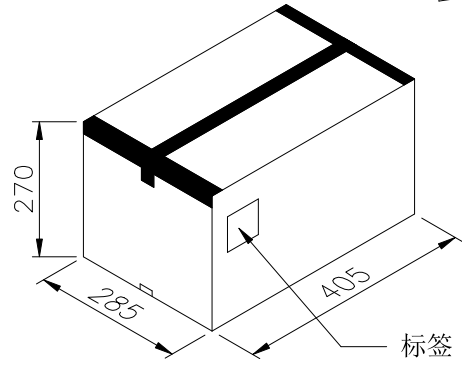
20 TRAY/SHEAF, EACH SHEAF PACKING PRODUCTS 2000 PCS, PACKED PRODUCTS, THE PRODUCT OF AN EMPTY TRAY ON THE TOP COVER, EACH SHEAF BOTTOM AND TOP PUT A PAPER PLATE

PLACED AFTER THE GOOD PRODUCT WITH SEALING TAPE WILL BE PACKING CARTON; THE ENCAPSULATED INSIDE THE BOX IN L405\*W285\*H270MM OUTSIDE THE CARTON.

TAKE 390\*270\*250mm CARTON AND FOLDED, WILL BE PACKAGED PRODUCTS IN 390\*270\*250mm INSIDE THE CARTONS, EACH CARTONS PACKED TWO SHEAF, A TOTAL OF PRODUCTS 8000PCS.

INNER CARTON INTO THE OUTER CARTON, USE SEALING TAPE WILL TAKE PLACE OUTSIDE THE CARTON SEALING, THE LABELS PASTE ON THE OUTSIDE OF THE CARTON

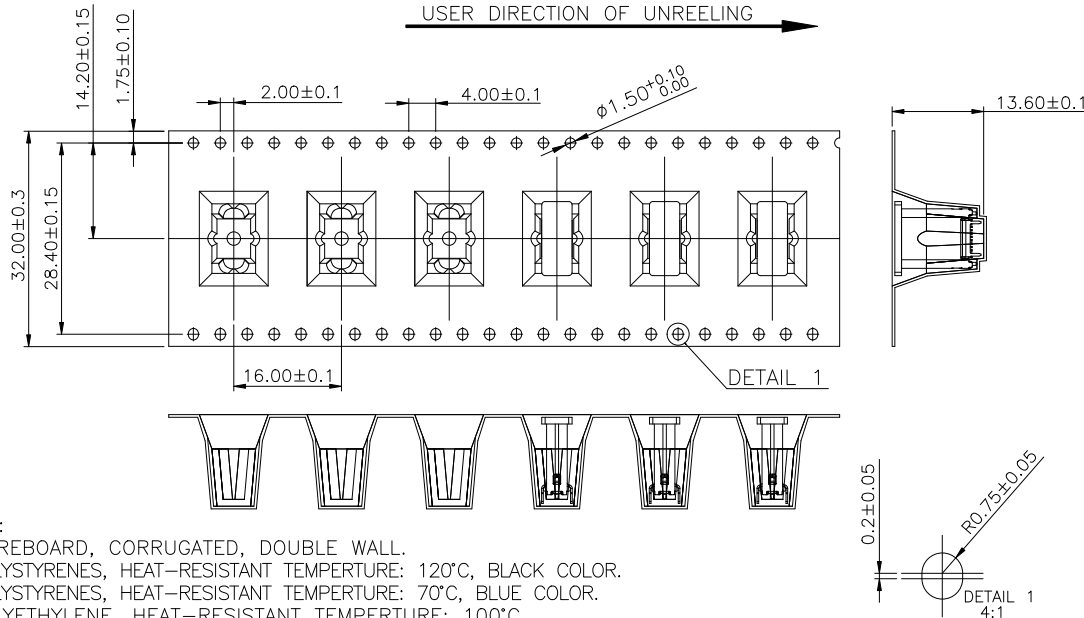
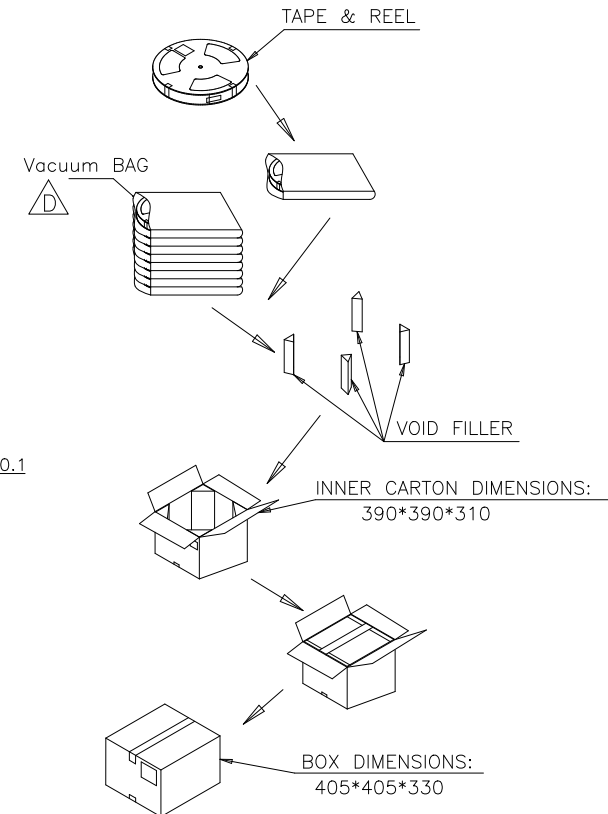
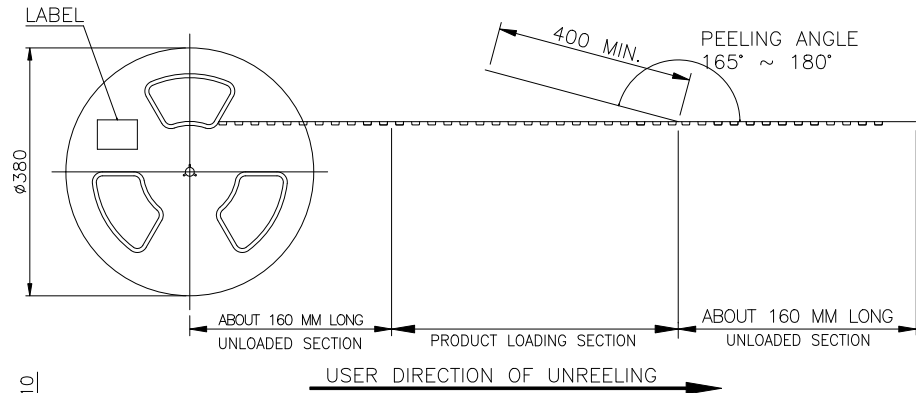
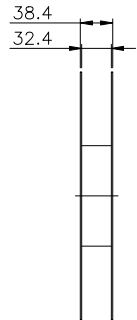
AFTER THE TRAY WAS FOLDED WITH PE FILM ON THE TWISTS



E	Update CAP DIM		zw-Lin	Lijun	Nalson	2018.08.09
D	Modify Packing	20170920001	zw-Lin	Lijun	Nalson	2017.09.06
C	MODIFY THE SEHLL STRUCTURE	20160726002	Harry	Chain	DC	2016.07.26
B	ADD THE CARRIER TAP PACKING	20160714003	Harry	Chain	DC	2016.07.14
A	NEW DARWING	ECN NO.	Leiny	Chain	DC	2016.05.09
REV.	DESCRIPTION	ECN NO.	DWN.	CHK.	APVD.	DATE

TOLERANCES UNLESS OTHERWISE SPECIFIED	
UNIT	(MM)
X.	±0.50
X.X	±0.30
X.XX	±0.20
X.XXX	±0.10
ANGEL	±2'

<b>Singatron Enterprise Co., Ltd.</b>			
<b>TITLE</b>	USB 3.1 TYPE C FEMALE VERTICAL H10.5mm SMT TYPE		
<b>DWN</b>	Harry	<b>PART NO.</b> 2UB1186-62107-13A	
<b>CHKD</b>	zw-Lin	<b>SCALE 1:1</b>	<b>UNIT: mm</b>
<b>APVD</b>	Nalson	<b>SIZE: A3</b>	<b>SHEET: 2/3</b>
<b>REV: E</b>			
<b>CUSTOMER COPY</b>			



**NOTE:**

- 1.MATERIAL:  
 BOX: FIBREBOARD, CORRUGATED, DOUBLE WALL.  
 TAPE: POLYSTYRENES, HEAT-RESISTANT TEMPERATURE: 120°C, BLACK COLOR.  
 REEL: POLYSTYRENES, HEAT-RESISTANT TEMPERATURE: 70°C, BLUE COLOR.  
 BAG: POLYETHYLENE, HEAT-RESISTANT TEMPERATURE: 100°C.
- 2.PEELING STRENGTH: 0.1 ~ 1.3 N (10 ~ 130 GRAMS)

3.PEELING SPEED: 300 mm/min.

4.EACH BAG SHALL BE INCLUDED DESICCANT.

E	Update CAP DIM		zw-Lin	Lijun	Nelson	2018.08.09
D	Modify Packing	20170920001	zw-Lin	Lijun	Nelson	2017.09.06
C	MODIFY THE SEHLL STRUCTURE	20160726002	Harry	Chain	DC	2016.07.26
B	ADD THE CARRIER TAP PACKING	20160714003	Harry	Chain	DC	2016.07.14
A	NEW DARWING	ECN NO.	Leiny	Chain	DC	2016.05.09
REV.	DESCRIPTION	ECN NO.	DWN.	CHK.	APVD.	DATE

TOLERANCES UNLESS OTHERWISE SPECIFIED

UNIT	(MM)
X.	±0.50
X.X	±0.30
X.XX	±0.20
X.XXX	±0.10
ANGEL	±2'

400	8	3200 PCS	-- KG	-- KG
PCS/ REEL	REELS/ CARTON	QUANTITY	GROSS WEIGHT	NET WEIGHT

<b>Singatron Enterprise Co., Ltd.</b>				
<b>TITLE</b>	USB 3.1 TYPE C FEMALE VERTICAL H10.5mm SMT TYPE			
<b>DWN</b>	Harry	<b>PART NO.</b>	2UB1186-62107-13A	
<b>CHKD</b>	zw-Lin	<b>SCALE 1:1</b>	<b>UNIT: mm</b>	
<b>APVD</b>	Nelson	<b>SIZE: A3</b>	<b>SHEET: 3/3</b>	<b>REV: E</b>
<b>CUSTOMER COPY</b>				