


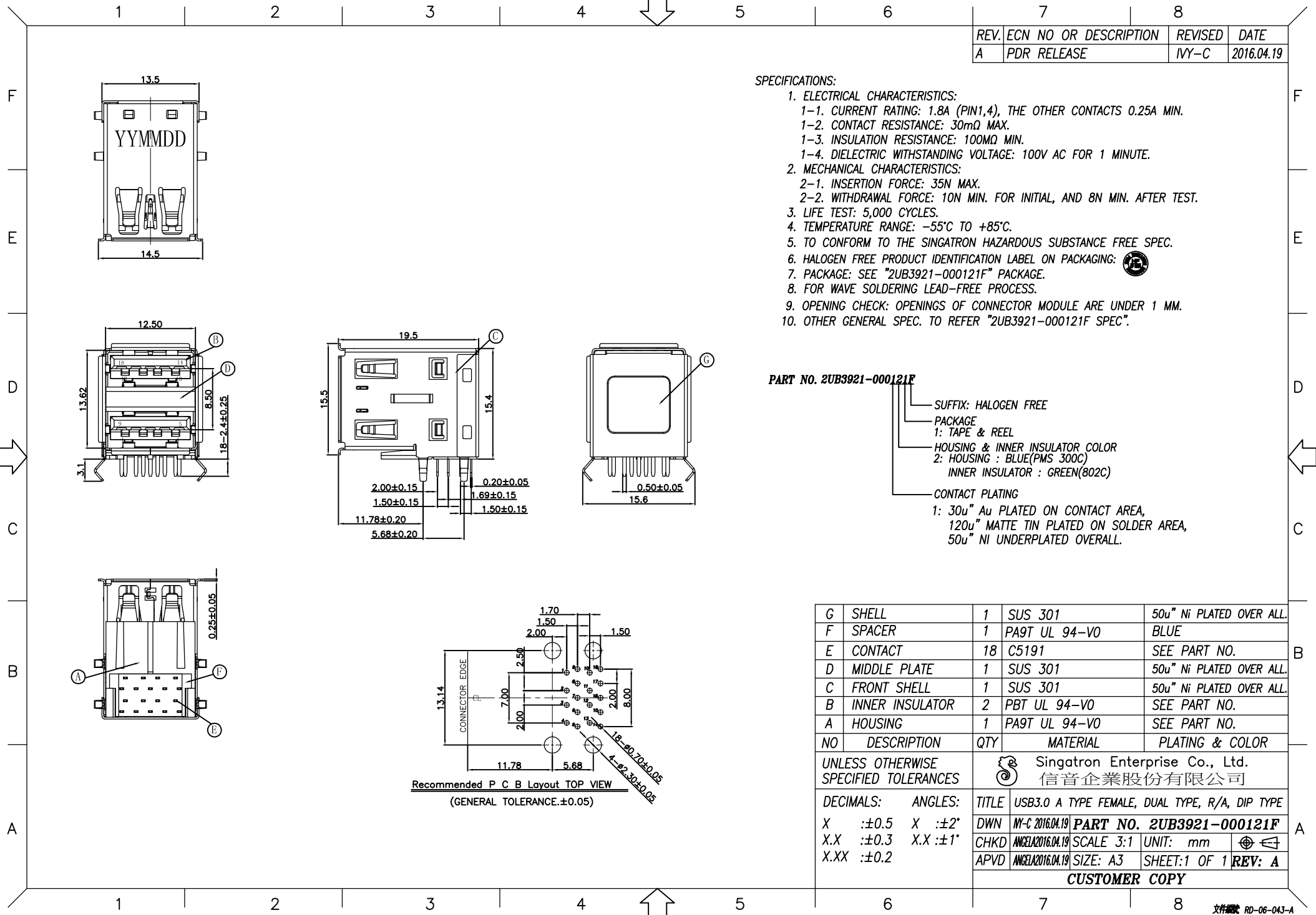
| | | | |
|------|-----------------------|---------|------------|
| REV. | ECN NO OR DESCRIPTION | REVISED | DATE |
| A | PDR RELEASE | IVY-C | 2016.04.19 |

SPECIFICATIONS:

- ELECTRICAL CHARACTERISTICS:
 - CURRENT RATING: 1.8A (PIN1,4), THE OTHER CONTACTS 0.25A MIN.
 - CONTACT RESISTANCE: 30mΩ MAX.
 - INSULATION RESISTANCE: 100MΩ MIN.
 - DIELECTRIC WITHSTANDING VOLTAGE: 100V AC FOR 1 MINUTE.
- MECHANICAL CHARACTERISTICS:
 - INSERTION FORCE: 35N MAX.
 - WITHDRAWAL FORCE: 10N MIN. FOR INITIAL, AND 8N MIN. AFTER TEST.
- LIFE TEST: 5,000 CYCLES.
- TEMPERATURE RANGE: -55°C TO +85°C.
- TO CONFORM TO THE SINGATRON HAZARDOUS SUBSTANCE FREE SPEC.
- HALOGEN FREE PRODUCT IDENTIFICATION LABEL ON PACKAGING: 
- PACKAGE: SEE "2UB3921-000121F" PACKAGE.
- FOR WAVE SOLDERING LEAD-FREE PROCESS.
- OPENING CHECK: OPENINGS OF CONNECTOR MODULE ARE UNDER 1 MM.
- OTHER GENERAL SPEC. TO REFER "2UB3921-000121F SPEC".

PART NO. 2UB3921-000121F

- SUFFIX: HALOGEN FREE
- PACKAGE: 1: TAPE & REEL
- HOUSING & INNER INSULATOR COLOR: 2: HOUSING : BLUE(PMS 300C)
INNER INSULATOR : GREEN(802C)
- CONTACT PLATING: 1: 30u" Au PLATED ON CONTACT AREA,
120u" MATTE TIN PLATED ON SOLDER AREA,
50u" NI UNDERPLATED OVERALL.



| NO | DESCRIPTION | QTY | MATERIAL | PLATING & COLOR |
|----|-----------------|-----|---------------|--------------------------|
| G | SHELL | 1 | SUS 301 | 50u" Ni PLATED OVER ALL. |
| F | SPACER | 1 | PA9T UL 94-V0 | BLUE |
| E | CONTACT | 18 | C5191 | SEE PART NO. |
| D | MIDDLE PLATE | 1 | SUS 301 | 50u" Ni PLATED OVER ALL. |
| C | FRONT SHELL | 1 | SUS 301 | 50u" Ni PLATED OVER ALL. |
| B | INNER INSULATOR | 2 | PBT UL 94-V0 | SEE PART NO. |
| A | HOUSING | 1 | PA9T UL 94-V0 | SEE PART NO. |

UNLESS OTHERWISE SPECIFIED TOLERANCES

 Singatron Enterprise Co., Ltd.
信音企業股份有限公司

| DECIMALS: | ANGLES: | TITLE |
|------------|----------|--|
| X :±0.5 | X :±2° | USB3.0 A TYPE FEMALE, DUAL TYPE, R/A, DIP TYPE |
| X.X :±0.3 | X.X :±1° | DWN MY-C 2016.04.19 PART NO. 2UB3921-000121F |
| X.XX :±0.2 | | CHKD ANGELA2016.04.19 SCALE 3:1 UNIT: mm |
| | | APVD ANGELA2016.04.19 SIZE: A3 SHEET:1 OF 1 REV: A |

CUSTOMER COPY