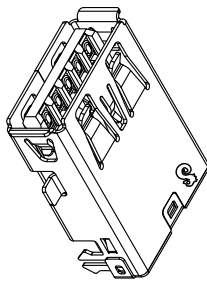
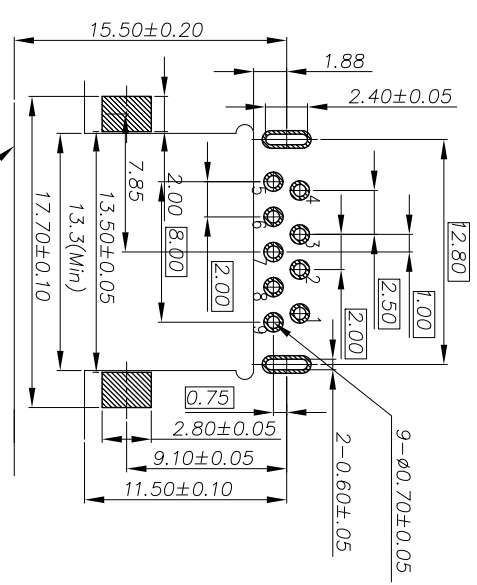
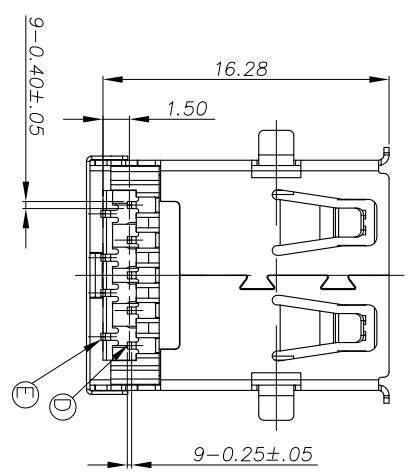
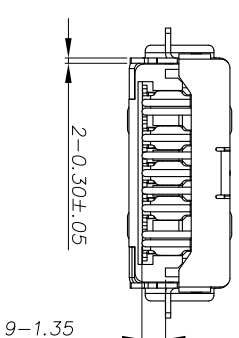
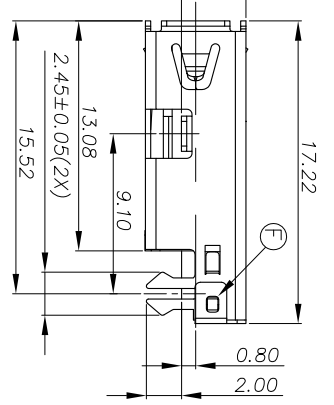
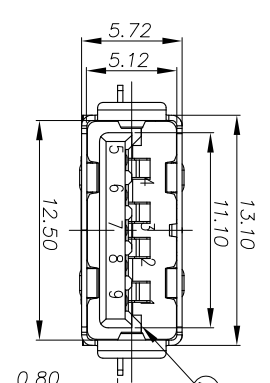


DATE CODE
 ø5.0mm AVAILABLE
 VACUUM PICK UP AREA



- SPECIFICATIONS:
- ELECTRICAL CHARACTERISTICS:
 - CURRENT RATING: 1.8A (PIN1,4) ; OTHER CONTACTS 0.25A
 - CONTACT RESISTANCE: 50mΩ MAX.
 - DIELECTRIC WITHSTANDING VOLTAGE: 100V AC FOR 1 MINUTE
 - INSULATION RESISTANCE: 100MΩ/MIN
 - MECHANICAL CHARACTERISTICS:
 - INSERTION FORCE : 3.5 Kgf MAX
 - WITHDRAWAL FORCE : 1.0 Kgf(INITIAL),0.8 Kgf(AFTER TEST)
 - DURABILITY: 5,000 CYCLES.
 - TO CONFORM TO SINGATRON HAZARDOUS SUBSTANCE FREE SPEC.
 - HALOGEN FREE PRODUCT IDENTIFICATION MARK ON JACK: Ⓢ
 - HALOGEN FREE PRODUCT IDENTIFICATION LABEL ON PACKAGING. Ⓢ
 - FOR WAVE SOLDERING LEAD-FREE PROCESS.
 - DATE : YMMDD
 - PACKAGING : TAPE & REEL.



CONNECTOR FRONT EDGE
 Recommended P.C.B Layout

| REV. | ECN NO OR DESCRIPTION | REVISED | DATE |
|------|-----------------------|---------|------------|
| A | PRODUCT RELEASE | VICTOR | 2012.02.12 |
| B | ECN NO: S121223 | ANGUS | 2013.06.10 |

| Pin Number | Signal ASSIGNMENT |
|------------|-------------------|
| PIN 1 | VBUS |
| PIN 2 | D- |
| PIN 3 | D+ |
| PIN 4 | GND |
| PIN 5 | SDA_SSPX- |
| PIN 6 | SDA_SSPX+ |
| PIN 7 | GND_DRAIN |
| PIN 8 | SDA_SSTX- |
| PIN 9 | SDA_SSTX+ |

| NO | DESCRIPTION | QTY | MATERIAL | PLATING & COLOR |
|----|-------------|-----|-----------------|--|
| F | REAR SHELL | 1 | STAINLESS STEEL | |
| E | TERMINAL | 5 | COPPER ALLOY | 2μAu OVER 300Pd/Ni PLATED ON MATING AREA, 120μ Sn PLATED ON SOLDERING 80μ NICKEL UNDER PLATING OVERALL |
| D | TERMINAL | 4 | COPPER ALLOY | 2μAu OVER 300Pd/Ni PLATED ON MATING AREA, 120μ Sn PLATED ON SOLDERING 80μ NICKEL UNDER PLATING OVERALL |
| C | SHELL | 1 | STAINLESS STEEL | NICKEL 60μ"MIN |
| B | BASE | 1 | THERMOPLASTIC | BLUE (300C) |
| A | COVER | 1 | THERMOPLASTIC | BLUE (300C) |

UNLESS OTHERWISE SPECIFIED TOLERANCES
 Singatron Enterprise Co., Ltd.
 信亨企業股份有限公司

| DECIMALS: | ANGLES: | TITLE |
|-------------|-----------|---------------------------|
| X : ±0.5 | X : ±2° | USB 3.0 REVERSE CONNECTOR |
| X.X : ±0.3 | X.X : ±1° | DWN ANGUS |
| X.XX : ±0.2 | | CHKD CERRY |
| | | APVD MAX |

PART NO. 2UB4016-120101F
 SCALE 1:1
 UNIT: mm
 SHEET: 1 OF 1
 REV: B
 CUSTOMER COPY