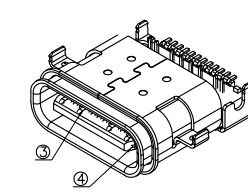
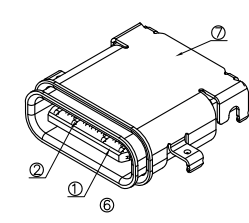
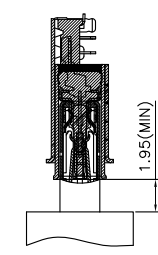
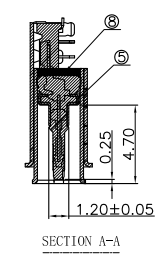
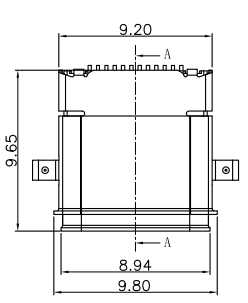


1 2 3 4 5 6 7 8

F
E
D
C
B
A

F
E
D
C
B
A

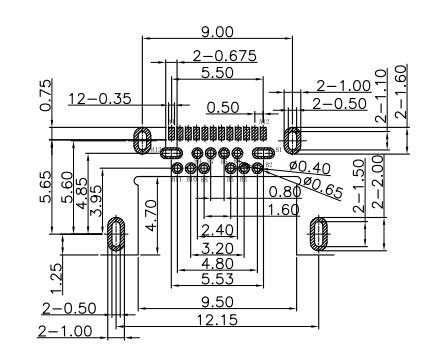
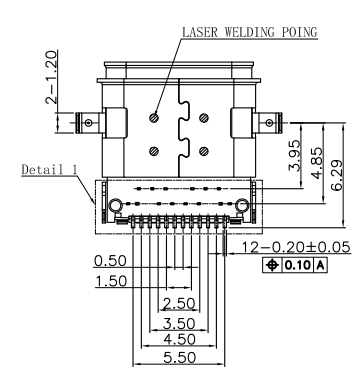
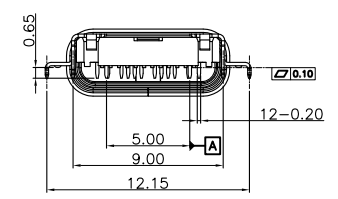
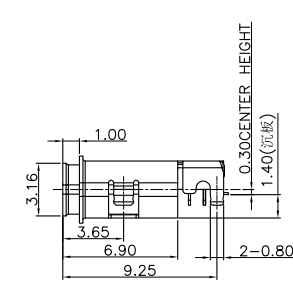
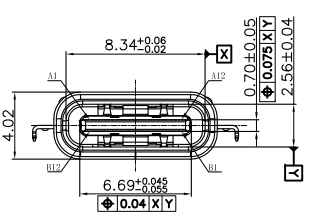


Pin	Signal Name	Mating Sequence	Pin	Signal Name	Mating Sequence
A1	GND	First	B12	GND	First
A2	SSTxp1	Second	B11	SSRxp1	Second
A3	SSTxp1	Second	B10	SSRxp1	Second
A4	Vas	First	B9	Vas	First
A5	CC1	Second	B8	SBU2	Second
A6	Dp1	Second	B7	Dn2	Second
A7	Dn1	Second	B6	Dp2	Second
A8	SBU1	Second	B5	CC2	Second
A9	Vas	First	B4	Vas	First
A10	SSRx2	Second	B3	SSTxp2	Second
A11	SSRx2	Second	B2	SSTxp2	Second
A12	GND	First	B1	GND	First
SHELL	GND		SHELL	GND	

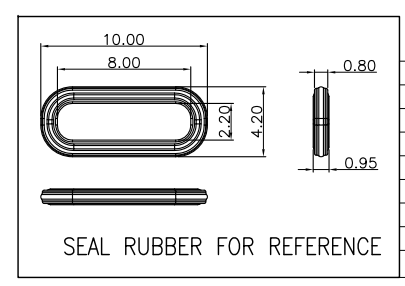


NOTES:

- MATERIAL: SEE "TABLE 1";
- FINISH: SEE "TABLE 1";
- ELECTRICAL :
 - CONTACT CURRENT RATING :
5A(VBUS PIN 1.5A/PIN),
5A(GND PIN 1.25A/PIN MAX),0.25A/PIN(OTHER PIN).
 - INSULATION RESISTANCE :
100 MEGAOHMS MIN. AT 250VDC.
 - DIELECTRIC WITHSTANDING VOLTAGE :
100VAC MIN.
 - LOW LEVEL CONTACT RESISTANCE :
INITIAL 40mΩ MAX.
AFTER 50mΩ MAX.
- MECHANICAL CHARACTERISTICS :
 - MATING FORCE: 5~20N.
 - UNMATING FORCE: 8~20N(INITIAL),6~20N(AFTER 10000 CYCLES);
 - DURABILITY : 10,000 MATING CYCLES.
 - OPERATING TEMPERATURE :-40°C TO +80°C



RECOMMENDED P.C.B LAYOUT(Both sides are sample)
Tolerance:±0.05,Thickness=0.60mm



SEAL RUBBER FOR REFERENCE

TABLE 1:

NO.	PART NAME	QTY	MATERIAL	DESCRIPTION	REMARK
⑧	GLUE WATER	1	Epoxy	BLACK;	
⑦	Shell-2	1	Stainless steel	PEARL NI PLATING;	T=0.20mm
⑥	Shell-1	1	Stainless steel	PEARL NI PLATING;	T=0.20mm
⑤	GND PLATE	1	Stainless steel	NI PLATING;	T=0.10mm
④	MID PLATE	1	Stainless steel		T=0.15mm
③	Terminal-B	12	C7025	CONTACT AREA:AU15u ⁺	T=0.12mm
②	Terminal-A	12	C7025	CONTACT AREA:AU15u ⁺	T=0.12mm
①	Housing	1	HIGH TEMP NYLON	Black	

UNLESS OTHERWISE SPECIFIED TOLERANCES

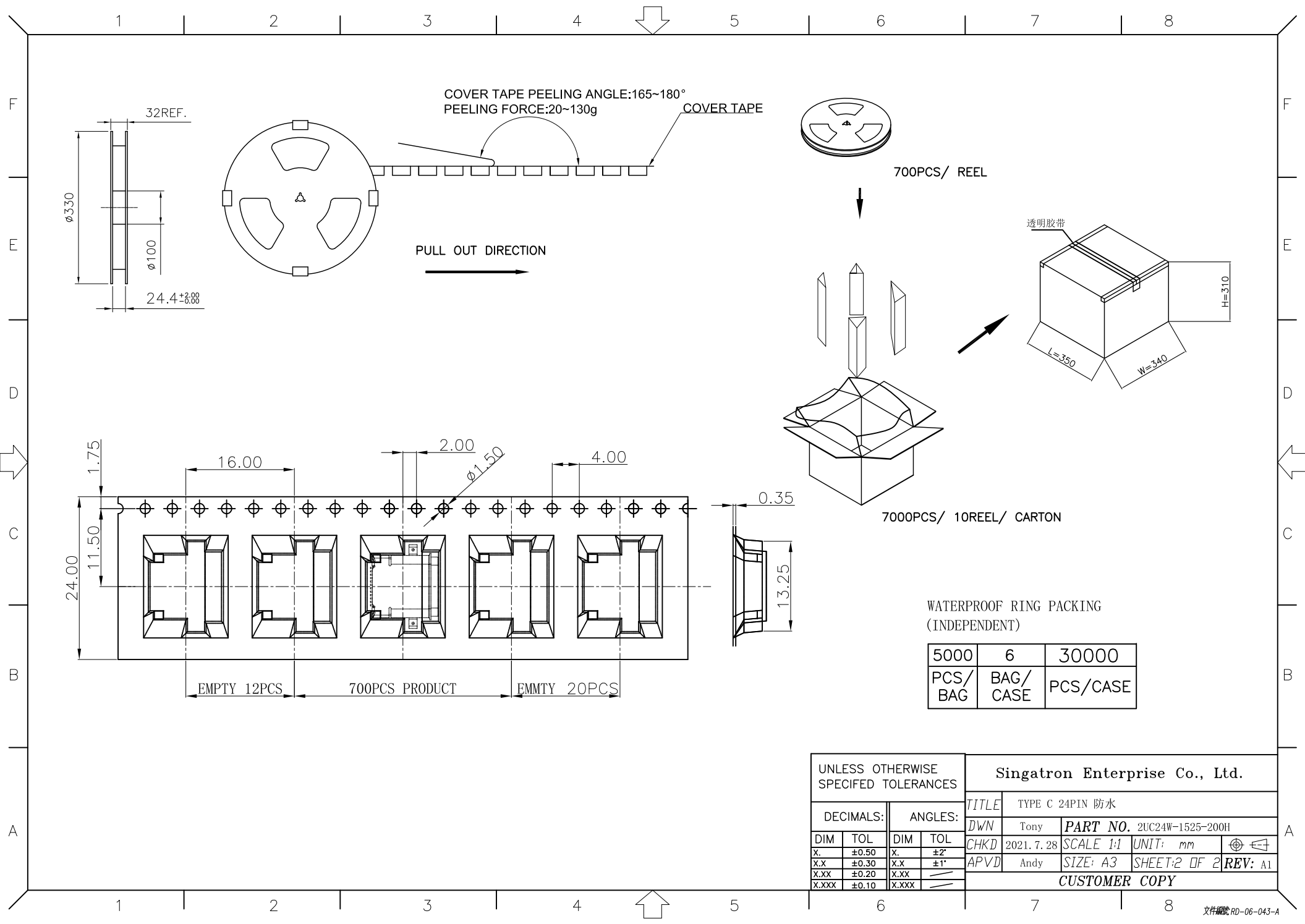
DECIMALS:		ANGLES:	
DIM	TOL	DIM	TOL
X.	±0.50	X.	±2°
X.X	±0.30	X.X	±1°
X.XX	±0.20	X.XX	
X.XXX	±0.10	X.XXX	

Singatron Enterprise Co., Ltd.

TITLE	TYPE C 24PIN 防水		
DWN	Tony	PART NO.	2UC24W-1525-200H
CHKD	2021.7.28	SCALE 1:1	UNIT: mm
APVD	Andy	SIZE: A3	SHEET:1 OF 2
		REV:	A1

CUSTOMER COPY

1 2 3 4 5 6 7 8



COVER TAPE PEELING ANGLE:165~180°
PEELING FORCE:20~130g

700PCS/ REEL

透明胶带

H=310

L=350

W=340

7000PCS/ 10REEL/ CARTON

WATERPROOF RING PACKING
(INDEPENDENT)

5000	6	30000
PCS/ BAG	BAG/ CASE	PCS/ CASE

UNLESS OTHERWISE
SPECIFIED TOLERANCES

Singatron Enterprise Co., Ltd.

DECIMALS:		ANGLES:	
DIM	TOL	DIM	TOL
X.	±0.50	X.	±2°
X.X	±0.30	X.X	±1°
X.XX	±0.20	X.XX	///
X.XXX	±0.10	X.XXX	///

TITLE	TYPE C 24PIN 防水		
DWN	Tony	PART NO.	2UC24W-1525-200H
CHKD	2021.7.28	SCALE 1:1	UNIT: mm
APVD	Andy	SIZE: A3	SHEET: 2 OF 2
		REV:	A1

CUSTOMER COPY