

1 2 3 4 5 6 7 8

F

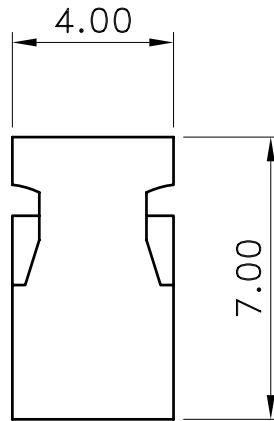
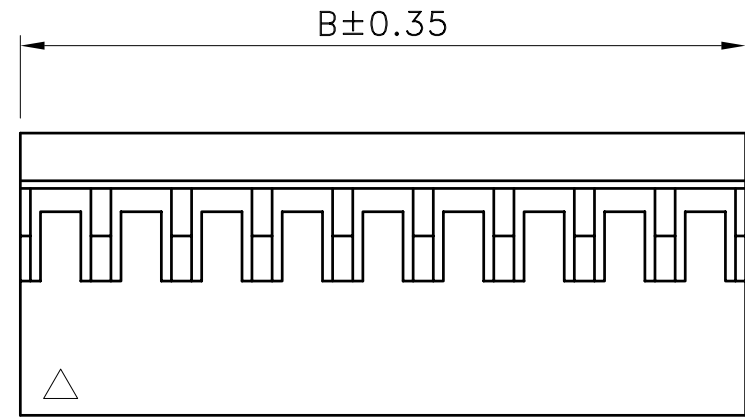
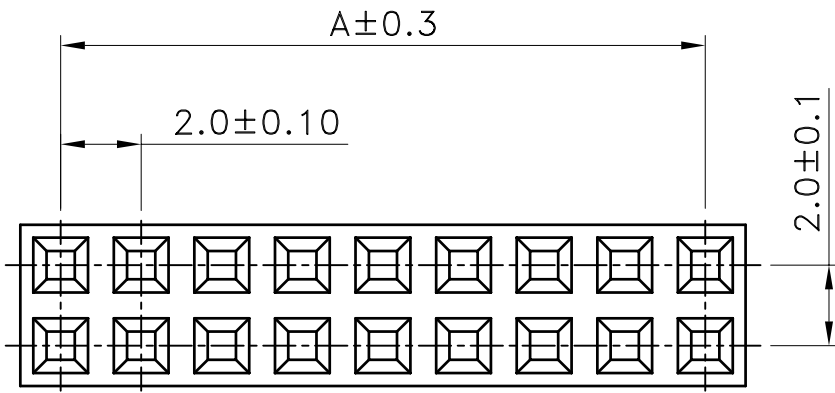
E

D

C

B

A



■ SPECIFICATIONS

- Current Rating : 1A AC/DC
- Withstanding Voltage : 1,000V AC/minute
- Insulation Resistance : 1,000MΩ min.
- Temperature Range : - 40°C to + 105°C
- Contact Resistance : 20mΩ max.

■ HOUSING

- Part No. : 2WB1127-XXx2
- Poles : 04~50(Double Row)
- RoHS Compliant 2002/95/EC
- Material : Noryl UL94V-1
- Q'ty : 1,000 pcs./Bag

Poles	Dimensions(mm)	
	A	B
4	2.00	4.20
6	4.00	6.20
8	6.00	8.20
10	8.00	10.20
12	10.00	12.20
14	12.00	14.20
16	14.00	16.20
18	16.00	18.20
20	18.00	20.20
22	20.00	22.20
24	22.00	24.20
26	24.00	26.20
28	26.00	28.20
30	28.00	30.20
32	30.00	32.20
34	32.00	34.20
36	34.00	36.20
38	36.00	38.20
40	38.00	40.20
42	40.00	42.20
44	42.00	44.20
46	44.00	46.20
48	46.00	48.20
50	48.00	50.20

TOLERANCE		LTR	REVISION RECORD		DATE	LTR	REVISION RECORD		DATE
.0	±0.3	ECR	200503-004	05/03/14					
.00	±0.2	ECR	200811-025	08/11/28					
.000	±0.1	ECR	200812-015	08/12/15					
ALL	±	ECR	200903-012	09/03/24					
ANGLE									
0°	±								
.0°	±								

Singatron Enterprise Co., Ltd.

TITLE	2.00mm Center Mini Latch Housing		
DWN	王誠賢	PART NO.	2WB1127-XXx2
CHKD	黃科源	SCALE 1:1	UNIT: mm
APVD	張育瑞	SIZE: A3	SHEET: 1 OF 1 REV: a5

CUSTOMER
Conforms to The RoHS Instruction

CUSTOMER COPY

1 2 3 4 5 6 7 8