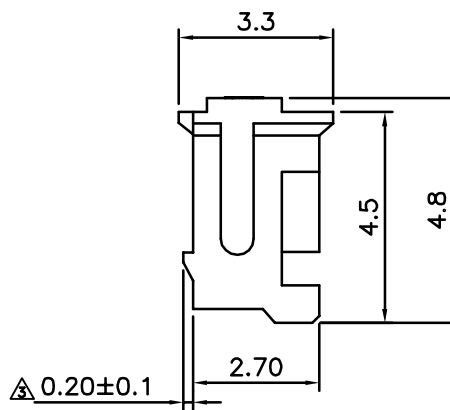


Poles	Dimension(mm)		
	A	B	C
2	1.50	4.50	3.40
3	3.00	6.00	4.90
4	4.50	7.50	6.40
5	6.00	9.00	7.90
6	7.50	10.50	9.40
7	9.00	12.00	10.90
8	10.50	13.50	12.40
9	12.00	15.00	13.90
10	13.50	16.50	15.40
11	15.00	18.00	16.90
12	16.50	19.50	18.40
13	18.00	21.00	19.90
14	19.50	22.50	21.40
15	21.00	24.00	22.90

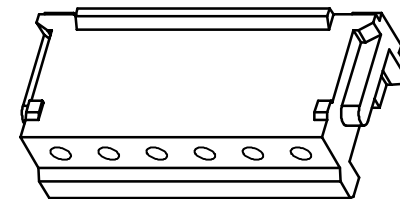
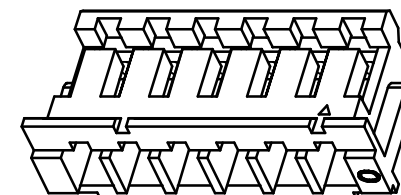


### SPECIFICATIONS

- Current Rating : 1A AC/DC
- Withstanding Voltage : 500V AC/minute
- Insulation Resistance : 500M Ω min
- Temperature Range : - 25 °C to + 85°C
- Contact Resistance : 20m Ω max

### HOUSING

- Part No. : 2WB1173-XX
- Poles : 2~15
- Material : Nylon 66 UL94V-0
- Q' ty : 1000pcs./Bag



3D VIEW

TOLERANCE	LTR	REVISION RECORD	NAME	DATE
±0.30	△	RoHS Compliant	奈秀麗	05/05/15
±0.20	△	ECR 200803-011	黃科源	08/03/10
±0.10	△	圖面整理,增加CS MARK	Jack	11-08-25
<b>ANGLE</b>				
0°	±1°	△		
0°	±	△		
SHEET	1/1	△		

Singatron Enterprise Co., Ltd.

TITLE 1.50mm Crimp Style Connectors Housing

DWN 周美麗 PART NO. 2WB1173-XX

CHKD 蕭國川 SCALE 1:1 UNIT: mm

APVD 張育瑞 SIZE: A3 SHEET: 1 OF 1 REV: a3

CUSTOMER COPY