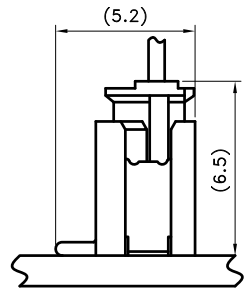
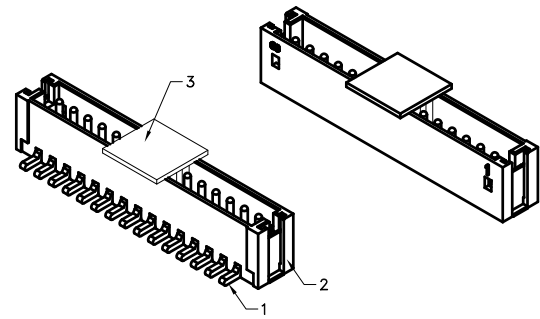
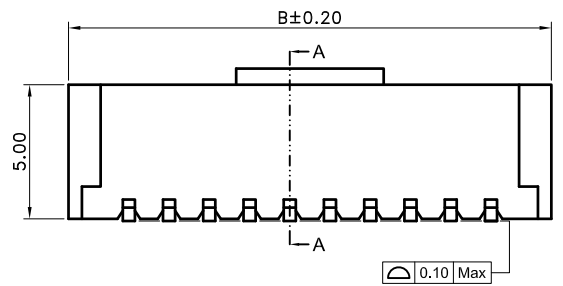
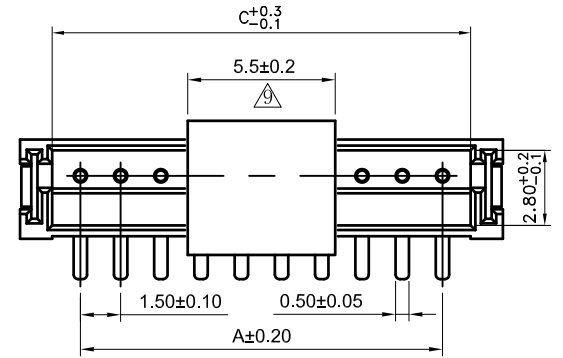
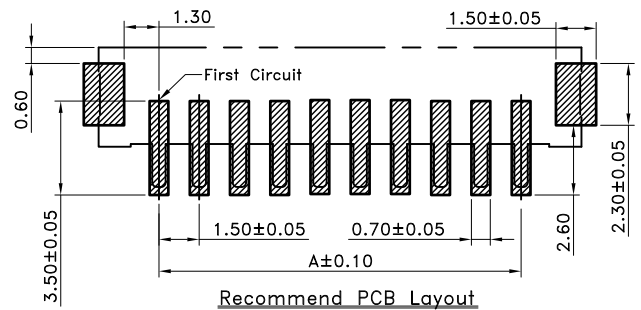
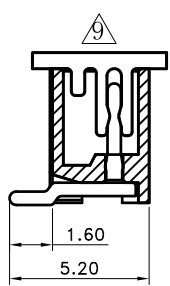


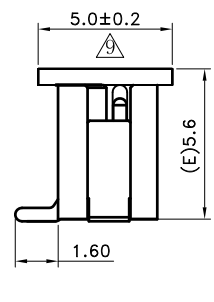
1 2 3 4 5 6 7 8



Assembly Layout (REF.)



A-A Section



With Cap

- SPECIFICATIONS
- Voltage Rating : 50V AC/DC
 - Current Rating : 1A AC/DC
 - Withstanding Voltage : 500V AC/minute
 - Insulation Resistance : 500MΩ min
 - Temperature Range : - 25°C to + 85°C
 - Contact Resistance : 20mΩ max

- WAFER
- Part No. : 2WB1174V-XX (XX)XX XX

- Code No. ① ② ③ ④
- ① Poles No. : 2 ~ 15 (Straight)
 - ② Contact Plated : Blank : Tin Plated
NM : Matte -Tin
G : Gold Plated
 - ③ Base Color : Blank : Natural
RD : Red
GR : Green
BU : Blue
 - ④ Blank : None-Halogen Free
HF : Halogen Free

- Material :
1. Contact : Brass, Plated: Refer Above Options
2. Base : Nylon 9T UL94V-0
3. Cap : Nylon PA46 UL94V-0
- Mating Housing : 2WB1173-XX
- Mating Terminal : 2WT1173-T
- Packing : Tape & Reel

Poles	Dimensions (mm)		
	A	B	C
2	1.50	6.00	3.60
3	3.00	7.50	5.10
4	4.50	9.00	6.60
5	6.00	10.50	8.10
6	7.50	12.00	9.60
7	9.00	13.50	11.10
8	10.50	15.00	12.60
9	12.00	16.50	14.10
10	13.50	18.00	15.60
11	15.00	19.50	17.10
12	16.50	21.00	18.60
13	18.00	22.50	20.10
14	19.50	24.00	21.60
15	21.00	25.50	23.10

2017/04/12

TOLERANCE	
.0	±0.30
.00	±0.20
.000	±0.10
ANGLE	
0°	±1°
.0°	±
SHEET	
1/1	

Singatron Enterprise Co., Ltd.			
TITLE	1.50mm SMT Series Wire to Board Connector Wafer		
DWN	Tom Lee	PART NO. 2WB1174V-XX(XX)XX XX	
CHKD	Erin Chou	SCALE 1:1	UNIT: mm
APVD	Tom Lee	SIZE: A3	SHEET: 1 OF 1 REV: a
CUSTOMER COPY			

1 2 3 4 5 6 7 8