

1 2 3 4 5 6 7 8

F

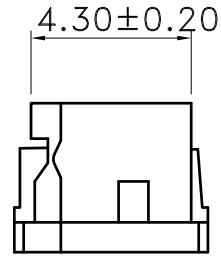
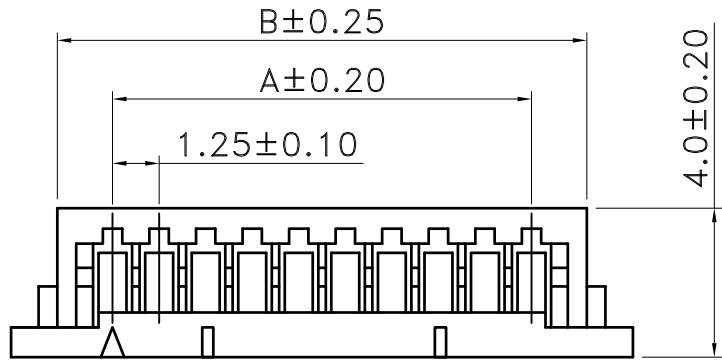
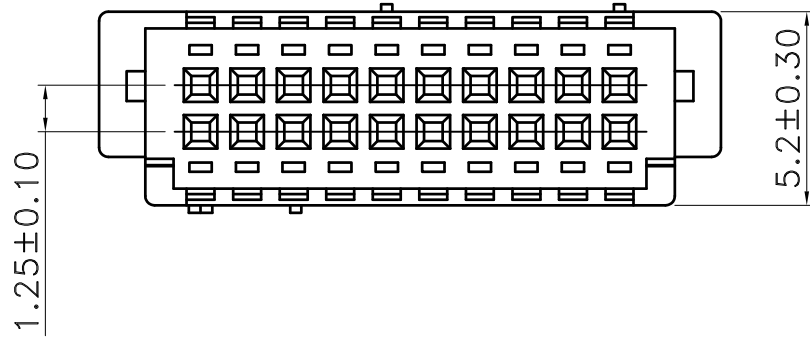
E

D

C

B

A



SPECIFICATIONS

- . Voltage Rating : 150V AC/DC
- . Current Rating : 1A AC/DC
- . Withstanding Voltage : 500V AC/minute
- . Insulation Resistance ; 1000MΩ min
- . Temperature Range : -25°C to +85°C
- . Contact Resistance : 20mΩ max

HOUSING

- . Part No. : 2WB1255-XX
- . Poles : 2x5~2x25
- . Material : Nylon66 UL94V-0
- . Q'ty : 1,000 pcs/Bag

POLES	PART NO.	DIMENSIONS	
		A	B
10	2WB1255-2x05	5.00	8.00
20	2WB1255-2x10	11.25	14.25
30	2WB1255-2x15	17.50	20.50
40	2WB1255-2x20	23.75	26.75

TOLERANCE		Singatron Enterprise Co., Ltd.			
.0	±0.30	TITLE	1.25mm Crimp Style Connector		
.00	±0.20		DWN	吳弘文	PART NO. 2WB1255-XX
.000	±0.10		CHKD	周慈雲	SCALE 1:1 UNIT: mm
ANGLE		APVD	張育瑞	SIZE: A3 SHEET: 1 OF 1	REV: d
0°	±1°	CUSTOMER COPY			
.0°	±				
SHEET	1/1				

1 2 3 4 5 6 7 8