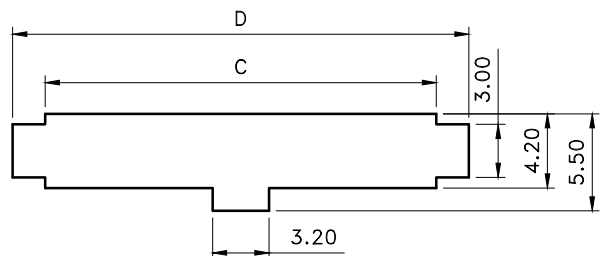
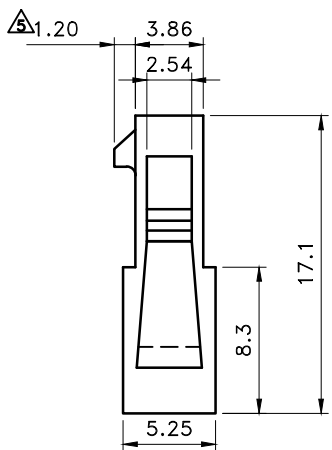
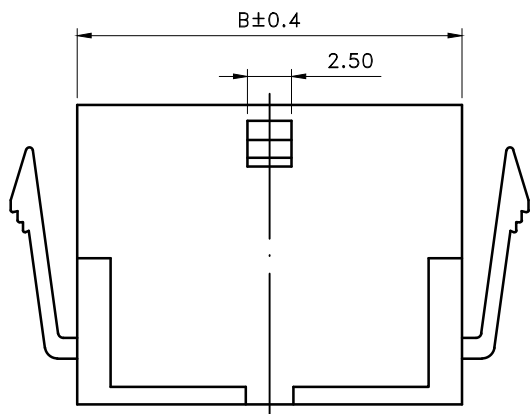
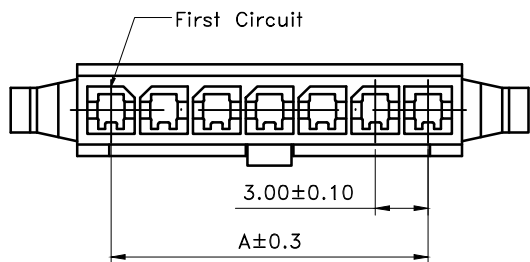


1 2 3 4 5 6 7 8



Recommend Panel cut-out  
General Tolerance  $\pm 0.05$



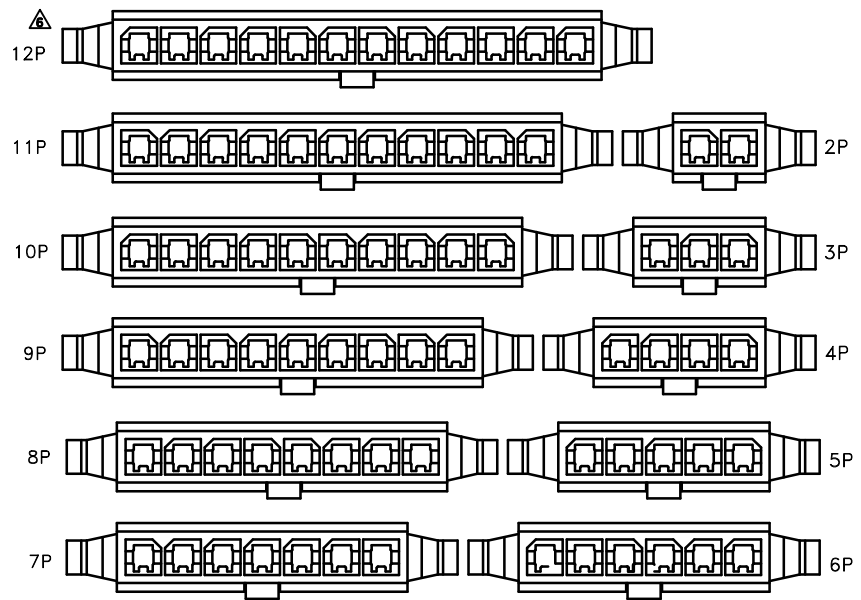
Poles	Dimensions (mm)			
	A	B	C	D
2	3.00	6.85	7.20	10.90
3	6.00	9.85	10.20	13.90
4	9.00	12.85	13.20	16.90
5	12.00	15.85	16.20	19.90
6	15.00	18.85	19.20	22.90
7	18.00	21.85	22.20	25.90
8	21.00	24.85	25.20	28.90
9	24.00	27.85	28.20	31.90
10	27.00	30.85	31.20	34.90
11	30.00	33.85	34.20	37.90
12	33.00	36.85	37.20	40.90

**SPECIFICATIONS**

- Current rating : 5A AC/DC
- Withstanding voltage : 1,500V AC/minute
- Insulation resistance : 1,000M  $\Omega$  min. initial
- Temperature range : -40°C~+105°C
- Contact resistance : 20m  $\Omega$  max.

**PLUG HOUSING**

- Part No. : 2WB3024S-XX
- Poles : 2-12(Single Row, with Ear)
- Material : Nylon 66 UL 94V-0
- Q' ty : 1000 pcs./Bag



TOLERANCE	LTR	REVISION RECORD	NAME	DATE
.0	$\pm 0.30$	$\triangle$ RoHS compliant	余秀麗	06/06/22
.00	$\pm 0.20$	$\triangle$ 200804-017	黃科源	08/04/21
.000	$\pm 0.10$	$\triangle$ 200806-023	黃科源	08/06/17
ANGLE		$\triangle$ 200810-009	黃科源	08/10/22
0°	$\pm 1°$	$\triangle$ 環境溫度變更-40°C to +105°C	劉怡萱	11/02/09
.0°	$\pm$	$\triangle$ 蜂槽圖面少耳朵	劉怡萱	11/03/25
SHEET	1/1	$\triangle$ 依ECR-00000160修改產品敘述	李柏昇	16/08/02

Singatron Enterprise Co., Ltd.

TITLE	3.00mm Single-Row Wire to Wire Power Connector Series.			
DWN	李柏昇	PART NO. 2WB3024S-XX		
CHKD	簡鴻彬	SCALE 1:1	UNIT: mm	
APVD	張育瑞	SIZE: A3	SHEET: 1 OF 1	REV: a7
CUSTOMER COPY				

1 2 3 4 5 6 7 8