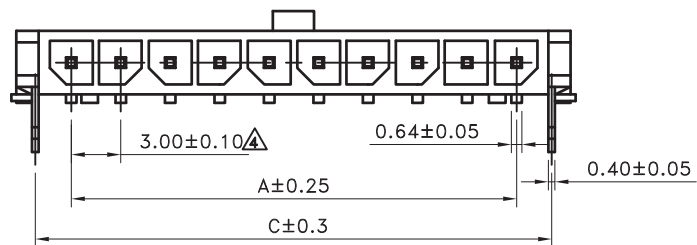
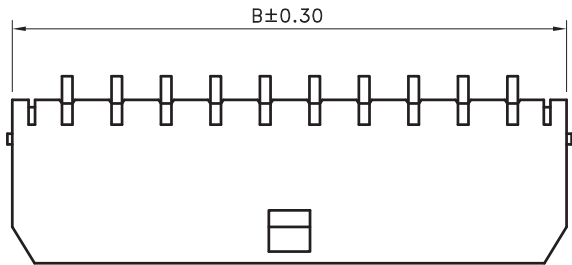
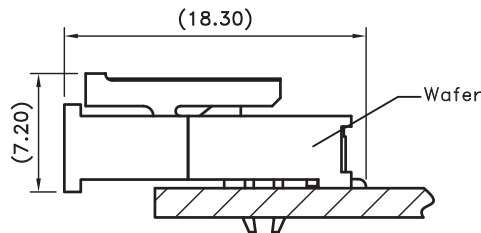


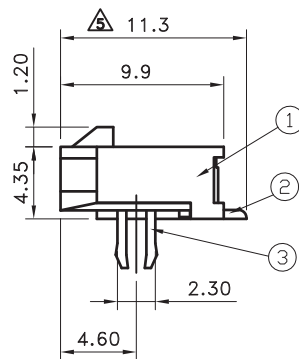
Recommended PCB Layout



Poles	Dimensions(mm)			Poles	Dimensions(mm)		
	A	B	C		A	B	C
2	3.00	9.70	7.30	8	21.00	27.70	25.30
3	6.00	12.70	10.30	9	24.00	30.70	28.30
4	9.00	15.70	13.30	10	27.00	33.70	31.30
5	12.00	18.70	16.30	11	30.00	36.70	34.30
6	15.00	21.70	19.30	12	33.00	39.70	37.30
7	18.00	24.70	22.30				



Assembly state

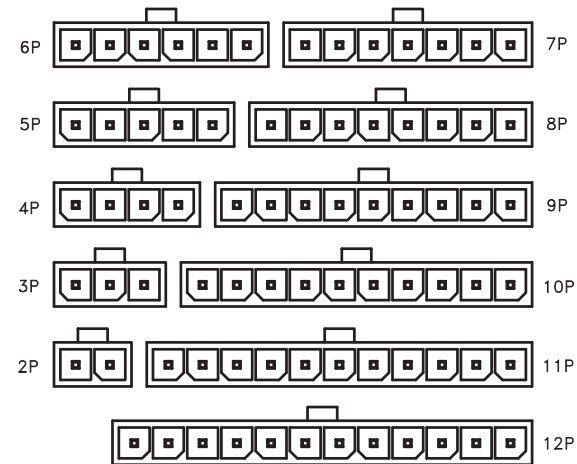


■ SPECIFICATIONS

- Current Rating : 5A AC/DC
- Withstanding Voltage : 1,500V AC/minute
- Insulation Resistance : 1,000MΩ min.
- Temperature Range : -40°C ~ +105°C
- Contact Resistance : 20mΩ max.

■ WAFER

- Part No. : 2WB3029SH-XX
- Poles : 2 - 12 (With Mount Clips)
- Material : 1.Base : LCP, UL 94V-0
2.Contacts : Brass
3.Clip:Brass
- Finish : 100u"Min Tin-Lead Plating.
50u"Min Nickel Under Plating.



TOLERANCE	LTR	REVISION RECORD	NAME	DATE
.0	±0.30	▲ 200707-009	黃科源	07/07/08
.00	±0.20	▲ 200802-011	黃科源	08/02/19
.000	±0.10	▲ 200810-012	黃科源	08/10/30
ANGLE		▲ 環境溫度變更-40°C to +105°C	劉怡萱	11/01/31
0°	±1°	▲ 尺寸變更	吳弘文	2013/02/20
.0°	±			
SHEET	1/1			

UNLESS OTHERWISE SPECIFIED TOLERANCES

DECIMALS: X :±0.5 X.X :±0.3 X.XX :±0.2
 ANGLES: X :±2° X.X :±1°

Singatron Enterprise Co., Ltd.

TITLE 3.00mm SMI (Micro-Hi ; Single-Row) Wire to Board Power Connector Series

DWN 吳弘文 PART NO. 2WB3029SH-XX

CHKD 黃科源 SCALE 1:1 UNIT: mm

APVD 張育瑞 SIZE: A3 SHEET: 1 OF 1 REV: a4

CUSTOMER COPY