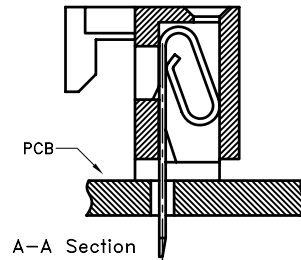
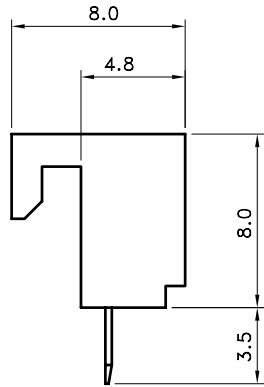
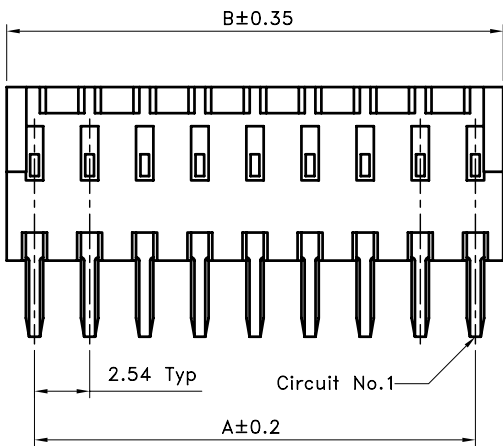
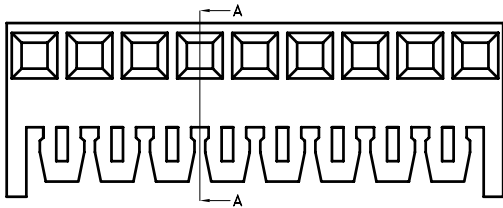


Recommend PCB Layout



■ SPECIFICATIONS

- Voltage Rating : 250V AC/DC
- Current Rating : 2.5A AC/DC
- Withstanding Voltage : 1000V AC/minute
- Insulation Resistance : 1000MΩ min
- Temperature Range : - 40°C to + 105°C
- Contact Resistance : 20mΩ max

■ WAFER

- Part No. : 2WB5005A-XXS
- PolesN : 2-30(Top Entry Type)
- Material : Contact : Brass. Tin Plated
Base : Nylon 66 UL94V-2
- Q' ty : 1000pcs./PVC Box

Poles	Part No.	Dimension(mm)	
		A	B
2	2WB5005A-02S	2.54	5.10
3	2WB5005A-03S	5.08	7.64
4	2WB5005A-04S	7.62	10.18
5	2WB5005A-05S	10.16	12.72
6	2WB5005A-06S	12.70	15.26
7	2WB5005A-07S	15.24	17.80
8	2WB5005A-08S	17.78	20.34
9	2WB5005A-09S	20.32	22.88
10	2WB5005A-10S	22.86	25.42
11	2WB5005A-11S	25.40	27.96
12	2WB5005A-12S	27.94	30.50
13	2WB5005A-13S	30.48	33.04
14	2WB5005A-14S	33.02	35.58
15	2WB5005A-15S	35.56	38.12
16	2WB5005A-16S	38.10	40.66
17	2WB5005A-17S	40.64	43.20
18	2WB5005A-18S	43.18	45.74
19	2WB5005A-19S	45.72	48.28
20	2WB5005A-20S	48.26	50.82
21	2WB5005A-21S	50.80	53.36
22	2WB5005A-22S	53.34	55.90
23	2WB5005A-23S	55.88	58.44
24	2WB5005A-24S	58.42	60.98
25	2WB5005A-25S	60.96	63.52
26	2WB5005A-26S	63.50	66.06
27	2WB5005A-27S	66.04	68.60
28	2WB5005A-28S	68.58	71.14
29	2WB5005A-29S	71.12	73.68
30	2WB5005A-30S	73.66	76.22

TOLERANCE	LTR	REVISION RECORD	DATE	LTR	REVISION RECORD	DATE
.0	±0.3	ECR	RoHS compliant	06/04/01		
.00	±0.2	ECR	200803-012	08/03/11		
.000	±0.1					
ALL	±					
ANGLE						
0°	±					
.0°	±					

Singatron Enterprise Co., Ltd.				
TITLE	2.54mm Top Entry Type Wafer			
DWN	黄科源	PART NO.	2WB5005A-XXS	
CHKD	林宗	SCALE 1:1	UNIT: mm	☉ ↻
APVD	林宗	SIZE: A3	SHEET: 1 OF 1	REV: a2
CUSTOMER COPY				

Conforms to The RoHS Instruction