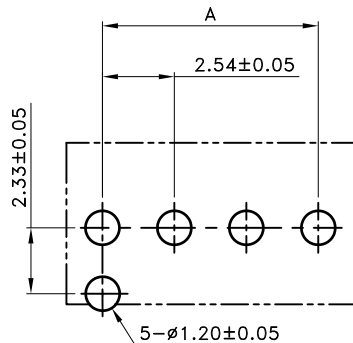
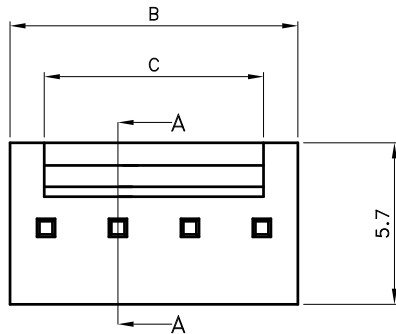
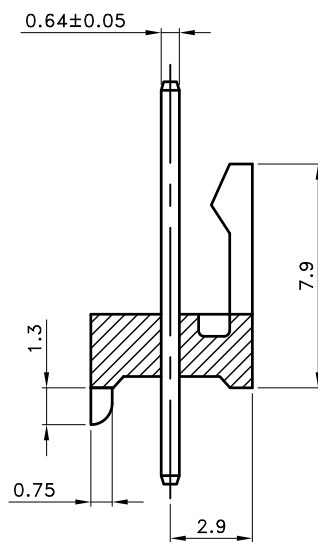
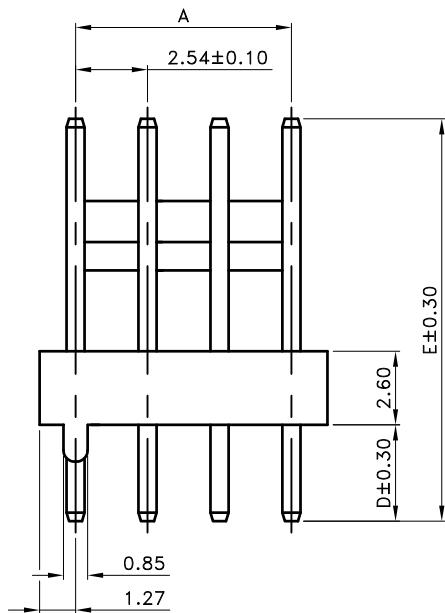


1 2 3 4 5 6 7 8



Recommad PCB Layout



Section A-A

Poles	Dimension(mm)		
	A	B	C
03	5.08	7.62	5.10
04	7.62	10.16	7.74

■ SPECIFICATIONS

- Current Rating : 3A AC/DC
- Withstanding Voltage : 1,000V AC/minute
- Insulation Resistance : 1,000MΩ min
- Temperature Range : - 25°C to + 85°C
- Contact Resistance : 20mΩ max.

■ WAFER

- Part No. : 2WB6255-XXX(XXXX)XXXX
① ② ③ ④ ⑤ ⑥

Ordering Code

- ① Poles No. : 03, 04
- ② Plated
Blank : Sn>120μ" ; Ni>30μ"
5 : Sn>100μ" ; Ni>50μ"

③ DIP Length

Code	Dimension(mm)	
	D	E
Blank	3.4	14.2
S	3.2	13.2
S1	3.0	12.9
S2	2.9	12.6
S3	3.5	13.5

④ Base Mateial :

- Blank : Nylon 66 UL94V-0
- GF : Nylon66 + 15% Glass Fiber UL94V-0

⑤ Halogen

- Blank : W/ Halogen
- NH : No Halogen

⑥ Color

- Blank : Nature
- R : Red
- R2 : Red(188C)

• Material :

- 1. Contact : Brass, Tin Plated
- 2. Base : Refer the above options

TOLERANCE	LTR	REVISION RECORD	NAME	DATE	LTR	REVISION RECORD	NAME	DATE
.0	±0.30	①	變更原因遺失	余秀麗	2005/05/15	①		
.00	±0.20	②	新增產品顏色	王誠賢	2012/01/10	②		
.000	±0.10	③				③		
ANGLE		④				④		
0°	±1°	⑤				⑤		
.0°	±	⑥				⑥		
SHEET	1/1	⑦				⑦		

Singatron Enterprise Co., Ltd.

TITLE	2.54mm WIRE TO BOARD CONN, STRAIGHT & DIP TYPE			
DWN	王誠賢	PART NO.	2WB6255-XXX(XXXX)XXXX	
CHKD	黃科源	SCALE	1:1	UNIT: mm
APVD	張育瑞	SIZE:	A3	SHEET: 1 OF 1 REV: a2

CUSTOMER

Conforms to The RoHS Instruction

CUSTOMER COPY

1 2 3 4 5 6 7 8