

## Specifications

### Electrical

- Voltage Rating: 100V(AC)
- Current Rating: 2A
- Contact Resistance: 20mΩ max.
- Dielectric Withstandeing Voltage:800V AC/1min.
- Insulation Resistance: 1000mΩ min

### Material

- Insulator: Nylon 66 UL94V-0
- Color: White or Natural
- Contact: Brass 0.50mm(0.20")Square Pin
- Plating: Tin or Gold Plated
- Temperature Range: -25°C~+85°C
- Applicable PC Board Thickness: 0.8 to 1.6mm

PIN數	DIM.A	DIM.B
02	2.0	6.1
03	4.0	8.1
04	6.0	10.1
05	8.0	12.1
06	10.0	14.1
07	12.0	16.1
08	14.0	18.1
09	16.0	20.1
10	18.0	22.1
11	20.0	24.1
12	22.0	26.1
13	24.0	28.1
14	26.0	30.1
15	28.0	32.1
16	30.0	34.1

PIN針、端子電鍍表	
電鍍代號	電鍍說明
T	錫
G1	一般金
S5	接觸面:鍍5u"金 其餘部分鍍錫
S10	接觸面:鍍10u"金 其餘部分鍍錫
S15	接觸面:鍍15u"金 其餘部分鍍錫
S30	接觸面:鍍30u"金 其餘部分鍍錫

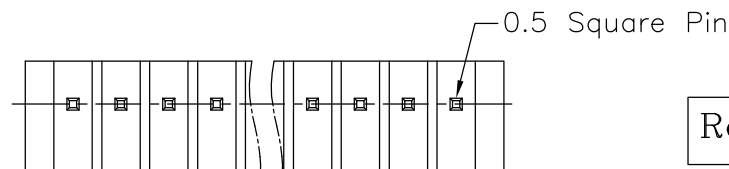
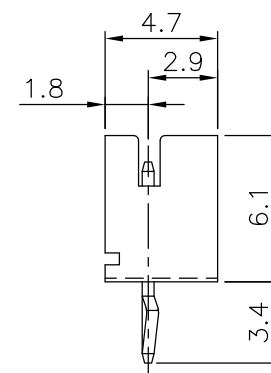
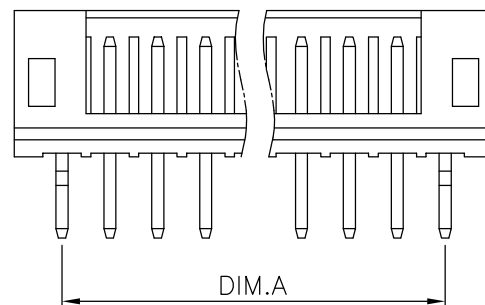
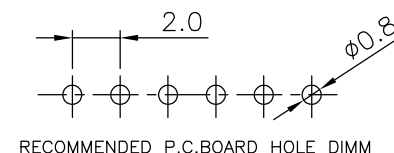
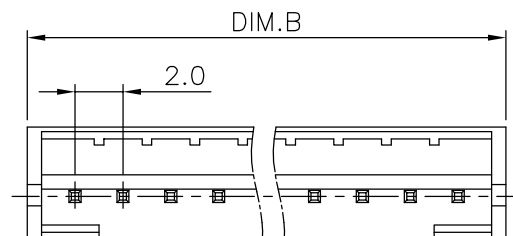
### Ordering Information

Series No.	No. of Contacts	Contact Type	Contact Plating	
2WB6600	06P	S	T	PB
2WB6600	02P ~ 20P	S: Straight	T: Tin G1: Gold Flash G5: 5u" Gold G10: 10u" Gold G15: 15u" Gold G30: 30u" Gold [G: Full Gold]	RoHs

### General Tolerances (unless specified)

Cable use only	5~500 ±5mm 500~1000 ±10mm 1000~1500 ±15mm 1500~2000 ±20mm	X.X ±0.20 X.XX ±0.10 X.XXX ±0.05 Angle X ± 2° X.X ± 1°
----------------	--	---

版本	2.0	ECR編號	0609005	修改內容	17/0% <sub>5</sub> :更新尺寸表改與圖面相符
版本	1.1	ECR編號	9709011	修改內容	08/0% <sub>6</sub> :DIM.A&DIM.B修改



RoHS compliant

### Singatron Enterprise Co., Ltd.

TITLE	.079" (2.00mm) Center Wafer Assembly			
DWN	Alice	PART NO.	2WB6600-xxPSx-PB	
CHKD		SCALE	1:1	UNIT: mm
APVD		SIZE:	A3	SHEET:1 OF 1
CUSTOMER COPY				