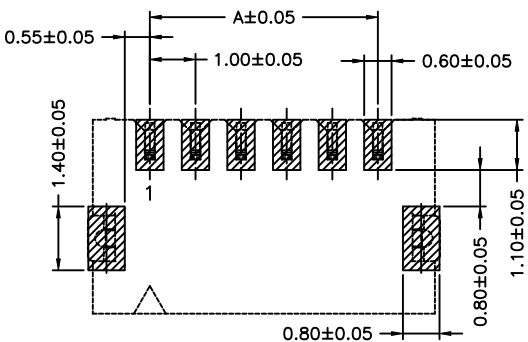


(TOP VIEW)



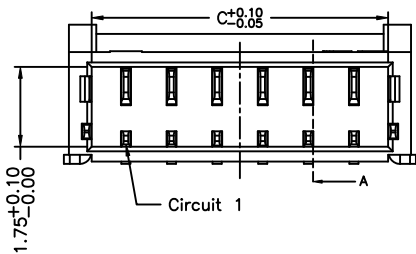
P.C.B. LAYOUT (TOP VIEW)

P/N LEGEND

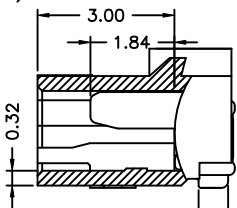
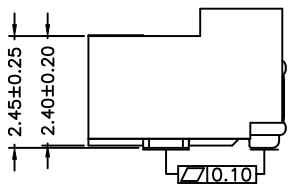
①	Series No.
②	Connector type: WR=Right angle A Type
③	Mounting type: S=SMT without boss
④	No. of circuits
⑤	N=Halogen Free
⑥	Material: L=LCP
⑦	Color: N=Natural; B=Black
⑧	Plating code for contacts: T1=Matte Tin-plated; G1=Gold-flash
⑨	Plating code for solder tabs: T=Matte Tin-plated; G=Gold-flash
⑩	Option code: 00=Standard
⑪	Packing code: R=Tape & Reel(Without Cap or Mylar)

SPECIFICATIONS

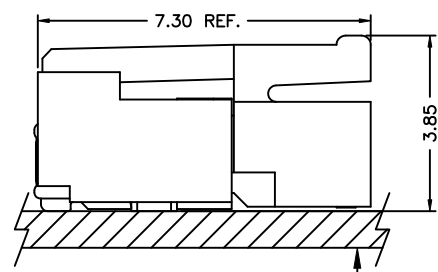
Current Rating: 1A AC,DC
 Voltage Rating: 125V AC,DC
 Temperature Range: -25°C ~ +85°C
 Contact Resistance: 20mΩ Max.
 Insulation Resistance: 100MΩ Min.
 Withstanding Voltage: 500V AC/minute
 Pin Material: Phosphor Bronze/Tin-plated
 Solder Tabs: Brass/Matte Tin-plated
 Wafer: LCP,UL94V-0
 Color: Natural or Black



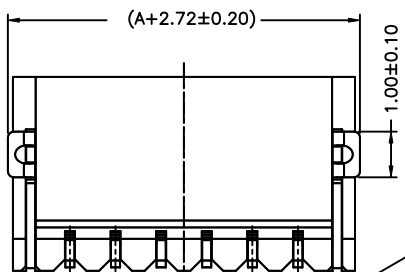
Circuit 1



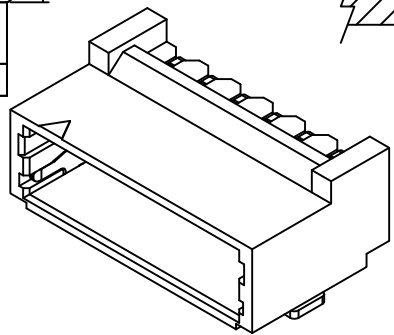
SEC:A-A



MATED CONDITION



Circuit No.	Dimensions			Circuit No.	Dimensions		
	A	B	C		A	B	C
02P	1.00	3.50	2.50	12P	11.00	13.50	12.50
03P	2.00	4.50	3.50	13P	12.00	14.50	13.50
04P	3.00	5.50	4.50	14P	13.00	15.50	14.50
05P	4.00	6.50	5.50	15P	14.00	16.50	15.50
06P	5.00	7.50	6.50	16P	15.00	17.50	16.50
07P	6.00	8.50	7.50	17P	16.00	18.50	17.50
08P	7.00	9.50	8.50	18P	17.00	19.50	18.50
09P	8.00	10.50	9.50	19P	18.00	20.50	19.50
10P	9.00	11.50	10.50	20P	19.00	21.50	20.50
11P	10.00	12.50	11.50				



A3	EN1606120004	2016.06.12	劉建芳	GENERAL TOLERANCE	ANGLE±
A2	EN1409050002	2014.09.24	唐騰鳳		
A1	EN1203070048	2012.03.20	陳敏		
A0	NEW RELEASE	2011.04.12	陳敏		
REV.	DESCRIPTION	DATE	NAME	X.X±0.25	▽
				X.XX±0.15	◎
				X.XXX±0.05	◎

Singatron Enterprise Co., Ltd.			
TITLE	1.00mm PITCH 90° WAFER-SMT TYPE,		
DWN	陳敏2011.04.12	PART NO.	2WBA1024WRA-S-XPNLNXX00R
CHKD		SCALE 1:1	UNIT: mm
APVD	陳敏-2011.04.12	SIZE: A3	SHEET:1 OF 1 REV: A3
CUSTOMER COPY			