

Ordering Information:

2WBA2100WV-XP * $\frac{1}{2}$

1. Part No.

2. Style:

1 - Type 1

2 - Type 2

3 - Type 3

SPECIFICATIONS

Current Rating: 3A AC,DC

Voltage Rating: 300V AC,DC

Temperature Range: -25°C ~ +85°C

Contact Resistance: 20mΩ Max

Insulation Resistance: 100MΩ Min

Withstanding Voltage: 1000V AC/minute

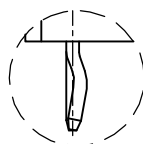
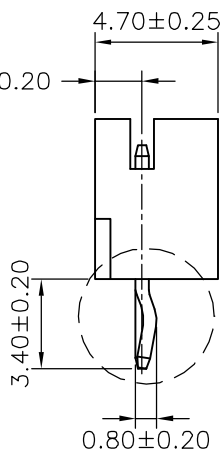
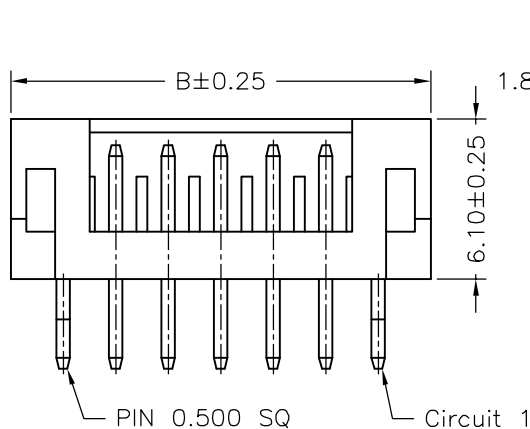
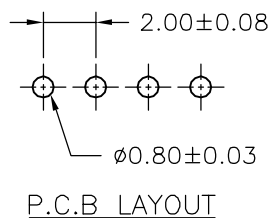
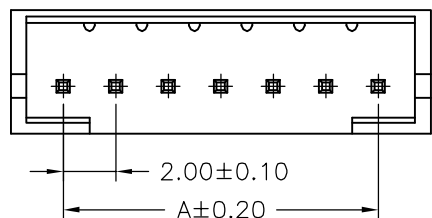
Pin Material: Brass/Tin-plated

Material: Nylon 66,UL94V-0

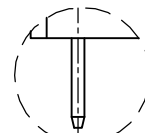
Pantone Color: 153C~154C

Ordering Information & Dimensions

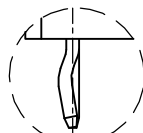
PART NO.	Dimensions	
	A	B
2WBA2100WV-02P	2.00	6.00
2WBA2100WV-03P	4.00	8.00
2WBA2100WV-04P	6.00	10.00
2WBA2100WV-05P	8.00	12.00
2WBA2100WV-06P	10.00	14.00
2WBA2100WV-07P	12.00	16.00
2WBA2100WV-08P	14.00	18.00
2WBA2100WV-09P	16.00	20.00
2WBA2100WV-10P	18.00	22.00
2WBA2100WV-11P	20.00	24.00
2WBA2100WV-12P	22.00	26.00
2WBA2100WV-13P	24.00	28.00
2WBA2100WV-14P	26.00	30.00
2WBA2100WV-15P	28.00	32.00



TYPE 1



TYPE 3



TYPE 2

Singatron Enterprise Co., Ltd.

TITLE	2.00mm PITCH 180° WAFER			
DWN	董正一	PART NO.	2WBA2100WV-XPX	
CHKD	2001.02.01	SCALE	1:1	UNIT: mm
APVD	董正一	SIZE: A3	SHEET: 1 OF 1	REV: B1

REV.	DESCRIPTION	DATE	GENERAL TOLERANCE	
B1	REVISE	2009.04.23	X. X±0.25	ANGLE±
B0	NEW RELEASE	2006.01.07	X. XX±0.15	
			X. XXX±0.05	

CUSTOMER COPY