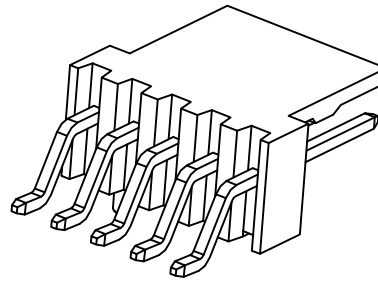
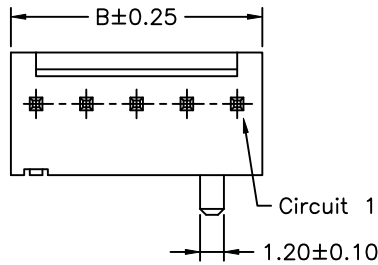




FOR REFERENCE ONLY



P/N LEGEND

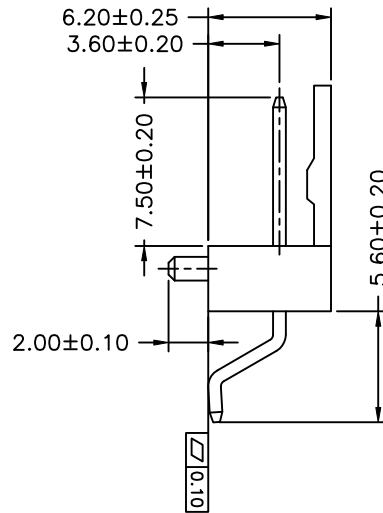
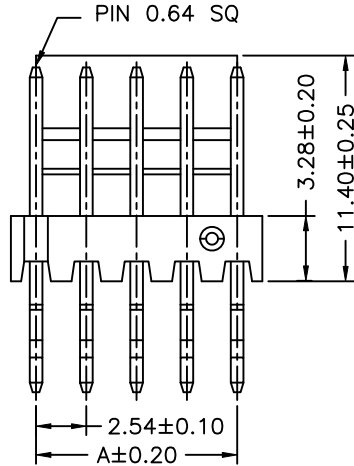
2WBA2542 WR-SF-XP N L N T1 N 00 R

① ② ③ ④ ⑤ ⑥ ⑦ ⑧ ⑨ ⑩ ⑪

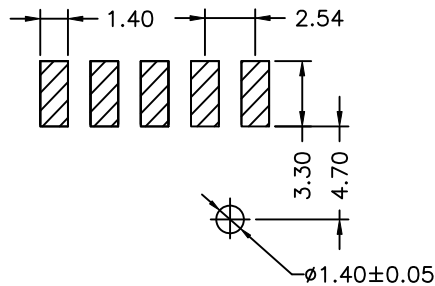
- ① Series No.
- ② Connector type: WR=Right angle
- ③ Mounting type: SF=SMT with boss
- ④ No. of circuits
- ⑤ N=Halogen Free
- ⑥ Material: L=LCP
- ⑦ Color: N=Natural
- ⑧ Plating code for contacts: T1=Matte Tin-plated
- ⑨ Plating code for solder tabs: N=Non-plating
- ⑩ Option code: 00=Standard
- ⑪ Packing code: R=Tape & Reel(Without Cap)

SPECIFICATIONS

Current Rating: 4A AC,DC
 Voltage Rating: 250V AC,DC
 Temperature Range: -25°C ~ +85°C
 Contact Resistance: 10mΩ Max
 Insulation Resistance: 1000MΩ Min
 Withstanding Voltage: 1000V AC/minute



Circuit No.	Dimensions		Circuit No.	Dimensions	
	A	B		A	B
02P	2.54	5.08	12P	27.94	30.48
03P	5.08	7.62	13P	30.48	33.02
04P	7.62	10.16	14P	33.02	35.56
05P	10.16	12.70	15P	35.56	38.10
06P	12.70	15.24	16P	38.10	40.64
07P	15.24	17.78	17P	40.64	43.18
08P	17.78	20.32	18P	43.18	45.72
09P	20.32	22.86	19P	45.72	48.26
10P	22.86	25.40	20P	48.26	50.80
11P	25.40	27.94			



P.C.B LAYOUT

REV.	DESCRIPTION	DATE	NAME	GENERAL TOLERANCE	ANGLE±
X0	NEW RELEASE	2019.06.14	劉建芳	X.X±0.25	▽
				X.XX±0.15	⊕
				X.XXX±0.05	⊗

Singatron Enterprise Co., Ltd.					
TITLE	2.54mm PITCH 180° WAFER-SMT TYPE				
DWN	劉建芳	PART NO.	2WBA2542WR-SF-XPNT1N00R		
CHKD	2019.06.14	SCALE	1:1	UNIT:	mm
APVD	謝瑞清	SIZE:	A3	SHEET:	1 OF 1
		REV:	X0		
CUSTOMER COPY					