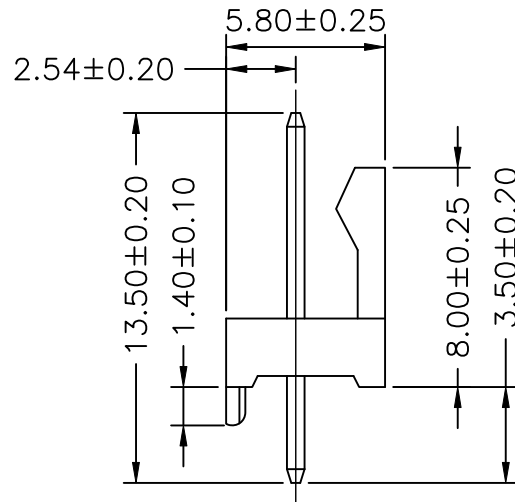
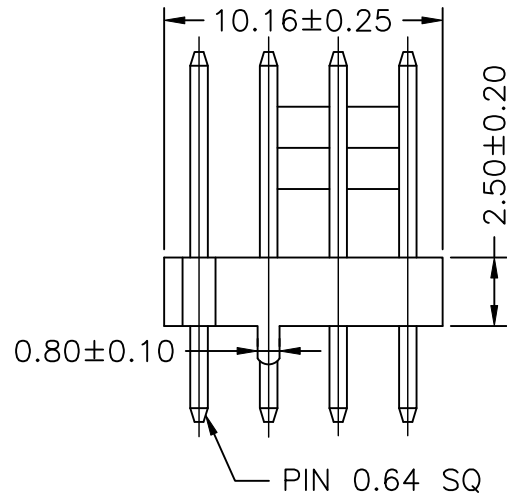


P/N LEGEND

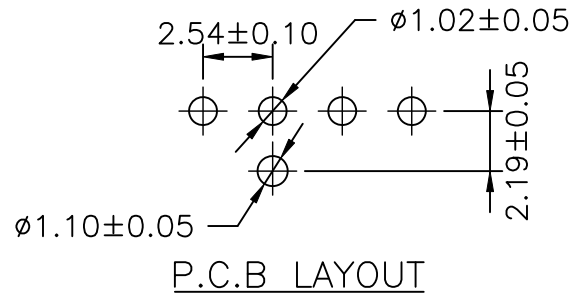
2WBA2542	WVC-F-04P	N	X	X	T1	N	00	G
①	②	③	④	⑤	⑥	⑦	⑧	⑨

① Series No.  
 ② Connector type: WVC=Vertical C type  
 ③ Mounting type: F=With boss  
 ④ No. of circuits  
 ⑤ N=Halogen Free  
 ⑥ Material: 0=Nylon66+GF15%,UL94V-0; L=LCP  
 ⑦ Color: W=White(NY66); N=Natural(LCP); B=Black  
 ⑧ Plating code for contacts: T1=Tin-plated  
 ⑨ Plating code: N=Non-plating  
 ⑩ Option code: 00=Standard  
 ⑪ Packing code: G=Bag



SPECIFICATIONS

Current Rating: 4A AC,DC  
 Voltage Rating: 250V AC,DC  
 Temperature Range: -25°C ~ +85°C  
 Contact Resistance: 10mΩ Max  
 Insulation Resistance: 1000MΩ Min  
 Withstanding Voltage: 1000V AC/minute  
 Pin Material: Brass/ Tin-plated over Nickel



A0B	PRELIMINARY RELEASE	2018.12.05	徐富永	GENERAL TOLERANCE	
A0A	PRELIMINARY RELEASE	2018.11.05	徐富永	X.X±0.25	ANGLE±
A0	NEW RELEASE	2018.10.09	徐富永	X.XX±0.15	
REV.	DESCRIPTION	DATE	NAME	X.XXX±0.05	

Singatron Enterprise Co., Ltd.			
TITLE	2.54mm PITCH 180° WAFER		
DWN	徐富永 2018.10.09	PART NO.	2WBA2542WVC-F-04PNXXXXX00G
CHKD		SCALE	1:1 UNIT: mm
APVD	謝瑞清 2018.10.09	SIZE: A3	SHEET: 1 OF 1 REV: A0B
<b>CUSTOMER COPY</b>			